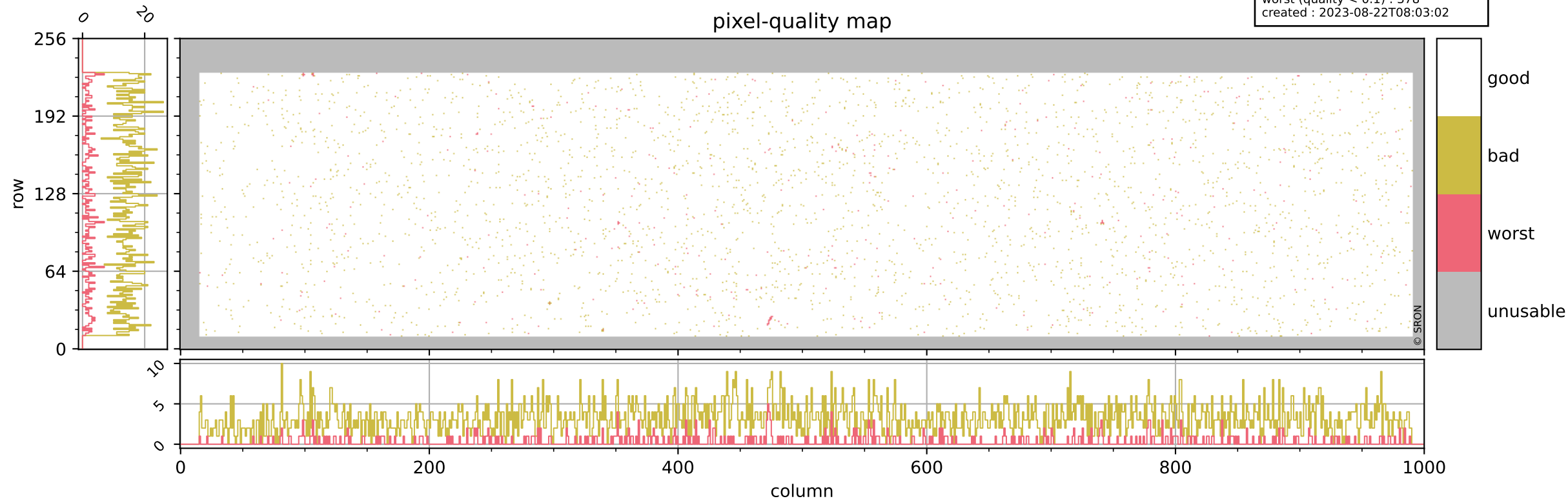


Tropomi SWIR pixel quality (official)

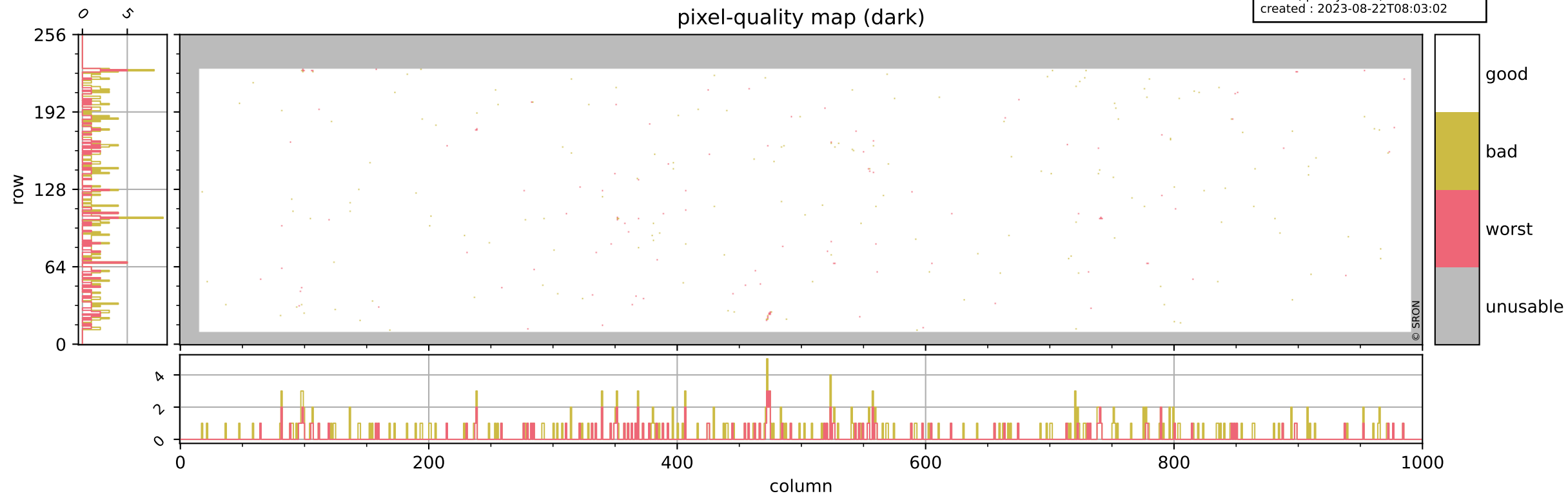
orbits : 20 in [11152, 11197]
coverage : 2019-12-08 / 2019-12-11
bad (quality < 0.8) : 3191
worst (quality < 0.1) : 378
created : 2023-08-22T08:03:02

pixel-quality map



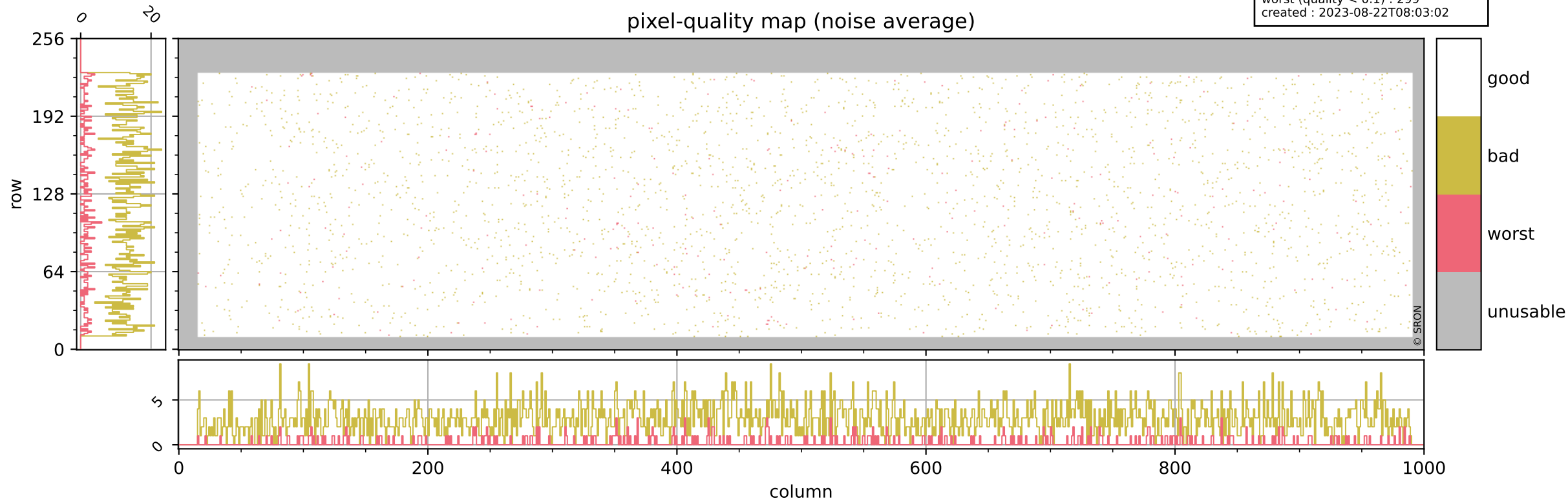
Tropomi SWIR pixel quality (official)

orbits : 20 in [11152, 11197]
coverage : 2019-12-08 / 2019-12-11
bad (quality < 0.8) : 289
worst (quality < 0.1) : 116
created : 2023-08-22T08:03:02



Tropomi SWIR pixel quality (official)

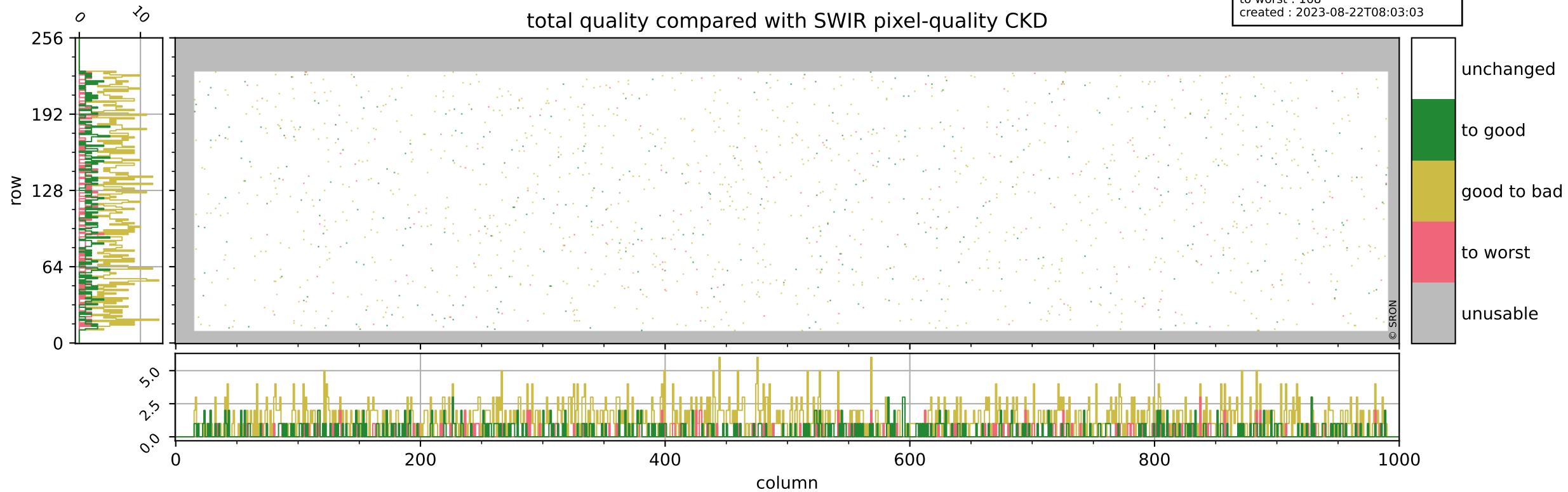
orbits : 20 in [11152, 11197]
coverage : 2019-12-08 / 2019-12-11
bad (quality < 0.8) : 2945
worst (quality < 0.1) : 299
created : 2023-08-22T08:03:02



Tropomi SWIR pixel quality (official)

orbits : 20 in [11152, 11197]
coverage : 2019-12-08 / 2019-12-11
to good : 338
good to bad : 1111
to worst : 168
created : 2023-08-22T08:03:03

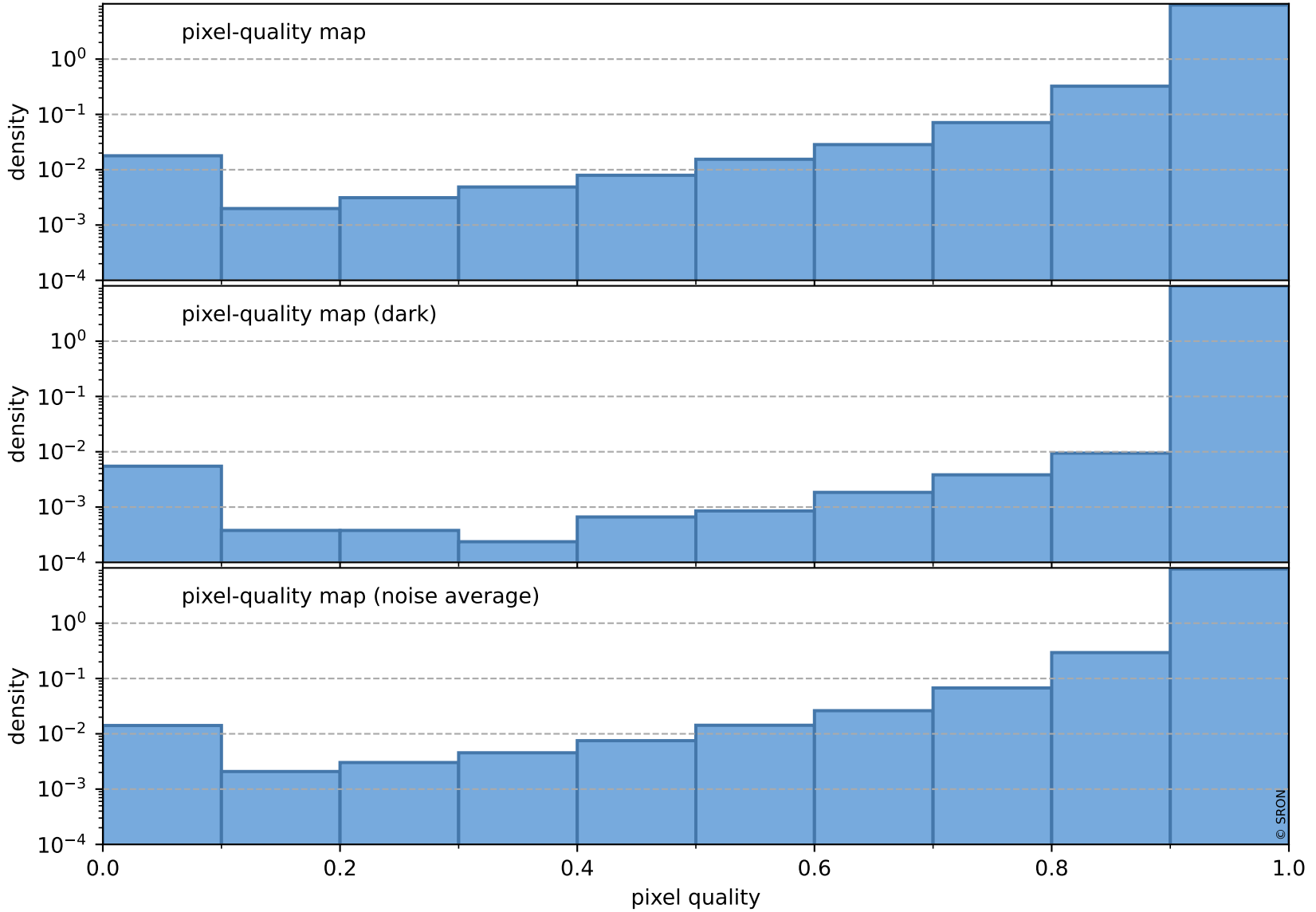
total quality compared with SWIR pixel-quality CKD



Tropomi SWIR pixel quality (official)

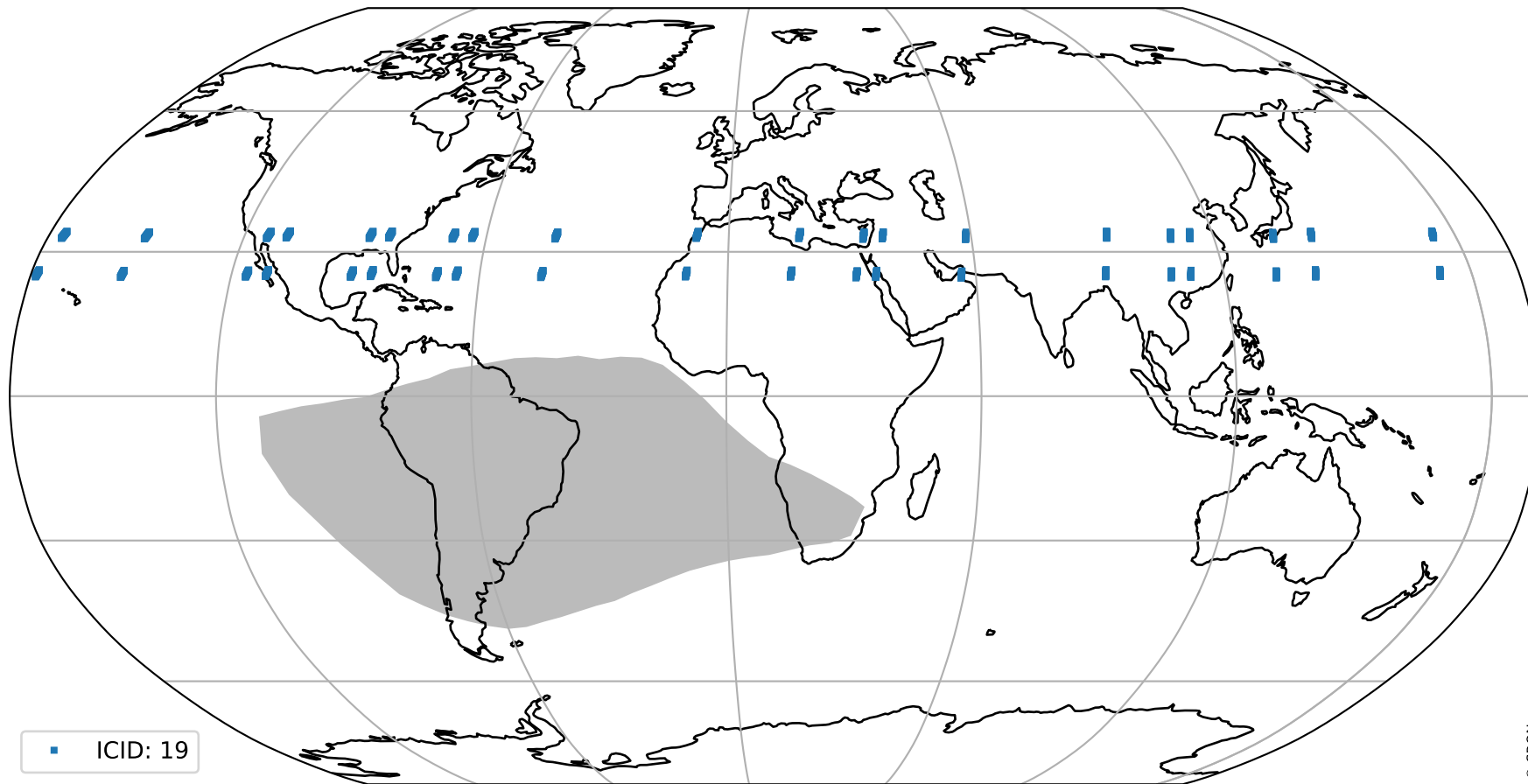
orbits : 20 in [11152, 11197]
coverage : 2019-12-08 / 2019-12-11
created : 2023-08-22T08:03:03

Histograms of pixel-quality



Tropomi SWIR pixel quality (official) ground-tracks of Sentinel-5P

orbits : 20 in [11152, 11197]
coverage : 2019-12-08 / 2019-12-11
created : 2023-08-22T08:03:03



Tropomi SWIR pixel quality (official)

orbits : [2827, 11197]
coverage : 2018-04-30 / 2019-12-11
created : 2023-08-22T08:03:04

trend of pixel quality & temperatures

