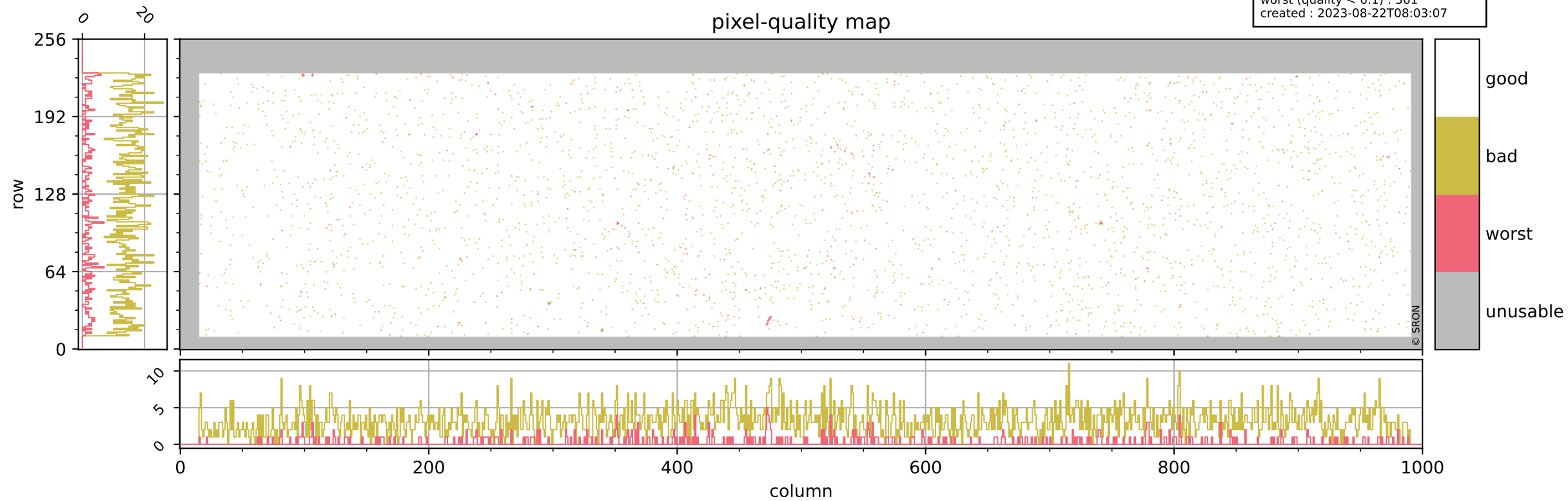


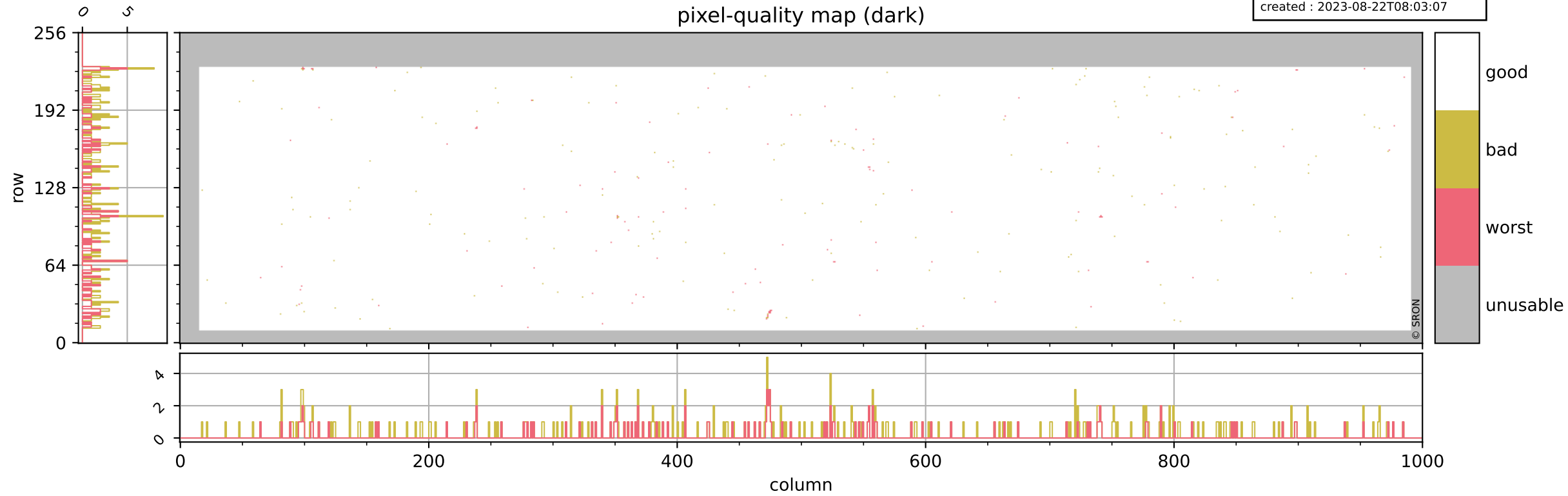
Tropomi SWIR pixel quality (official)

orbits : 20 in [11182, 11227]
coverage : 2019-12-10 / 2019-12-13
bad (quality < 0.8) : 3202
worst (quality < 0.1) : 361
created : 2023-08-22T08:03:07



Tropomi SWIR pixel quality (official)

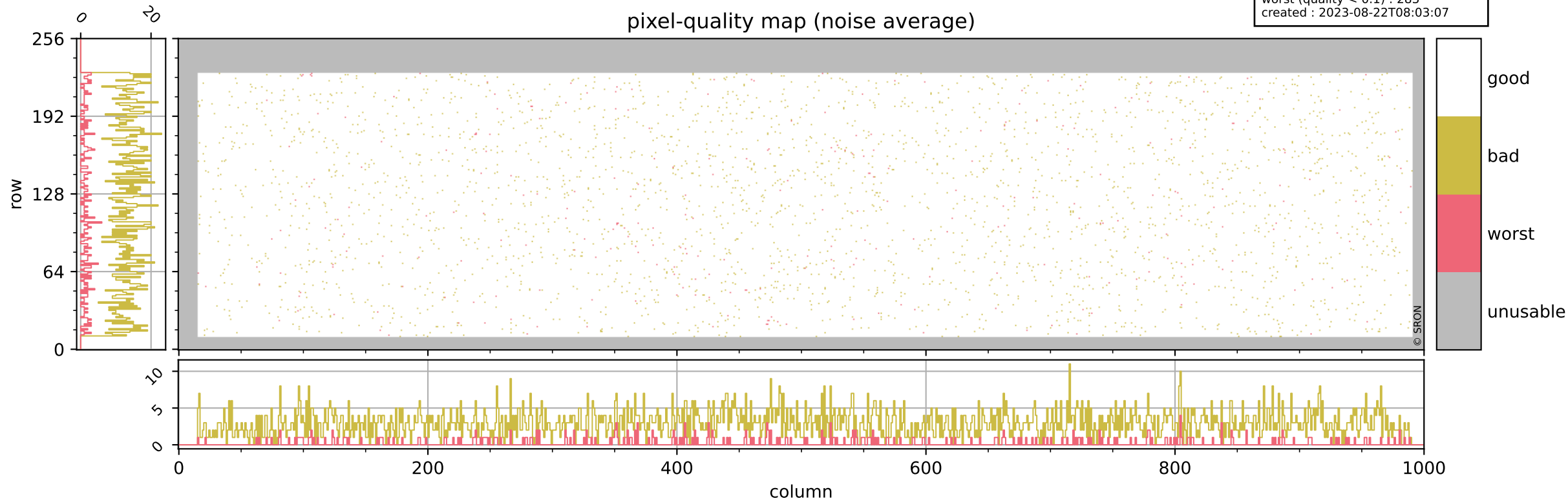
orbits : 20 in [11182, 11227]
coverage : 2019-12-10 / 2019-12-13
bad (quality < 0.8) : 290
worst (quality < 0.1) : 117
created : 2023-08-22T08:03:07



Tropomi SWIR pixel quality (official)

orbits : 20 in [11182, 11227]
coverage : 2019-12-10 / 2019-12-13
bad (quality < 0.8) : 2954
worst (quality < 0.1) : 283
created : 2023-08-22T08:03:07

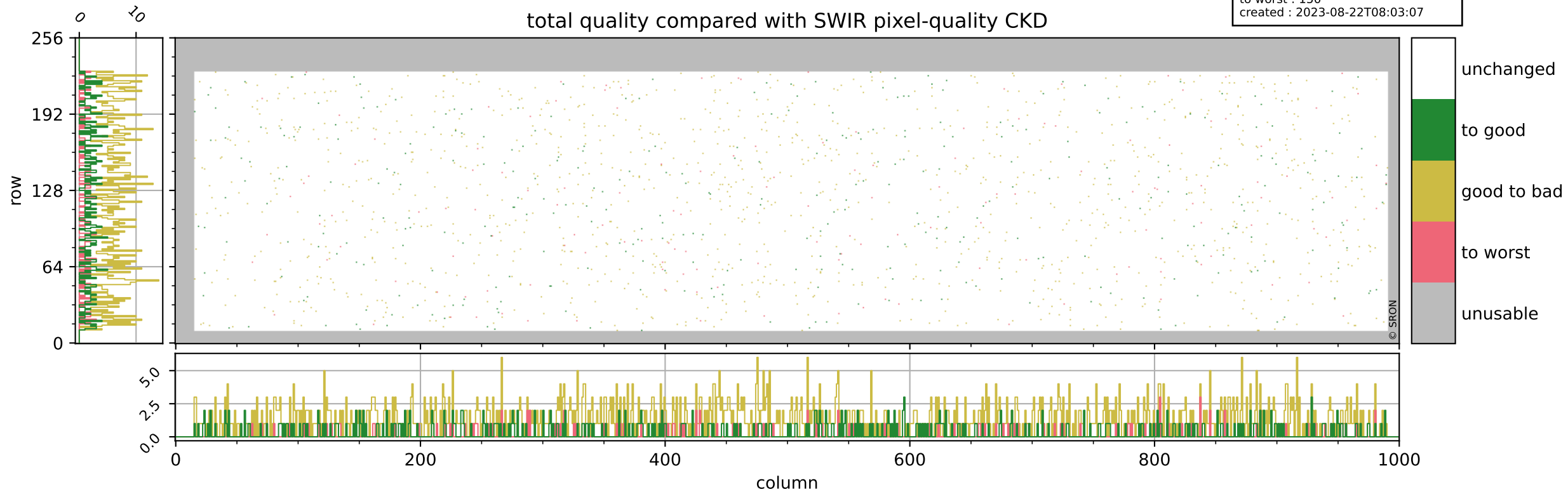
pixel-quality map (noise average)



Tropomi SWIR pixel quality (official)

orbits : 20 in [11182, 11227]
coverage : 2019-12-10 / 2019-12-13
to good : 346
good to bad : 1148
to worst : 150
created : 2023-08-22T08:03:07

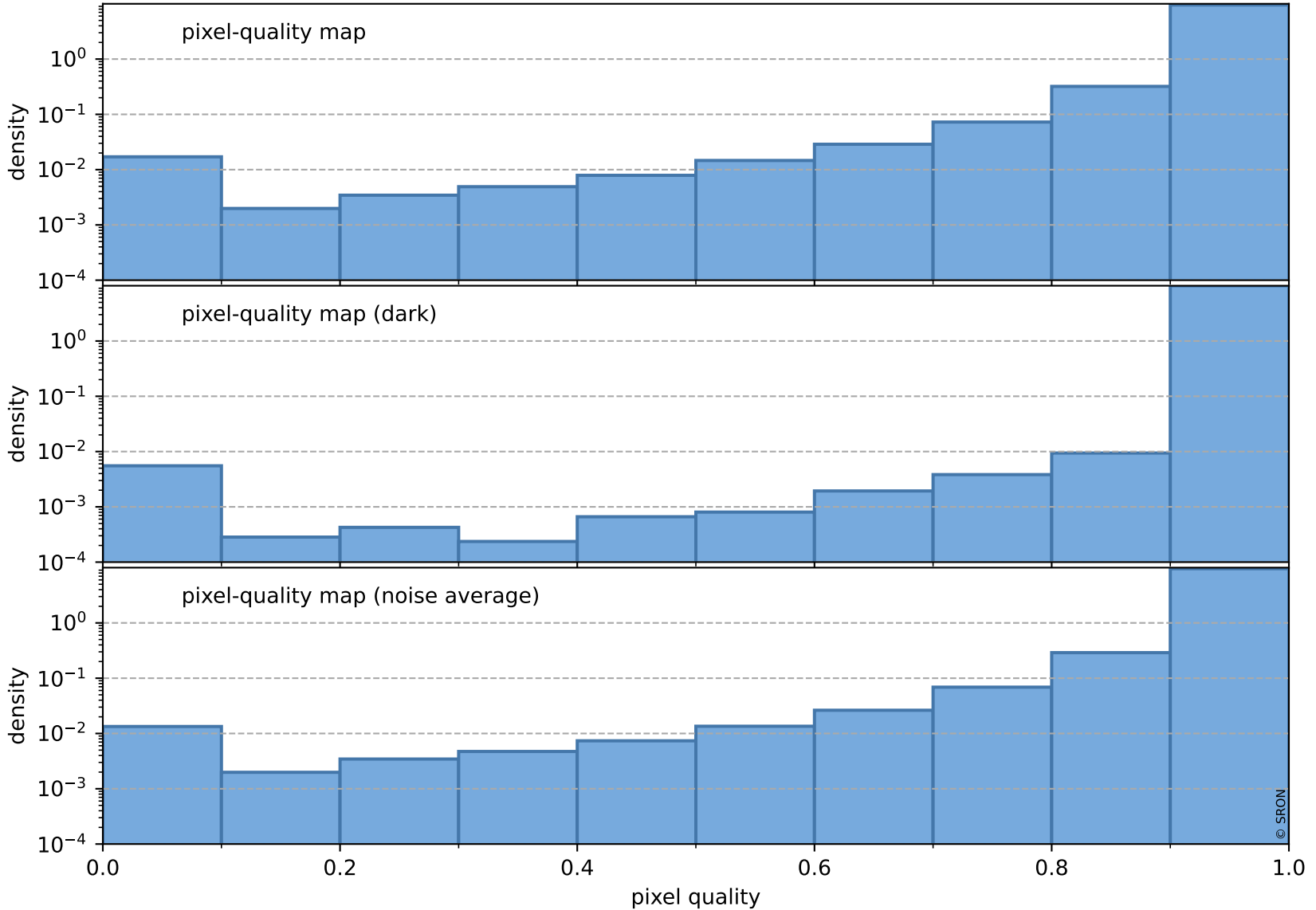
total quality compared with SWIR pixel-quality CKD



Tropomi SWIR pixel quality (official)

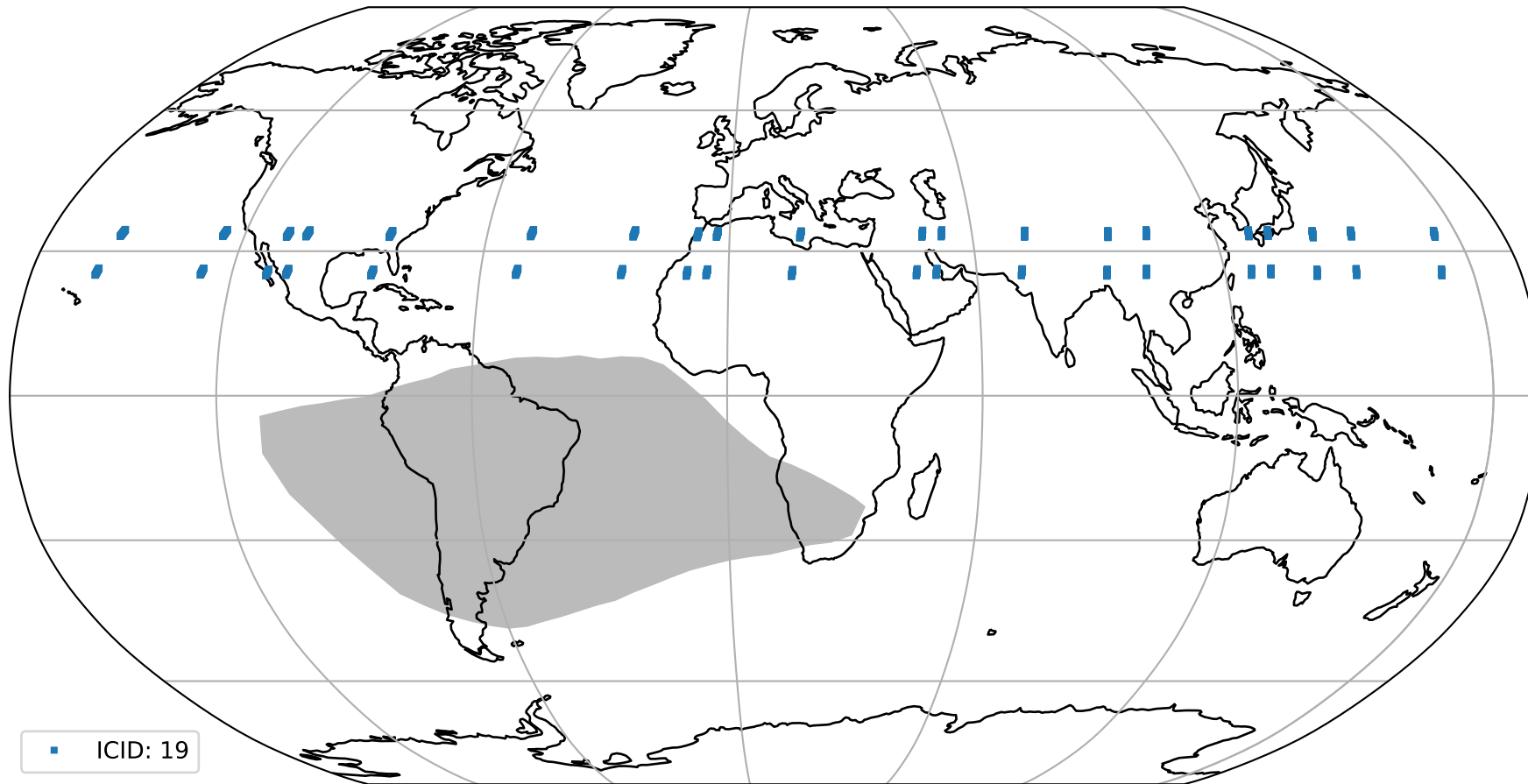
orbits : 20 in [11182, 11227]
coverage : 2019-12-10 / 2019-12-13
created : 2023-08-22T08:03:07

Histograms of pixel-quality



Tropomi SWIR pixel quality (official) ground-tracks of Sentinel-5P

orbits : 20 in [11182, 11227]
coverage : 2019-12-10 / 2019-12-13
created : 2023-08-22T08:03:08



Tropomi SWIR pixel quality (official)

orbits : [2827, 11227]
coverage : 2018-04-30 / 2019-12-13
created : 2023-08-22T08:03:08

trend of pixel quality & temperatures

