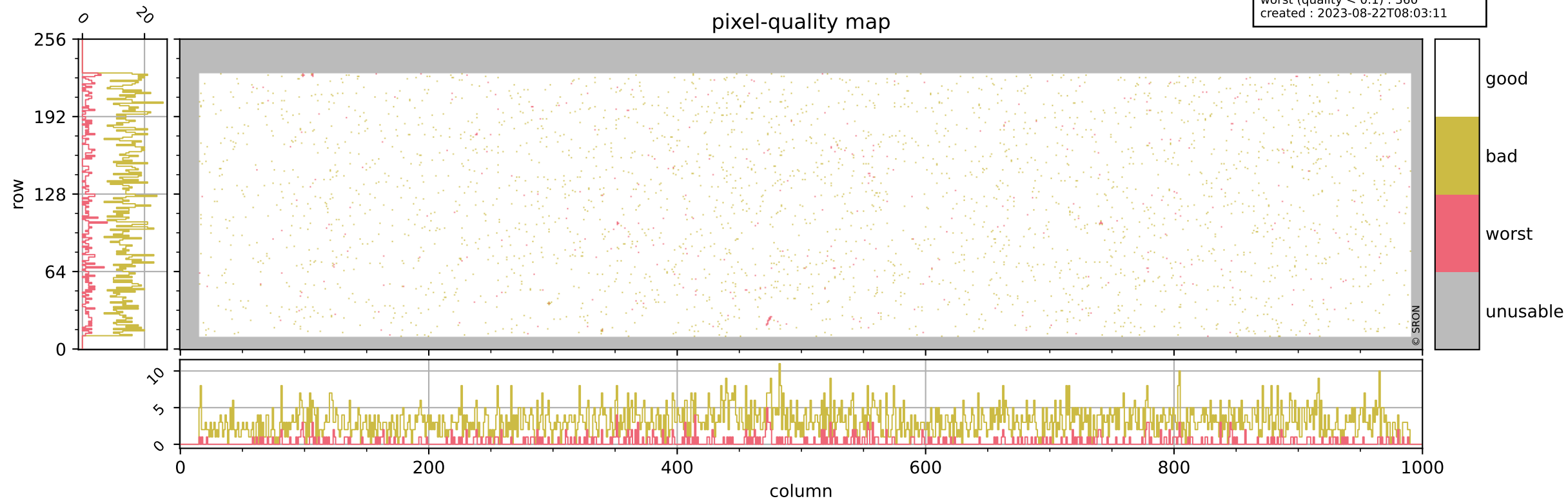


Tropomi SWIR pixel quality (official)

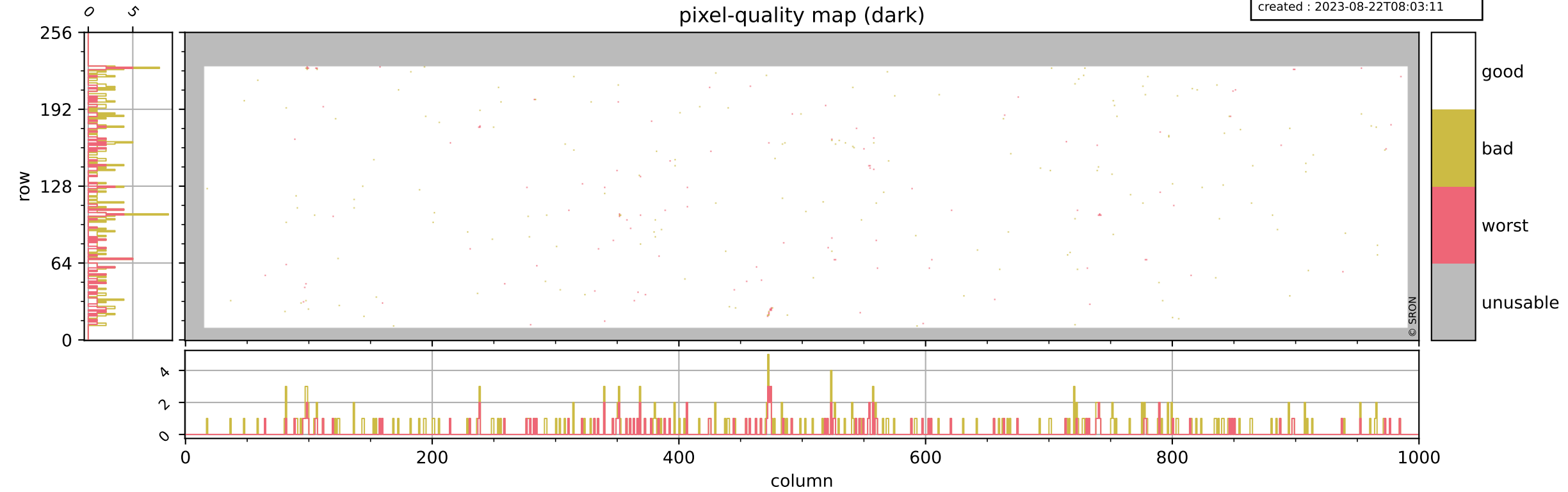
orbits : 20 in [11212, 11257]
coverage : 2019-12-12 / 2019-12-15
bad (quality < 0.8) : 3138
worst (quality < 0.1) : 360
created : 2023-08-22T08:03:11



Tropomi SWIR pixel quality (official)

orbits : 20 in [11212, 11257]
coverage : 2019-12-12 / 2019-12-15
bad (quality < 0.8) : 289
worst (quality < 0.1) : 117
created : 2023-08-22T08:03:11

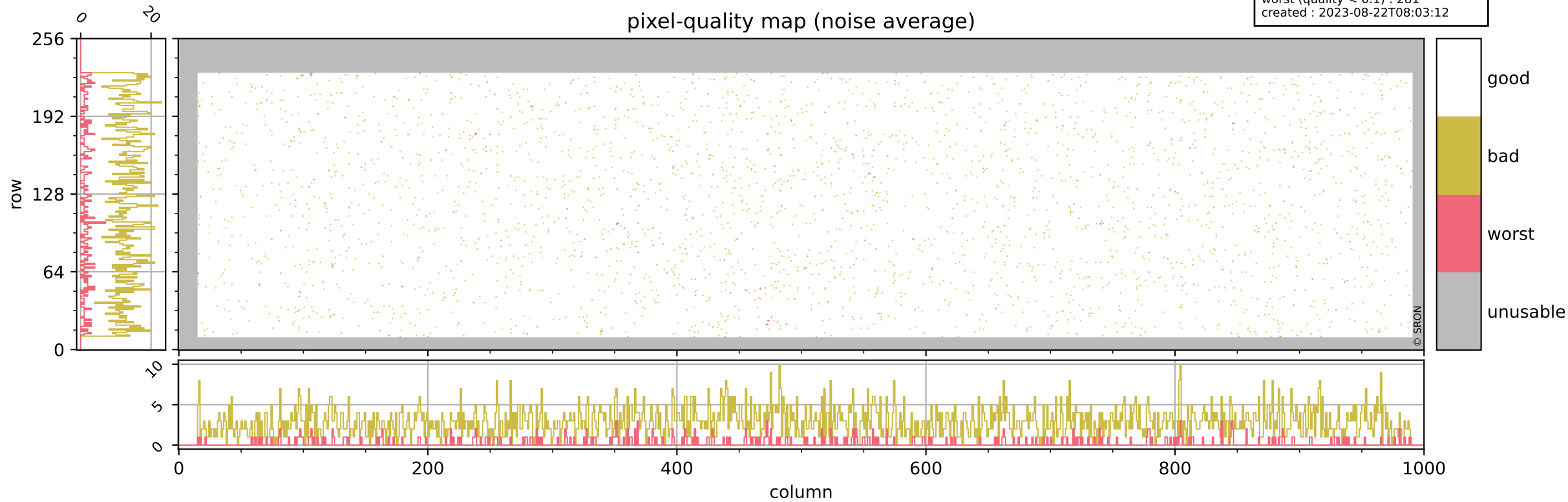
pixel-quality map (dark)



Tropomi SWIR pixel quality (official)

orbits : 20 in [11212, 11257]
coverage : 2019-12-12 / 2019-12-15
bad (quality < 0.8) : 2879
worst (quality < 0.1) : 281
created : 2023-08-22T08:03:12

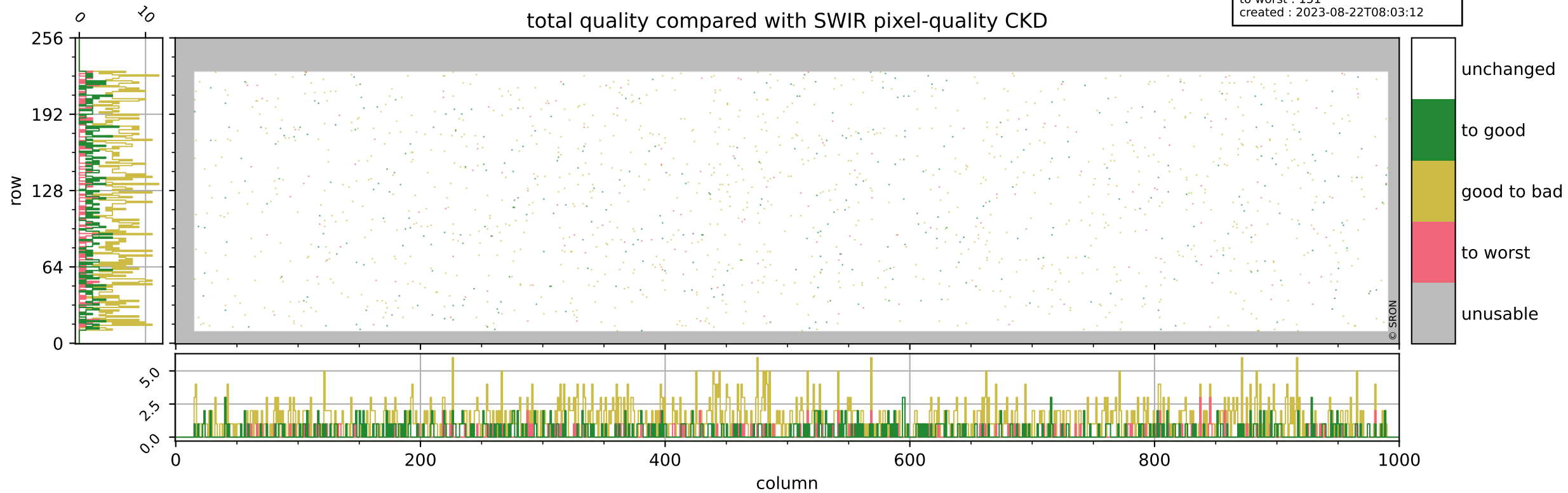
pixel-quality map (noise average)



Tropomi SWIR pixel quality (official)

orbits : 20 in [11212, 11257]
coverage : 2019-12-12 / 2019-12-15
to good : 360
good to bad : 1094
to worst : 151
created : 2023-08-22T08:03:12

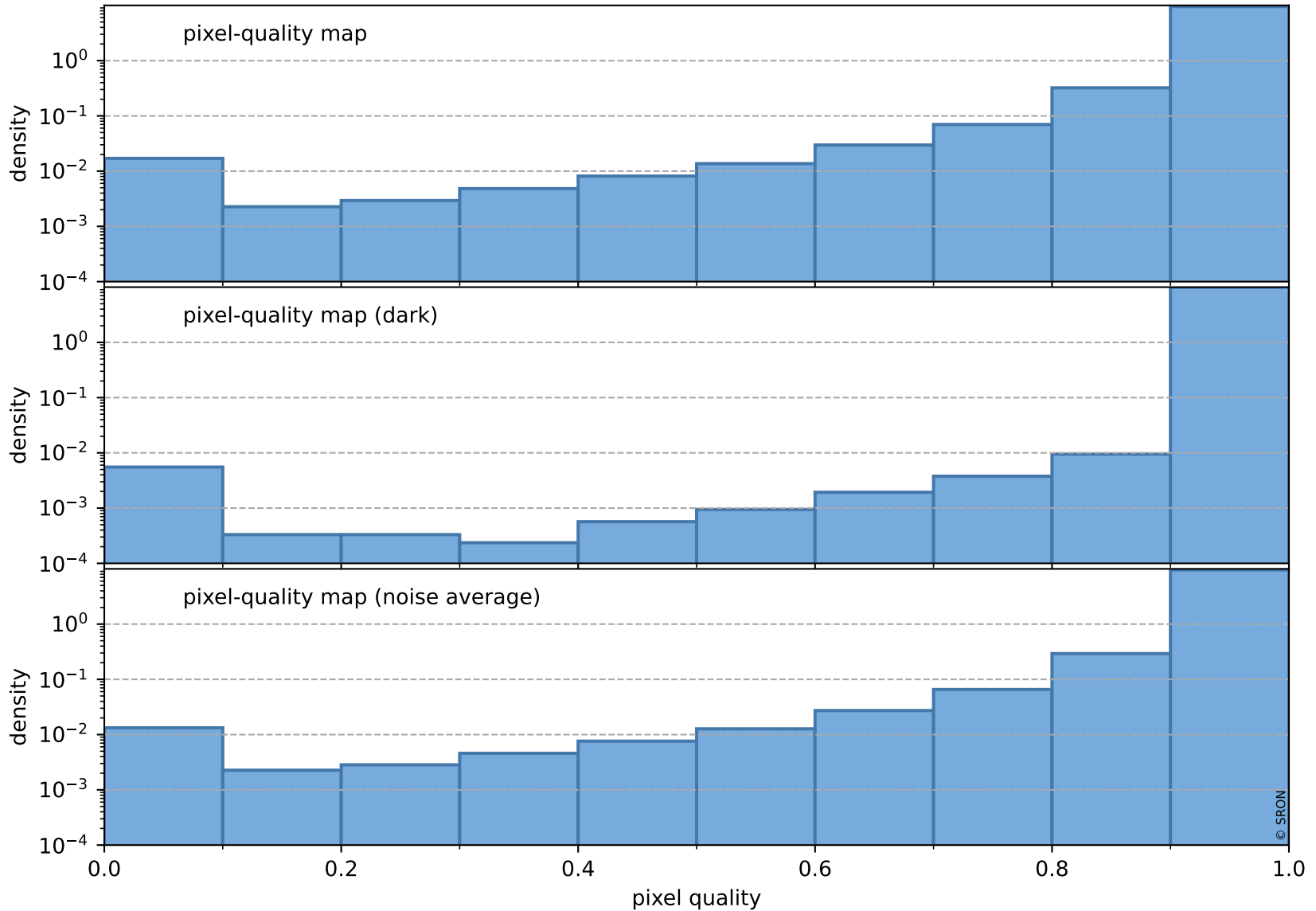
total quality compared with SWIR pixel-quality CKD



Tropomi SWIR pixel quality (official)

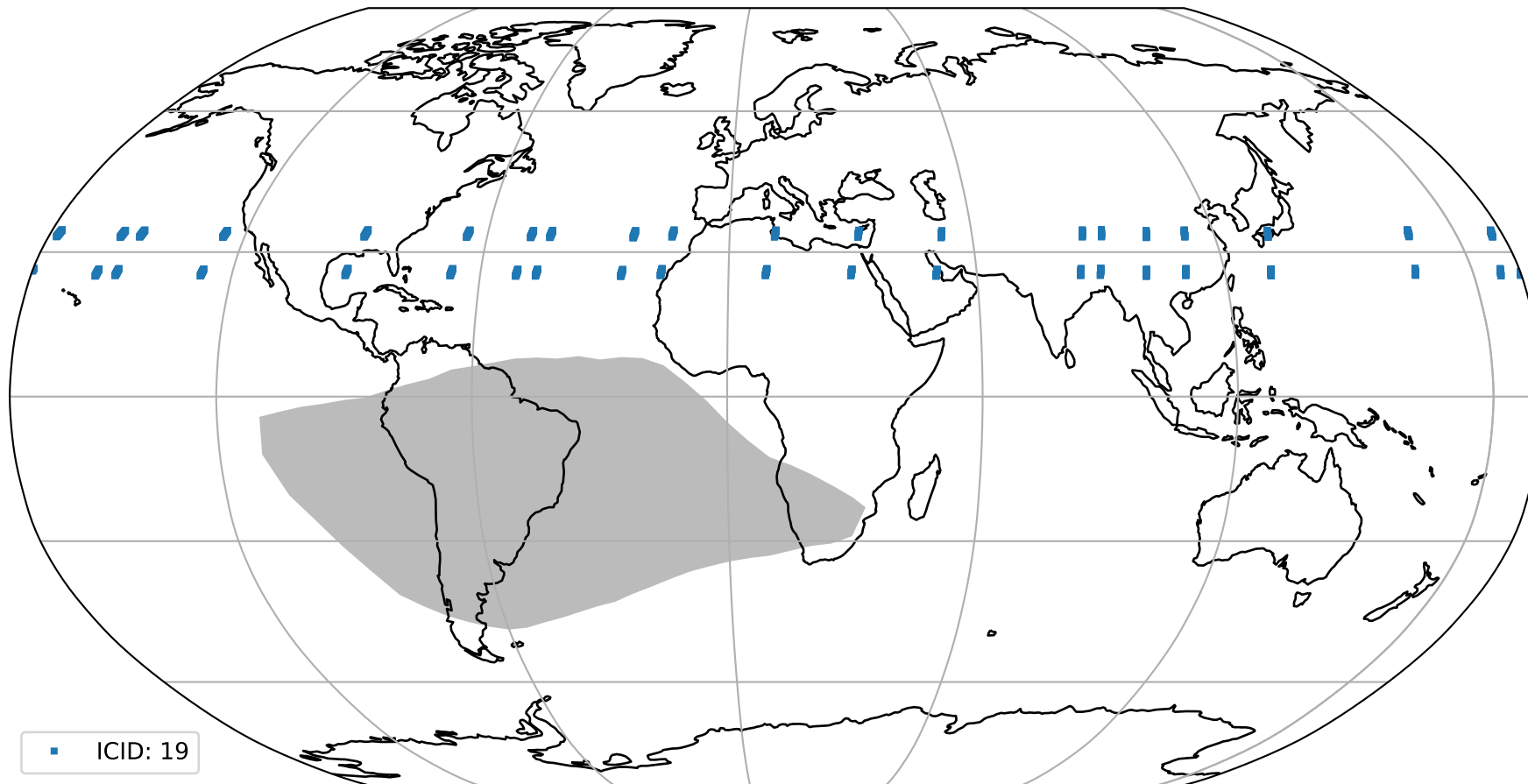
orbits : 20 in [11212, 11257]
coverage : 2019-12-12 / 2019-12-15
created : 2023-08-22T08:03:12

Histograms of pixel-quality



Tropomi SWIR pixel quality (official) ground-tracks of Sentinel-5P

orbits : 20 in [11212, 11257]
coverage : 2019-12-12 / 2019-12-15
created : 2023-08-22T08:03:13



Tropomi SWIR pixel quality (official)

orbits : [2827, 11257]
coverage : 2018-04-30 / 2019-12-15
created : 2023-08-22T08:03:13

trend of pixel quality & temperatures

