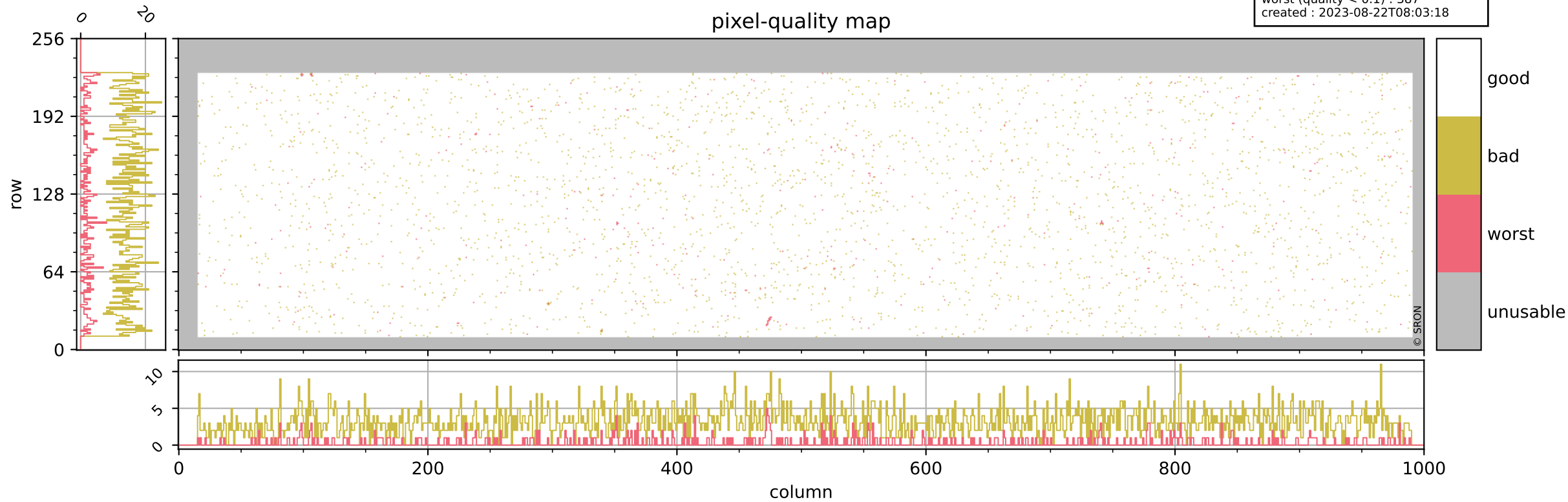


Tropomi SWIR pixel quality (official)

orbits : 19 in [11257, 11302]
coverage : 2019-12-16 / 2019-12-19
bad (quality < 0.8) : 3220
worst (quality < 0.1) : 387
created : 2023-08-22T08:03:18

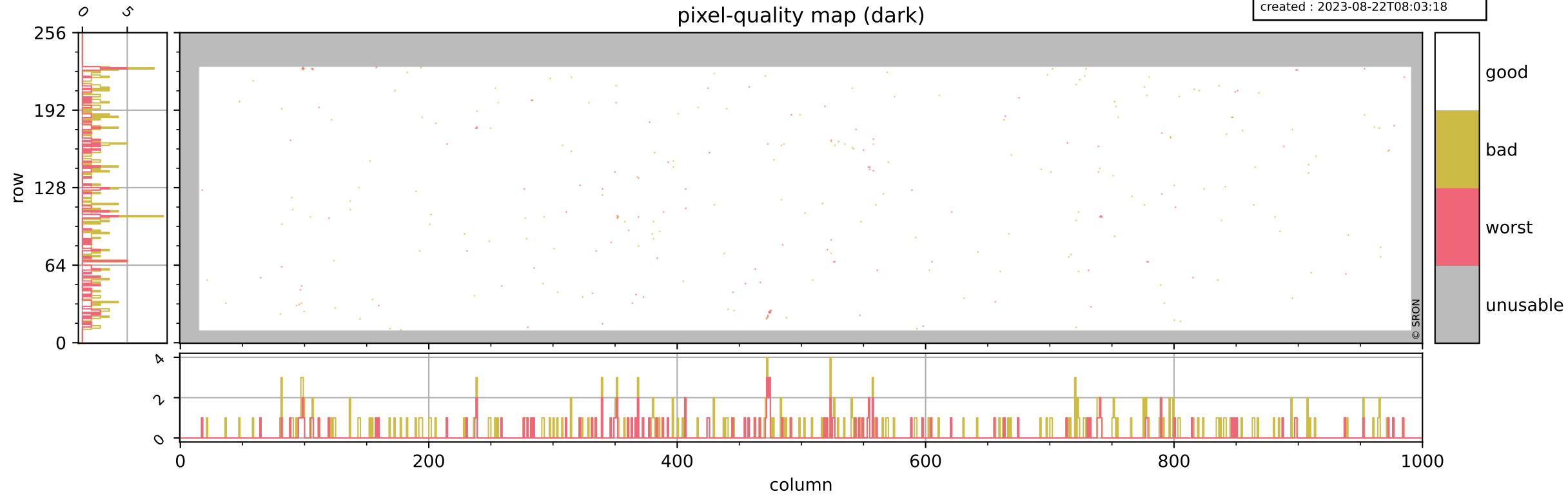
pixel-quality map



Tropomi SWIR pixel quality (official)

orbits : 19 in [11257, 11302]
coverage : 2019-12-16 / 2019-12-19
bad (quality < 0.8) : 293
worst (quality < 0.1) : 114
created : 2023-08-22T08:03:18

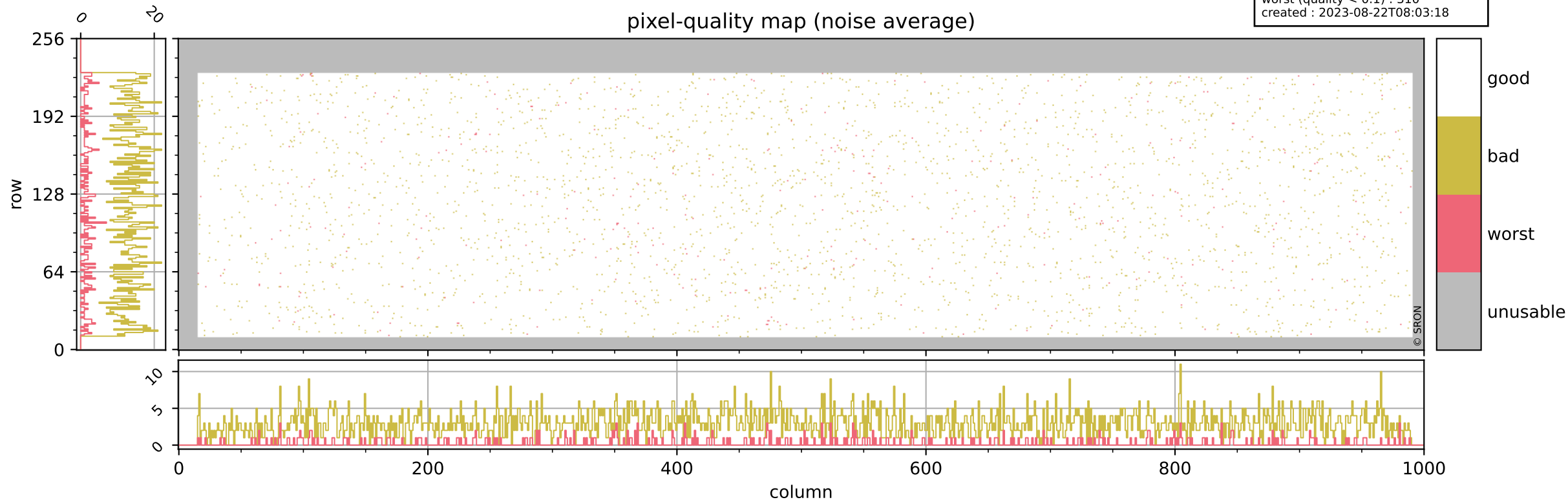
pixel-quality map (dark)



Tropomi SWIR pixel quality (official)

orbits : 19 in [11257, 11302]
coverage : 2019-12-16 / 2019-12-19
bad (quality < 0.8) : 2967
worst (quality < 0.1) : 310
created : 2023-08-22T08:03:18

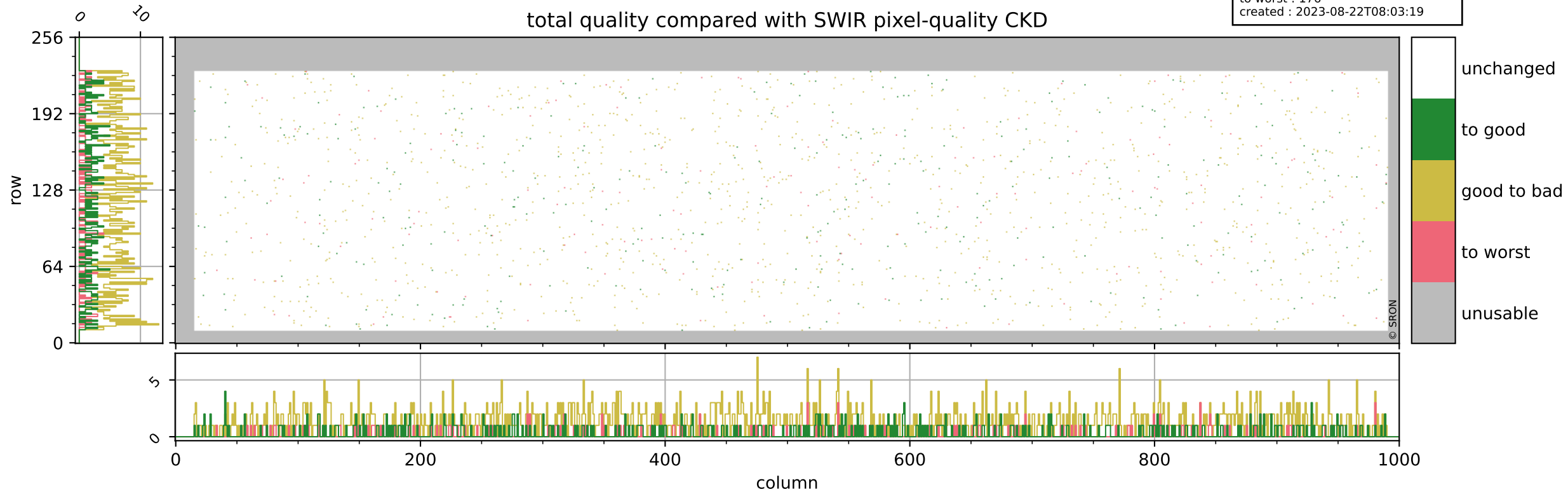
pixel-quality map (noise average)



Tropomi SWIR pixel quality (official)

orbits : 19 in [11257, 11302]
coverage : 2019-12-16 / 2019-12-19
to good : 348
good to bad : 1141
to worst : 176
created : 2023-08-22T08:03:19

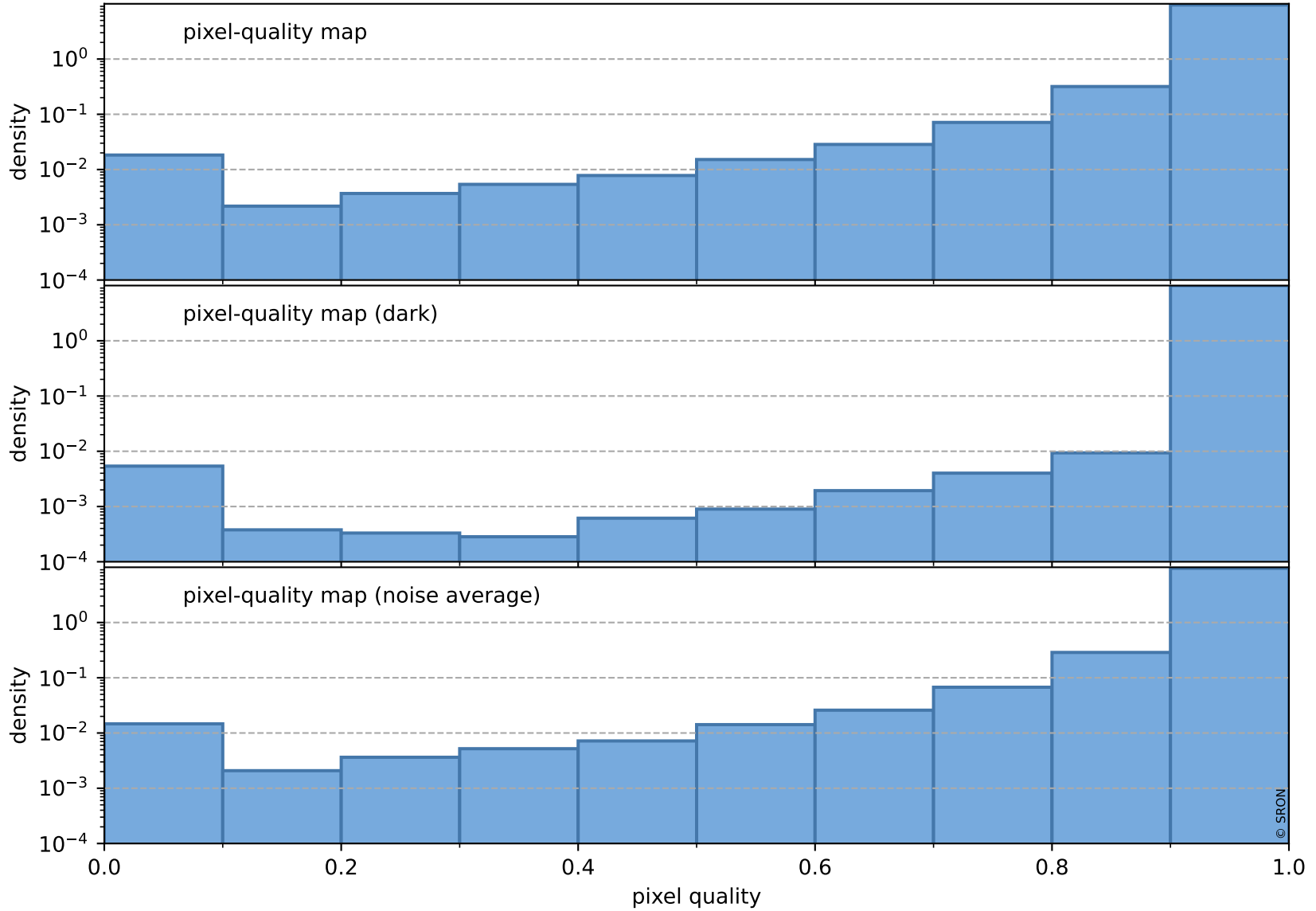
total quality compared with SWIR pixel-quality CKD



Tropomi SWIR pixel quality (official)

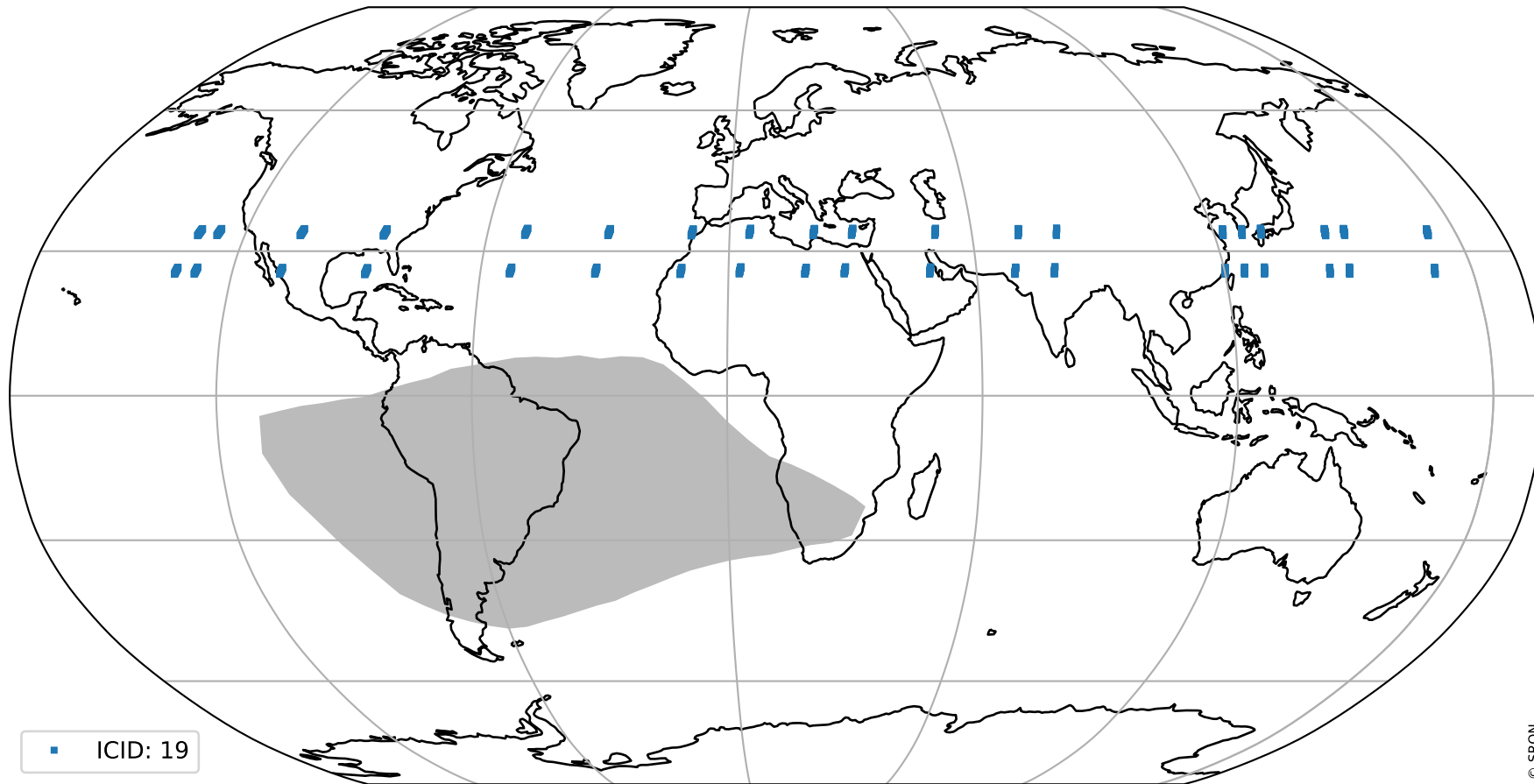
orbits : 19 in [11257, 11302]
coverage : 2019-12-16 / 2019-12-19
created : 2023-08-22T08:03:19

Histograms of pixel-quality



Tropomi SWIR pixel quality (official) ground-tracks of Sentinel-5P

orbits : 19 in [11257, 11302]
coverage : 2019-12-16 / 2019-12-19
created : 2023-08-22T08:03:19



Tropomi SWIR pixel quality (official)

orbits : [2827, 11302]
coverage : 2018-04-30 / 2019-12-19
created : 2023-08-22T08:03:20

trend of pixel quality & temperatures

