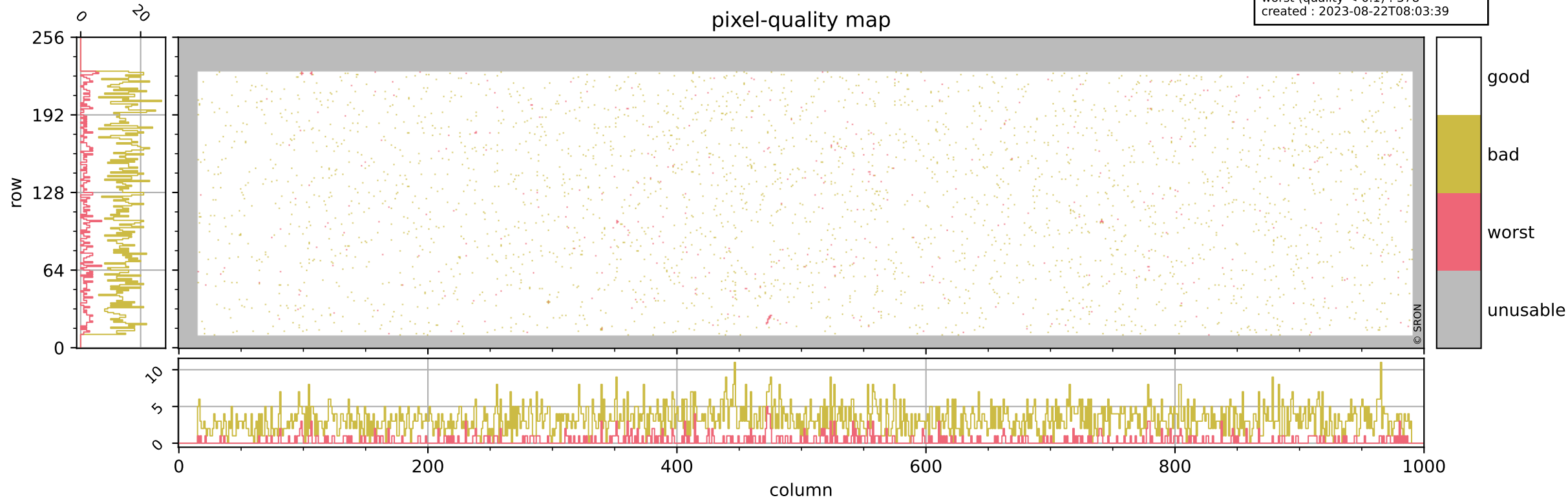


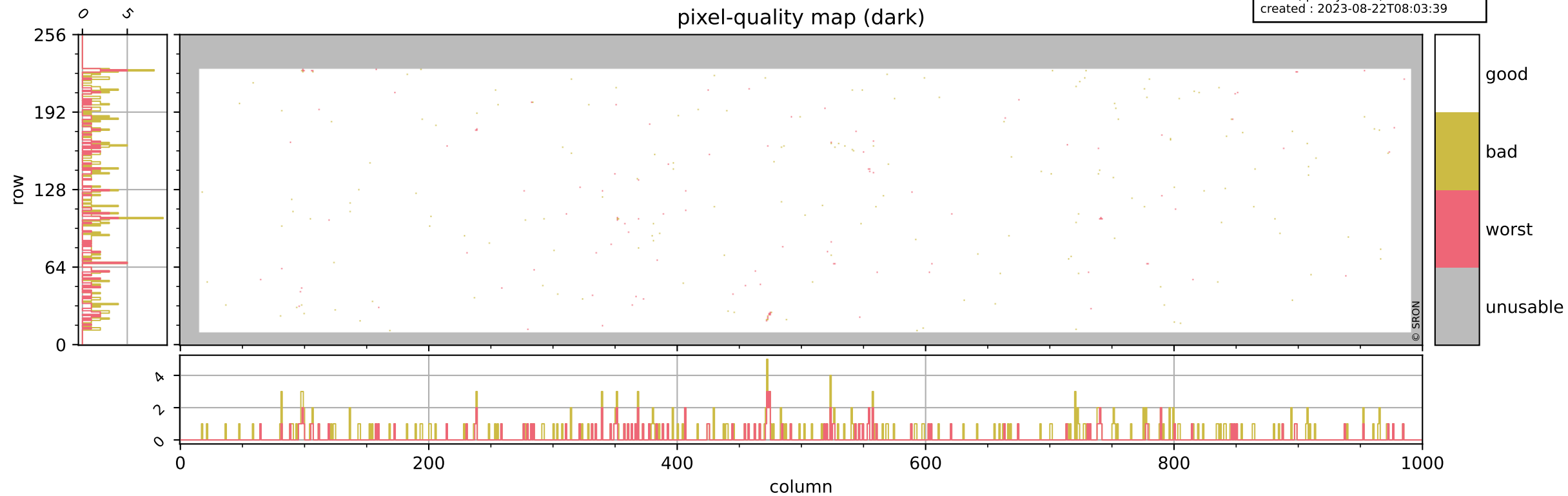
Tropomi SWIR pixel quality (official)

orbits : 20 in [11392, 11437]
coverage : 2019-12-25 / 2019-12-28
bad (quality < 0.8) : 3193
worst (quality < 0.1) : 378
created : 2023-08-22T08:03:39



Tropomi SWIR pixel quality (official)

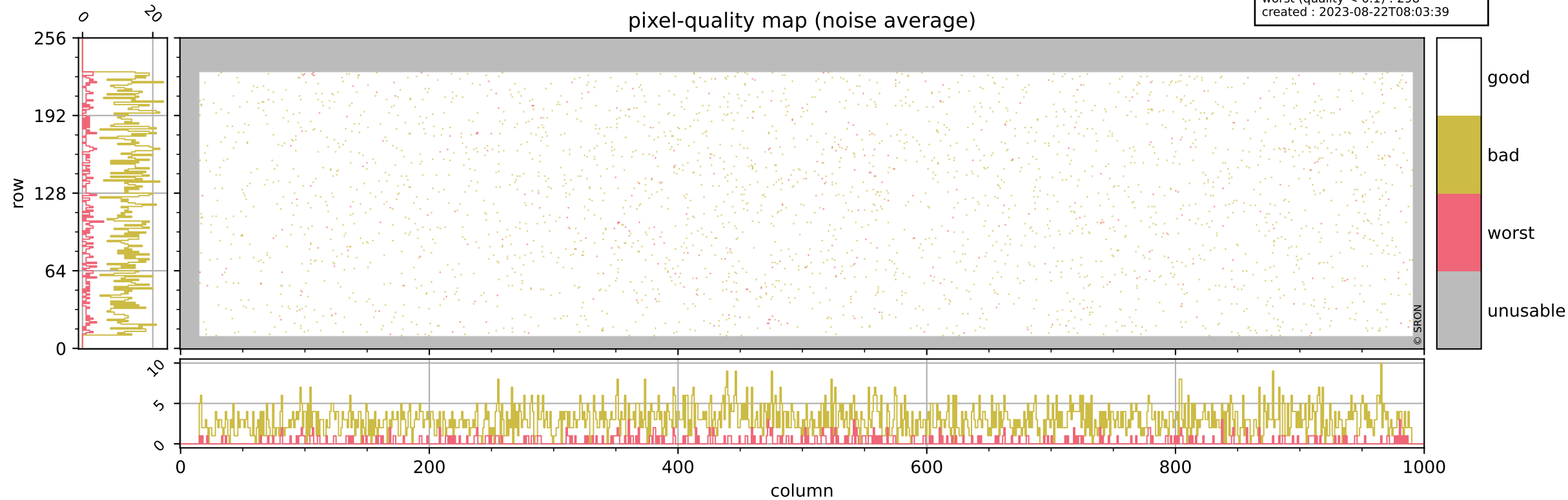
orbits : 20 in [11392, 11437]
coverage : 2019-12-25 / 2019-12-28
bad (quality < 0.8) : 290
worst (quality < 0.1) : 114
created : 2023-08-22T08:03:39



Tropomi SWIR pixel quality (official)

orbits : 20 in [11392, 11437]
coverage : 2019-12-25 / 2019-12-28
bad (quality < 0.8) : 2935
worst (quality < 0.1) : 298
created : 2023-08-22T08:03:39

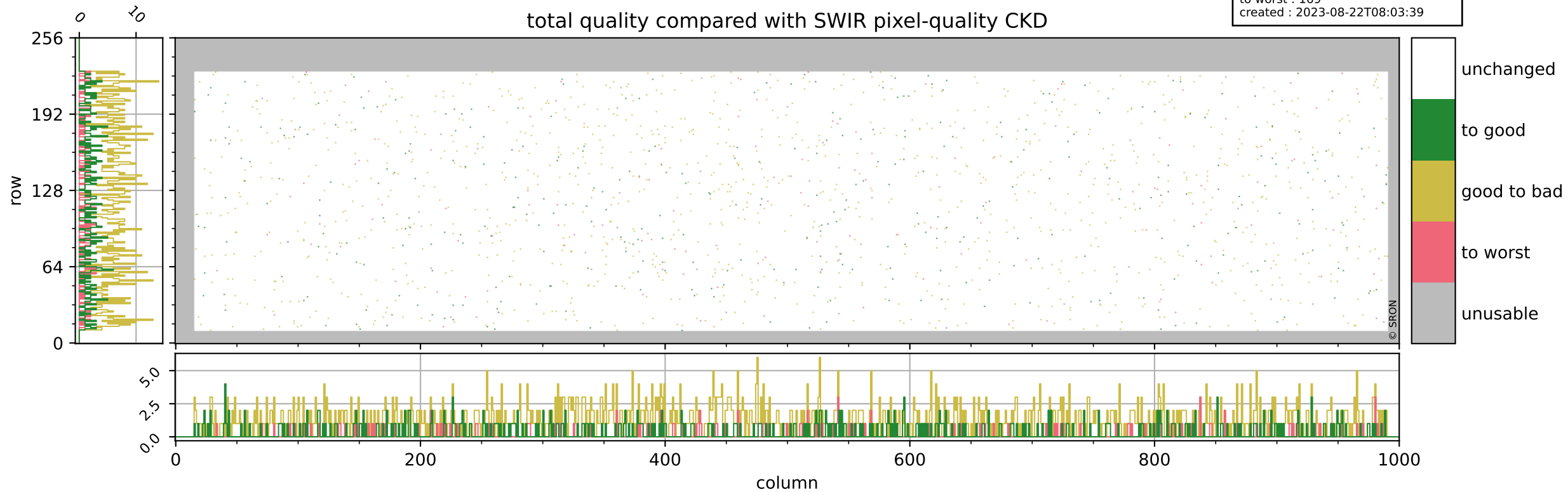
pixel-quality map (noise average)



Tropomi SWIR pixel quality (official)

orbits : 20 in [11392, 11437]
coverage : 2019-12-25 / 2019-12-28
to good : 356
good to bad : 1128
to worst : 169
created : 2023-08-22T08:03:39

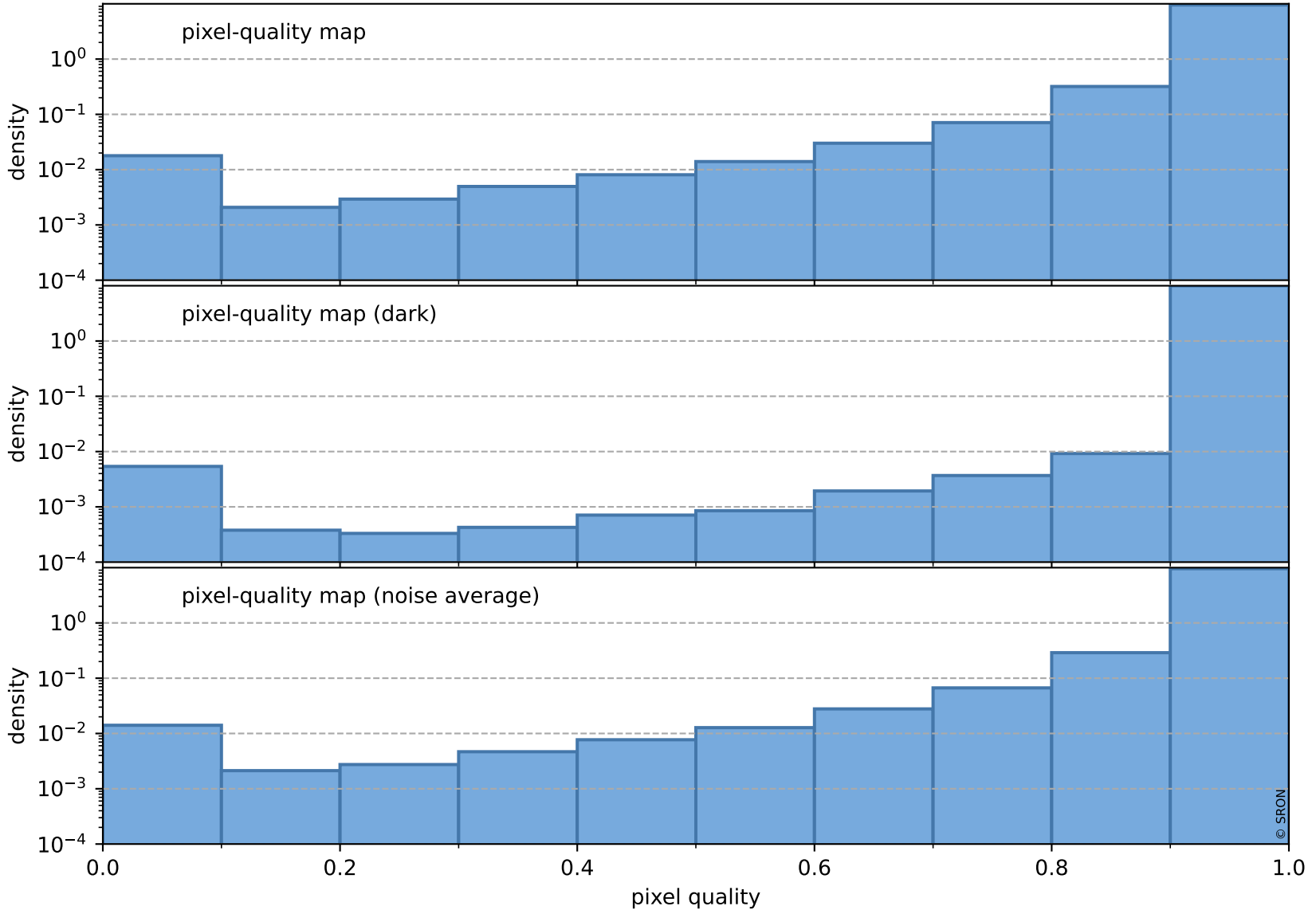
total quality compared with SWIR pixel-quality CKD



Tropomi SWIR pixel quality (official)

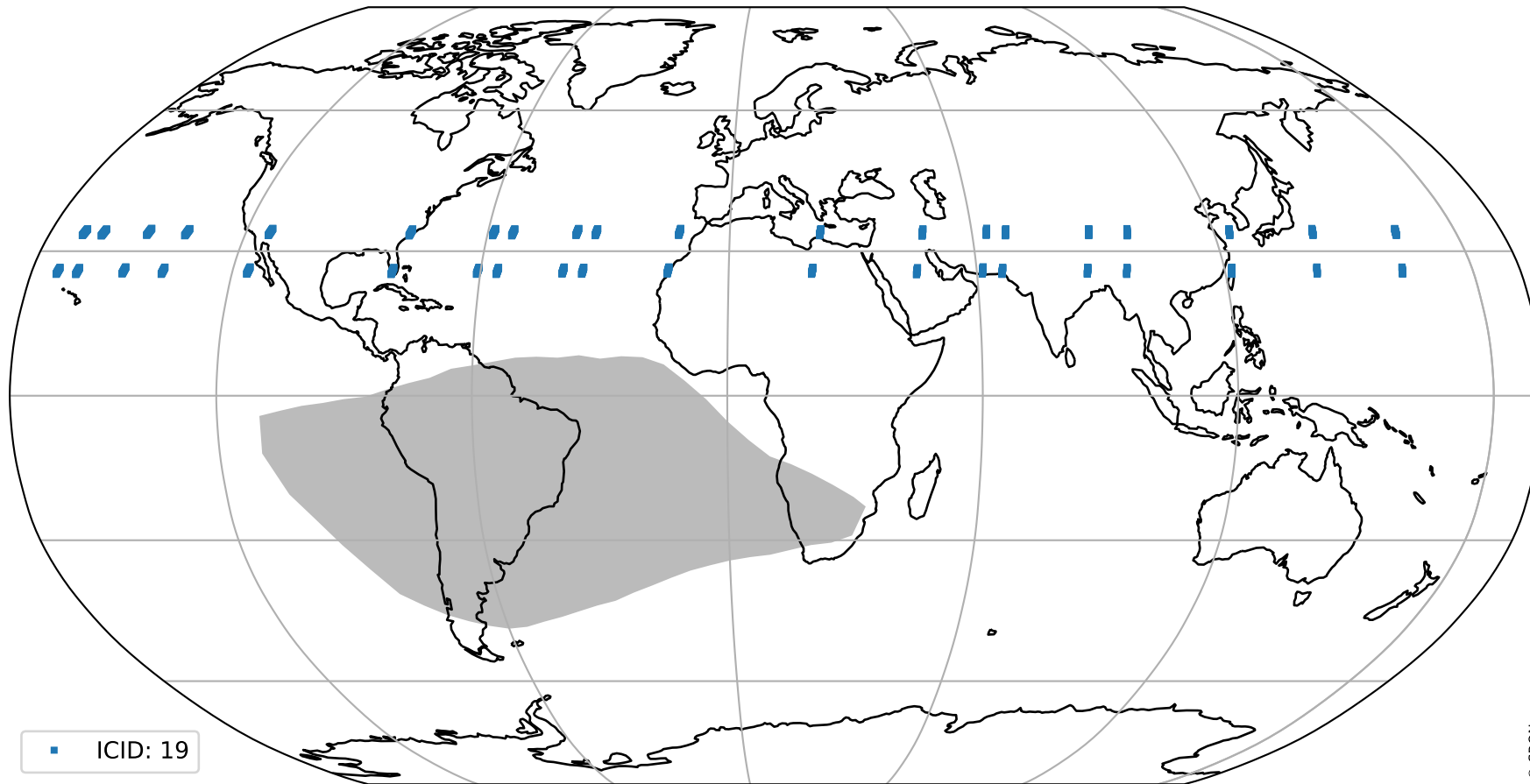
orbits : 20 in [11392, 11437]
coverage : 2019-12-25 / 2019-12-28
created : 2023-08-22T08:03:39

Histograms of pixel-quality



Tropomi SWIR pixel quality (official) ground-tracks of Sentinel-5P

orbits : 20 in [11392, 11437]
coverage : 2019-12-25 / 2019-12-28
created : 2023-08-22T08:03:40



Tropomi SWIR pixel quality (official)

orbits : [2827, 11437]
coverage : 2018-04-30 / 2019-12-28
created : 2023-08-22T08:03:40

trend of pixel quality & temperatures

