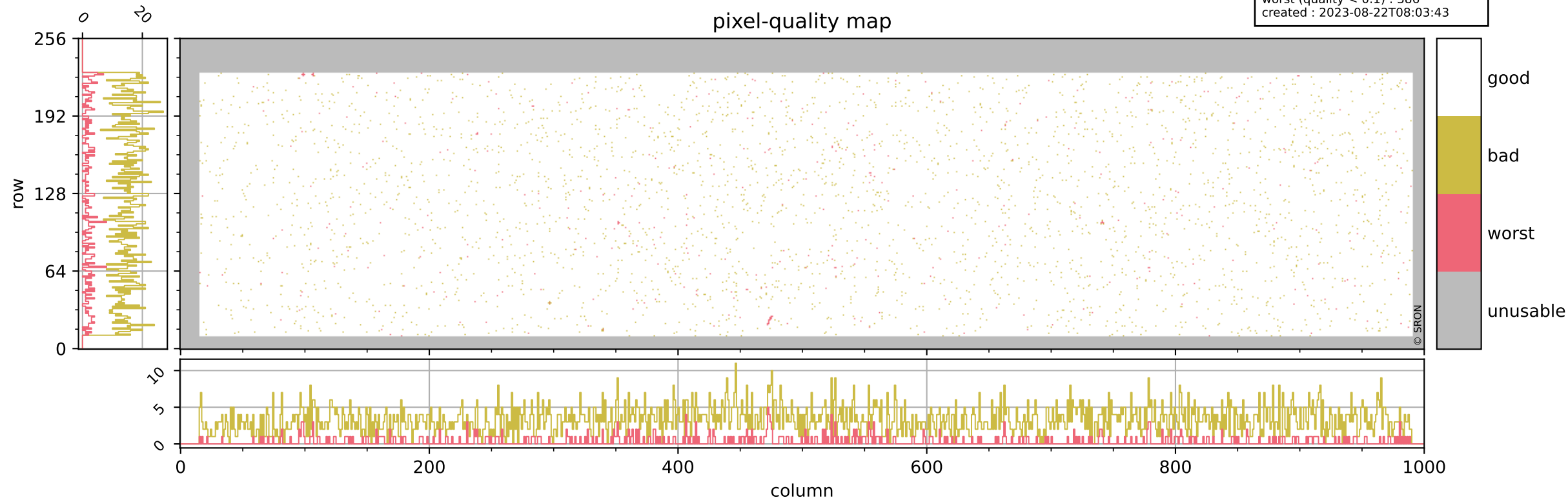


Tropomi SWIR pixel quality (official)

orbits : 20 in [11422, 11467]
coverage : 2019-12-27 / 2019-12-30
bad (quality < 0.8) : 3289
worst (quality < 0.1) : 386
created : 2023-08-22T08:03:43

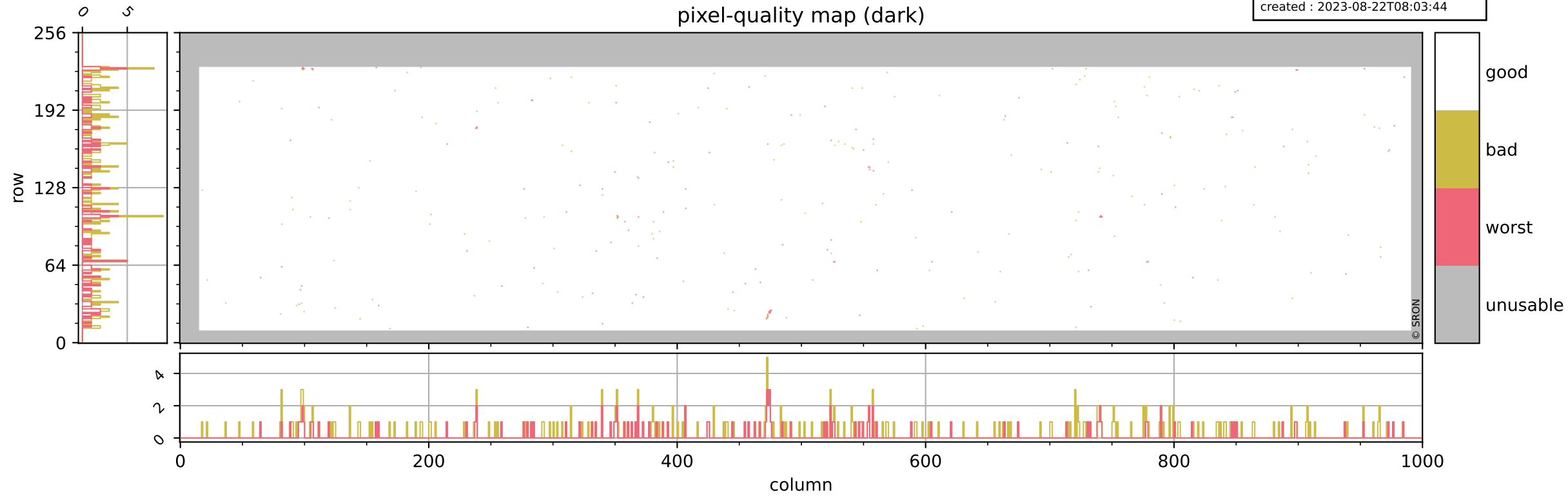
pixel-quality map



Tropomi SWIR pixel quality (official)

orbits : 20 in [11422, 11467]
coverage : 2019-12-27 / 2019-12-30
bad (quality < 0.8) : 289
worst (quality < 0.1) : 113
created : 2023-08-22T08:03:44

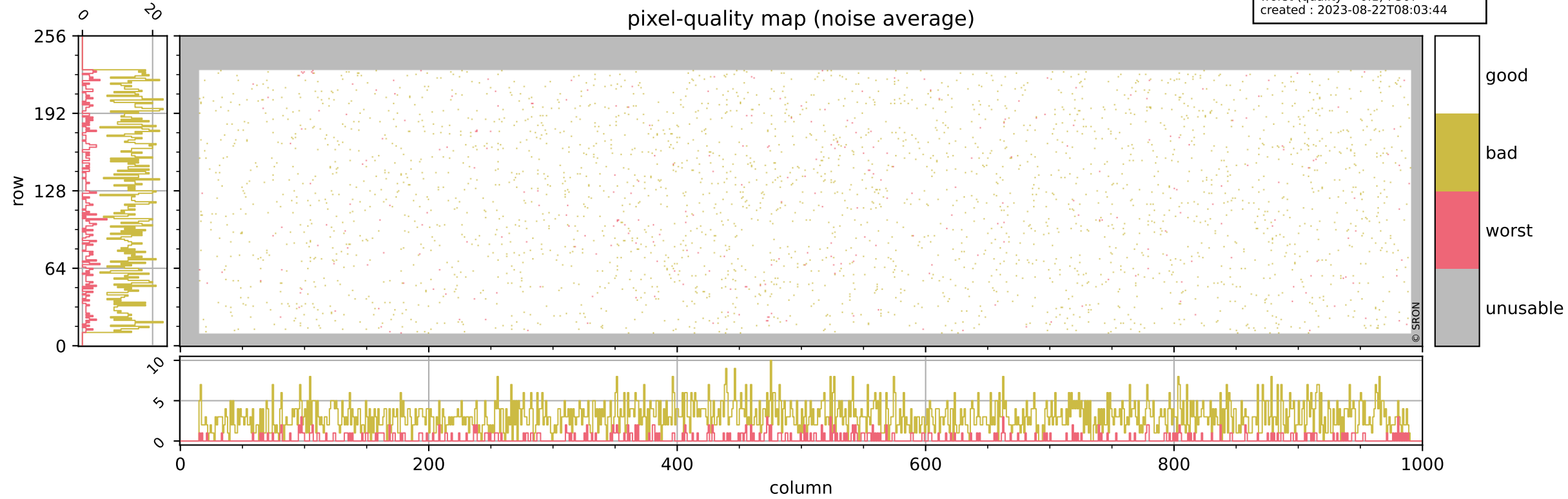
pixel-quality map (dark)



Tropomi SWIR pixel quality (official)

orbits : 20 in [11422, 11467]
coverage : 2019-12-27 / 2019-12-30
bad (quality < 0.8) : 3028
worst (quality < 0.1) : 307
created : 2023-08-22T08:03:44

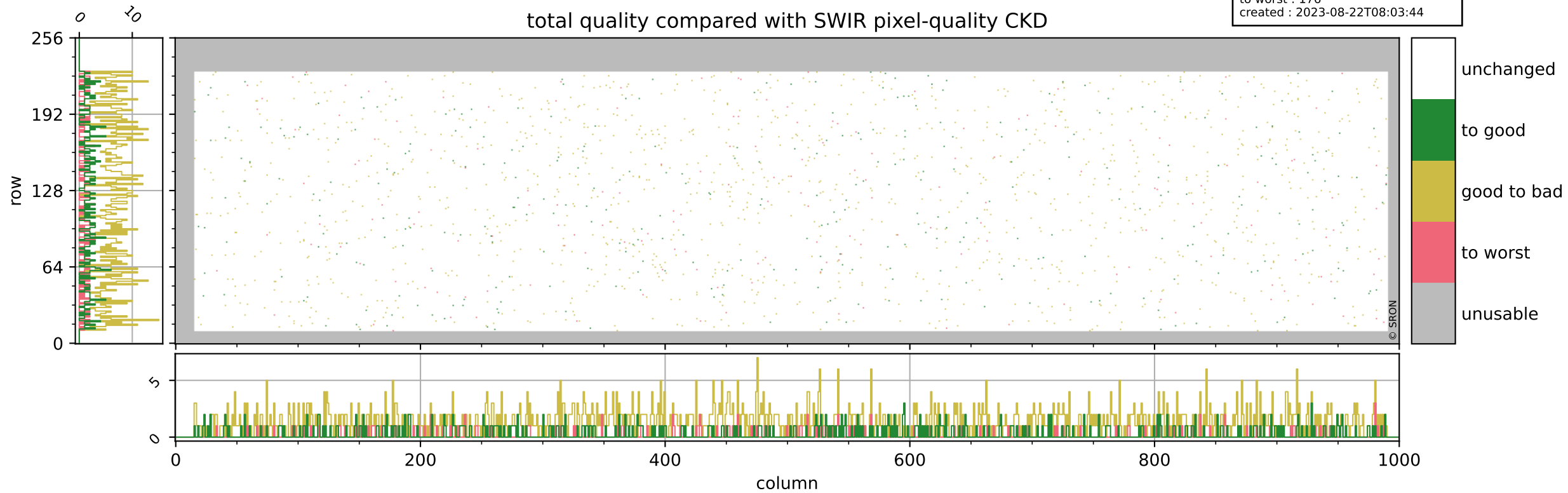
pixel-quality map (noise average)



Tropomi SWIR pixel quality (official)

orbits : 20 in [11422, 11467]
coverage : 2019-12-27 / 2019-12-30
to good : 341
good to bad : 1204
to worst : 176
created : 2023-08-22T08:03:44

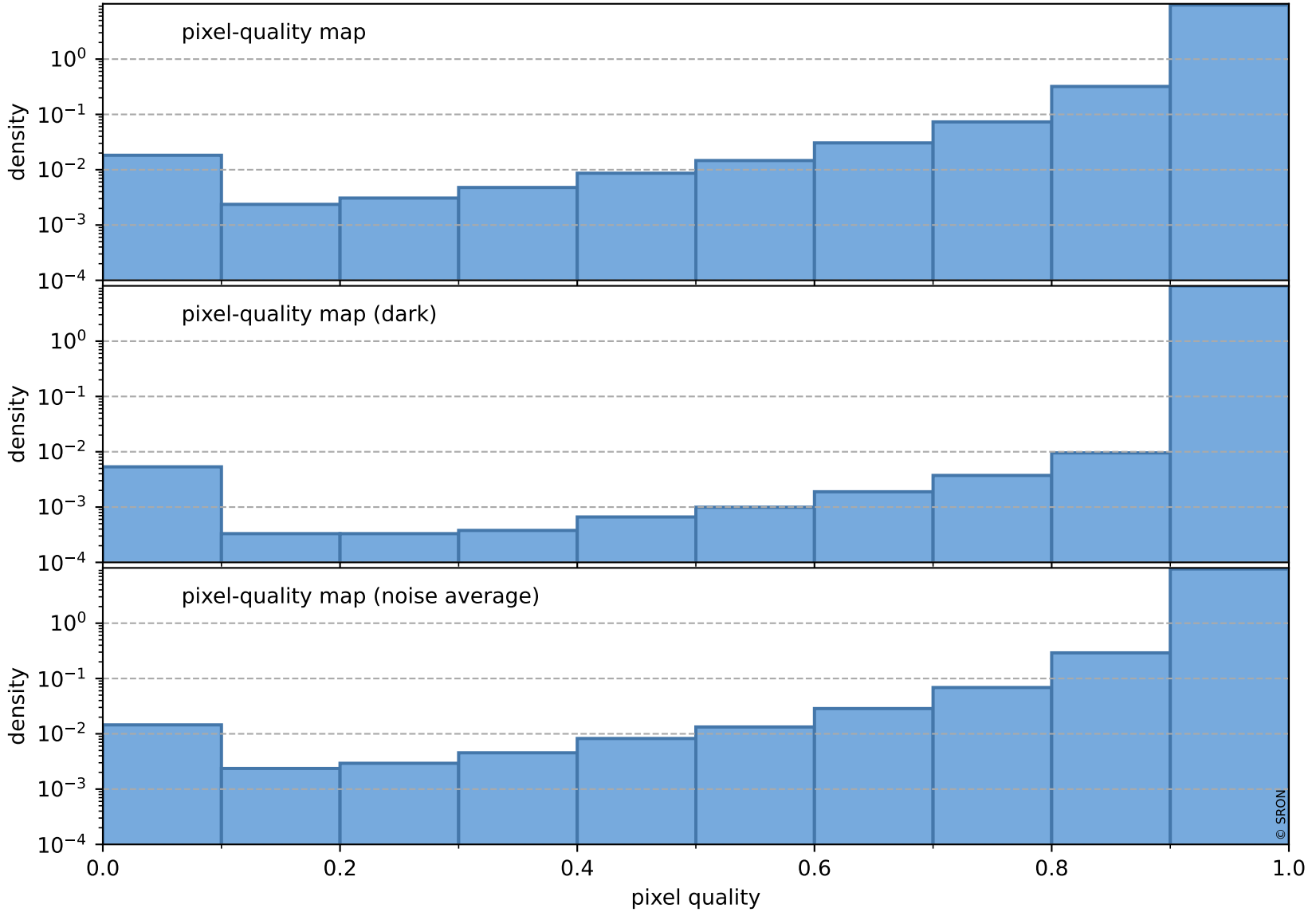
total quality compared with SWIR pixel-quality CKD



Tropomi SWIR pixel quality (official)

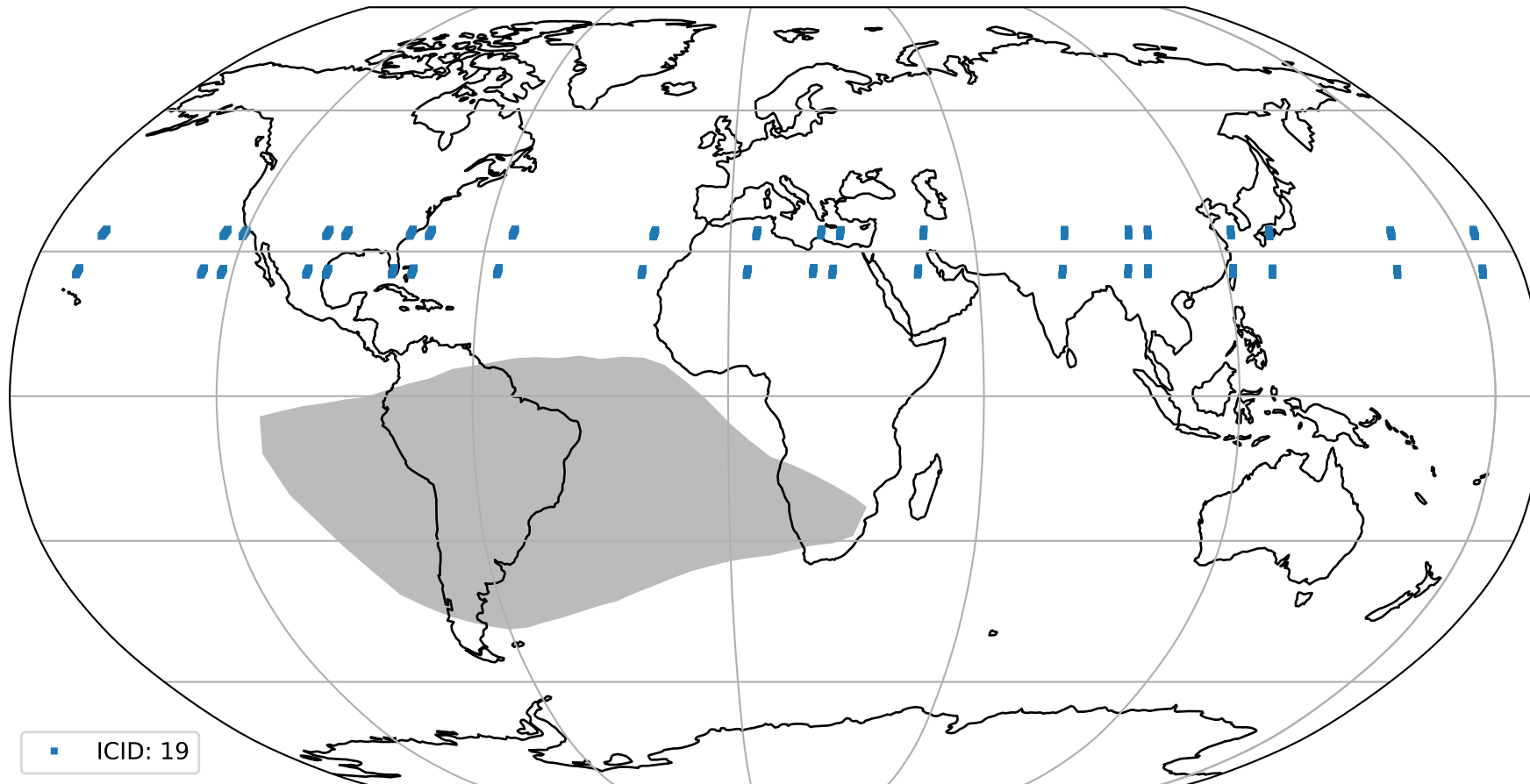
orbits : 20 in [11422, 11467]
coverage : 2019-12-27 / 2019-12-30
created : 2023-08-22T08:03:44

Histograms of pixel-quality



Tropomi SWIR pixel quality (official) ground-tracks of Sentinel-5P

orbits : 20 in [11422, 11467]
coverage : 2019-12-27 / 2019-12-30
created : 2023-08-22T08:03:45



Tropomi SWIR pixel quality (official)

orbits : [2827, 11467]
coverage : 2018-04-30 / 2019-12-30
created : 2023-08-22T08:03:45

trend of pixel quality & temperatures

