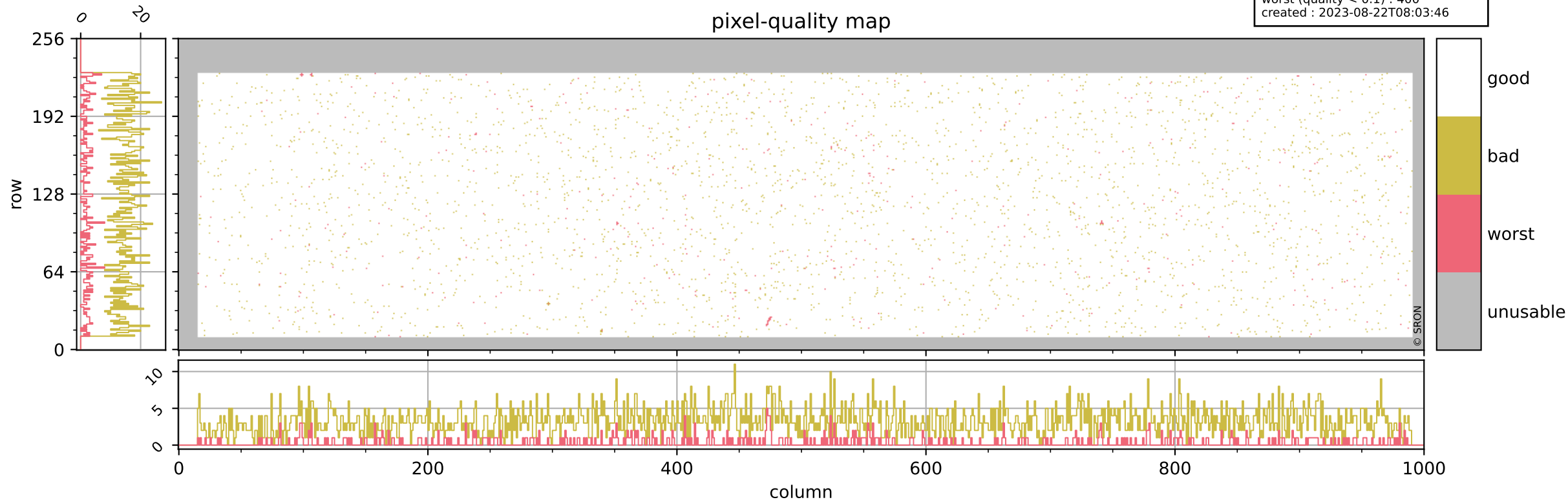


# Tropomi SWIR pixel quality (official)

orbits : 19 in [11437, 11482]  
coverage : 2019-12-28 / 2019-12-31  
bad (quality < 0.8) : 3251  
worst (quality < 0.1) : 400  
created : 2023-08-22T08:03:46

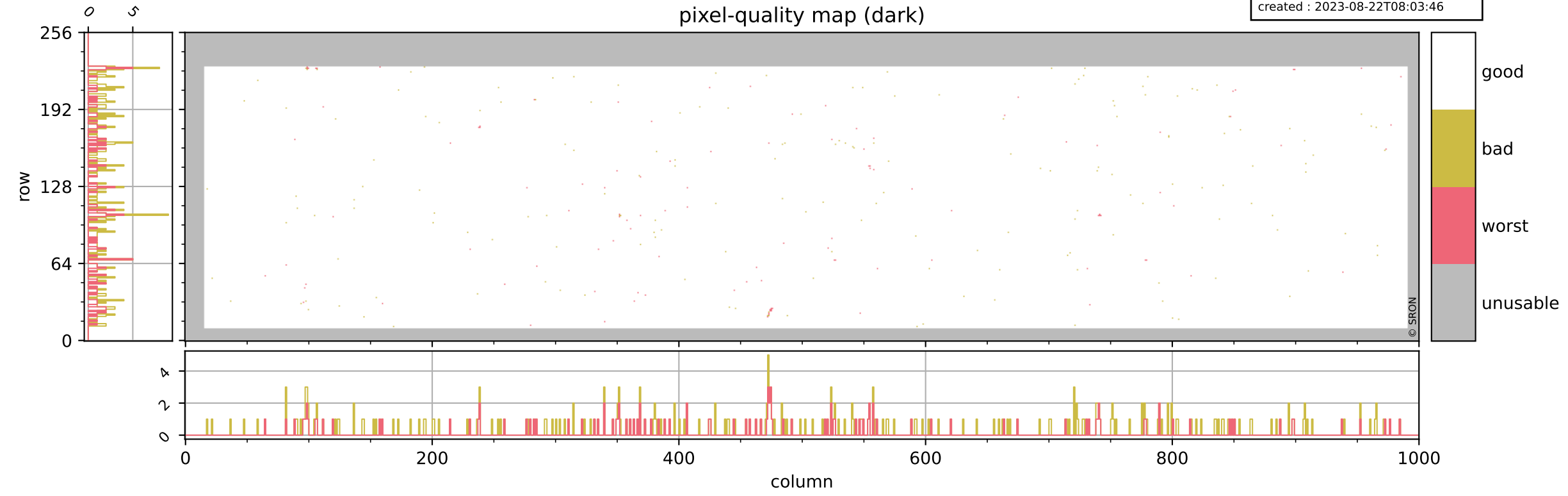
## pixel-quality map



# Tropomi SWIR pixel quality (official)

orbits : 19 in [11437, 11482]  
coverage : 2019-12-28 / 2019-12-31  
bad (quality < 0.8) : 288  
worst (quality < 0.1) : 113  
created : 2023-08-22T08:03:46

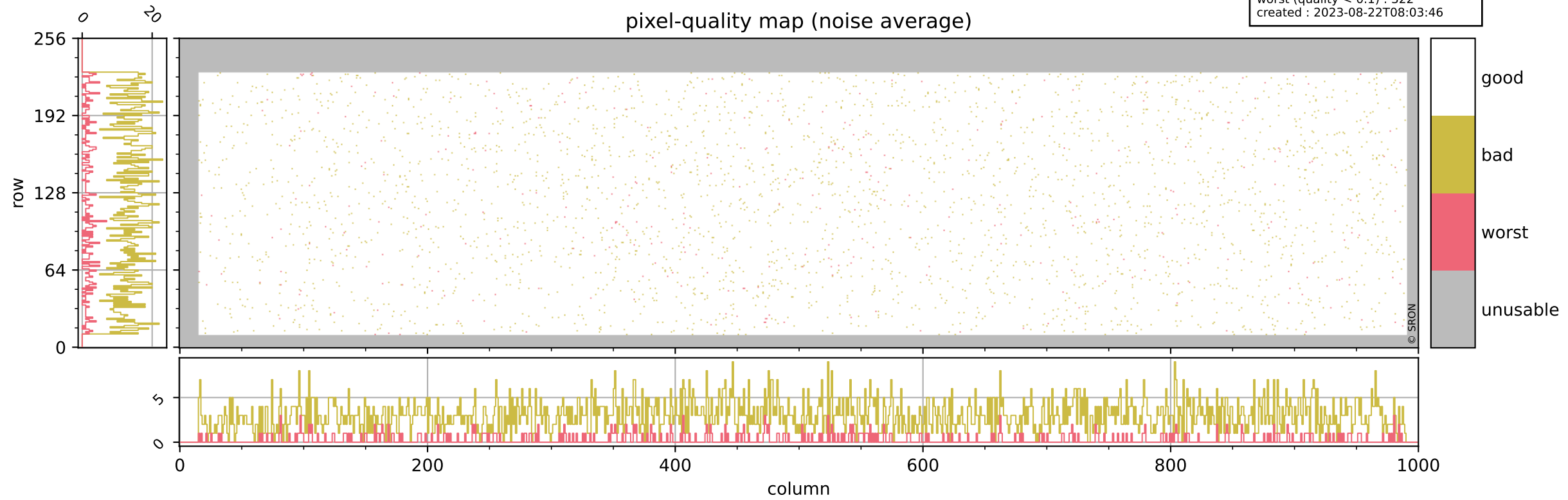
## pixel-quality map (dark)



# Tropomi SWIR pixel quality (official)

orbits : 19 in [11437, 11482]  
coverage : 2019-12-28 / 2019-12-31  
bad (quality < 0.8) : 2997  
worst (quality < 0.1) : 322  
created : 2023-08-22T08:03:46

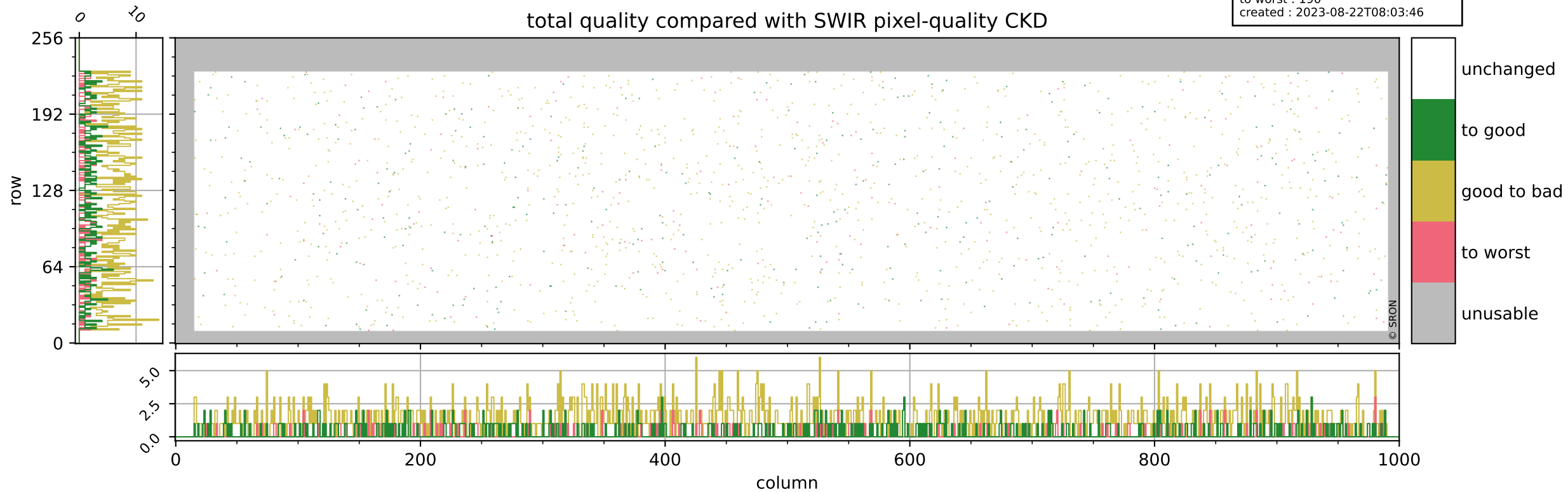
## pixel-quality map (noise average)



# Tropomi SWIR pixel quality (official)

orbits : 19 in [11437, 11482]  
coverage : 2019-12-28 / 2019-12-31  
to good : 350  
good to bad : 1163  
to worst : 190  
created : 2023-08-22T08:03:46

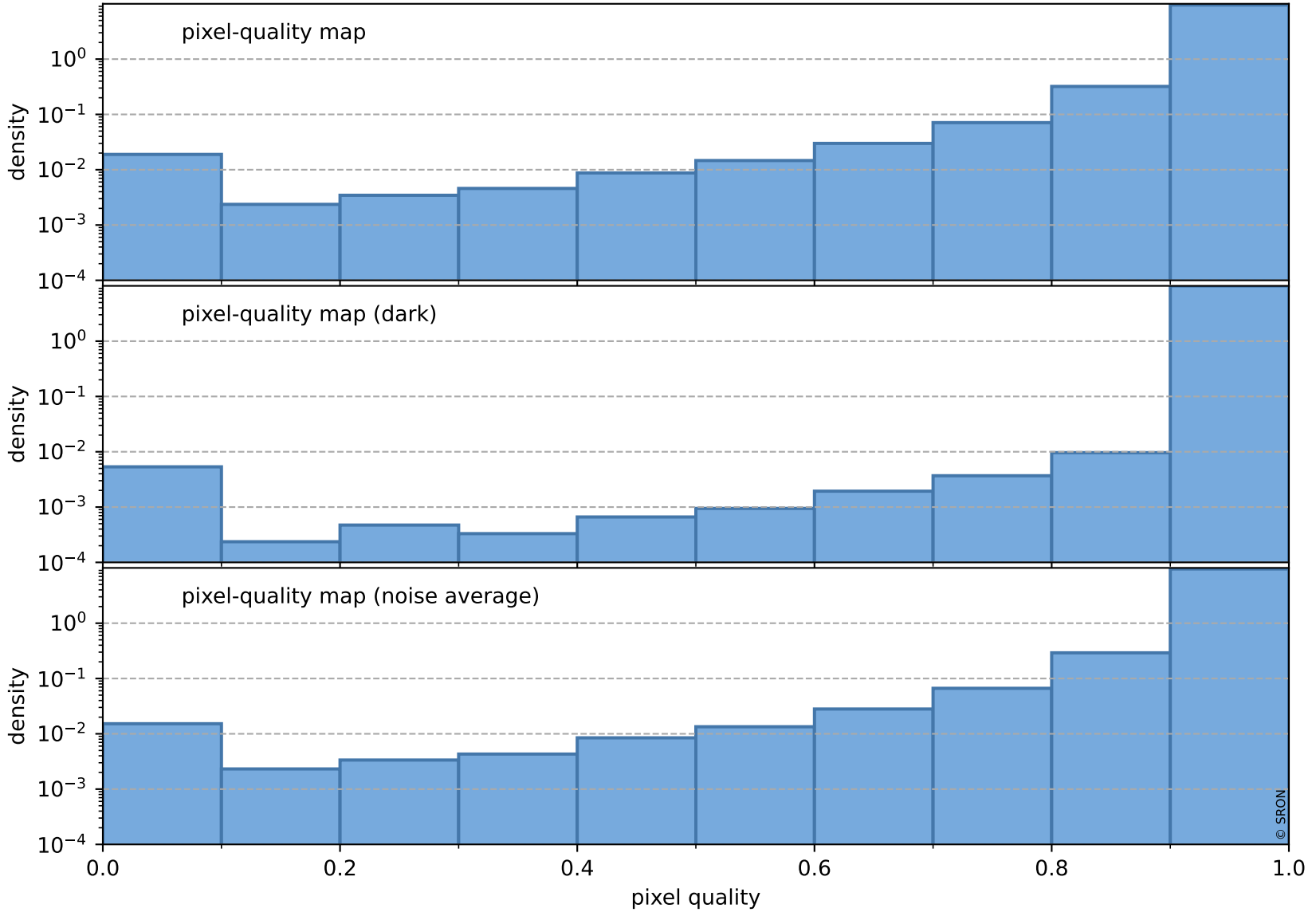
## total quality compared with SWIR pixel-quality CKD



# Tropomi SWIR pixel quality (official)

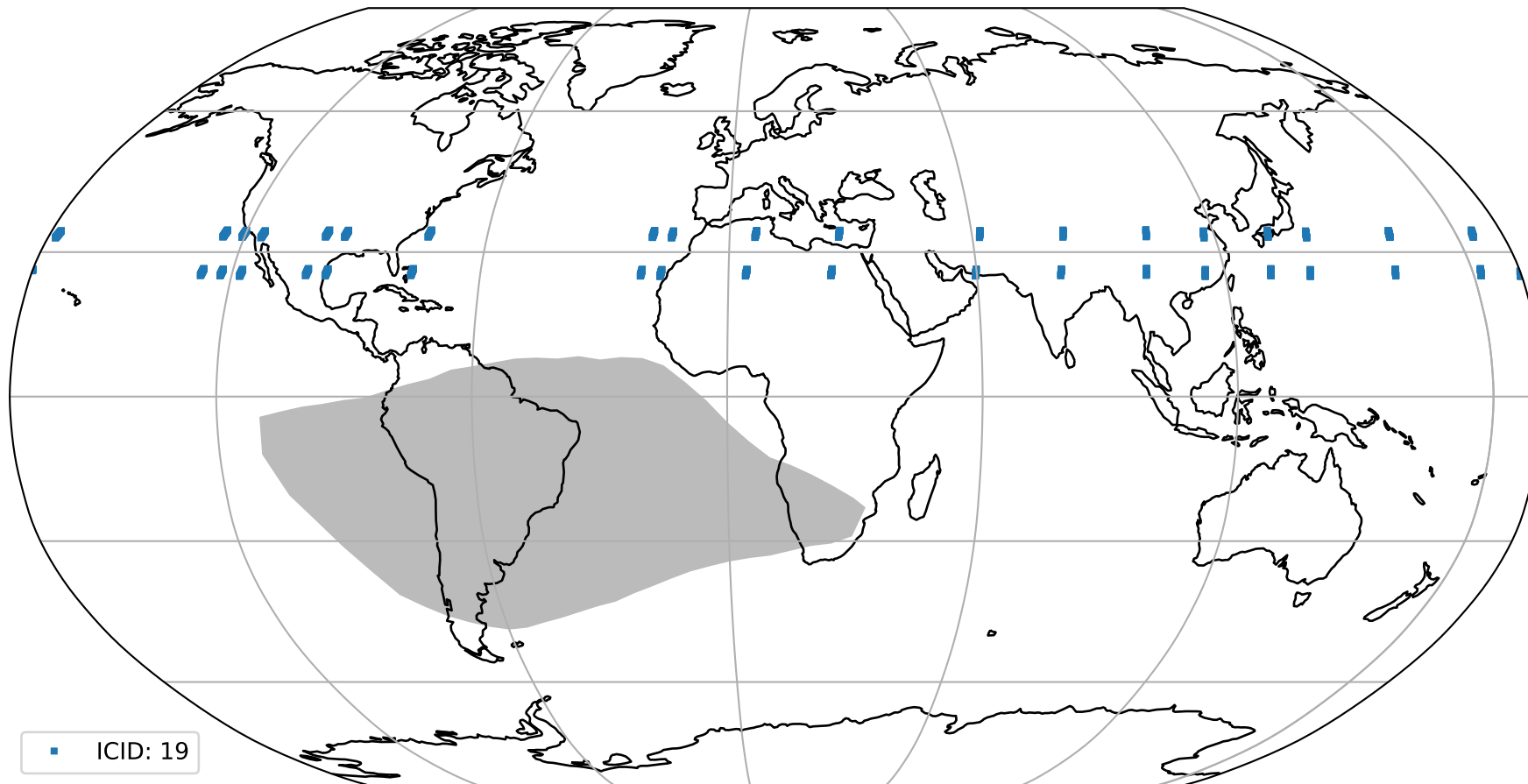
orbits : 19 in [11437, 11482]  
coverage : 2019-12-28 / 2019-12-31  
created : 2023-08-22T08:03:46

## Histograms of pixel-quality



# Tropomi SWIR pixel quality (official) ground-tracks of Sentinel-5P

orbits : 19 in [11437, 11482]  
coverage : 2019-12-28 / 2019-12-31  
created : 2023-08-22T08:03:47



# Tropomi SWIR pixel quality (official)

orbits : [2827, 11482]  
coverage : 2018-04-30 / 2019-12-31  
created : 2023-08-22T08:03:47

## trend of pixel quality & temperatures

