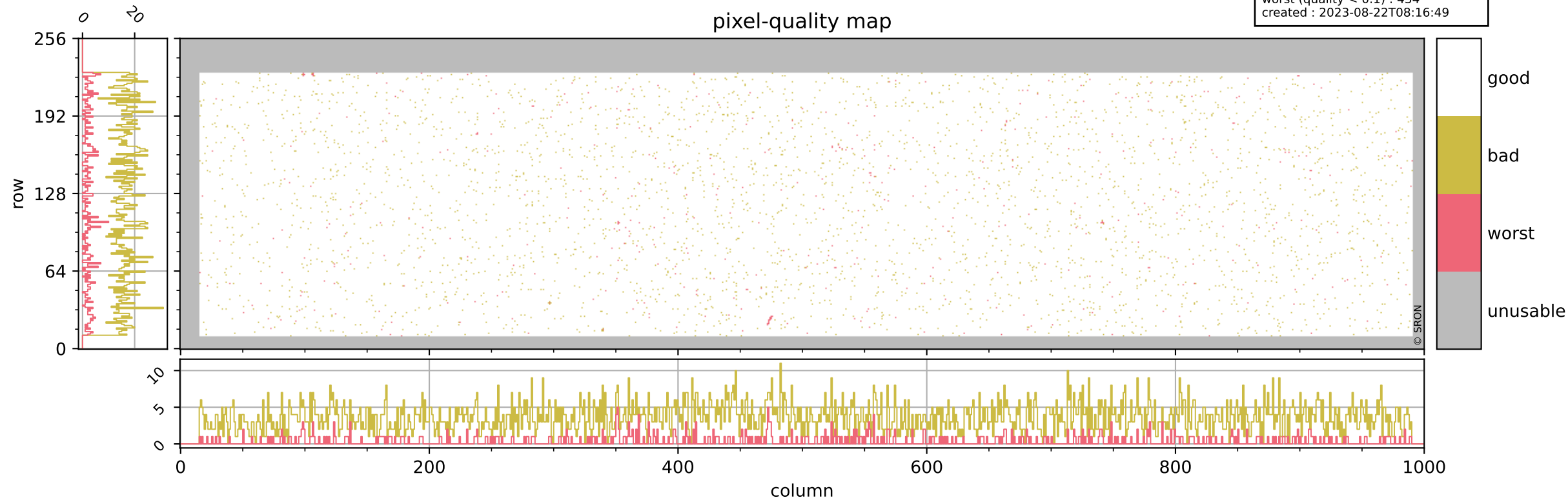


# Tropomi SWIR pixel quality (official)

orbits : 18 in [16687, 16732]  
coverage : 2021-01-01 / 2021-01-04  
bad (quality < 0.8) : 3609  
worst (quality < 0.1) : 434  
created : 2023-08-22T08:16:49

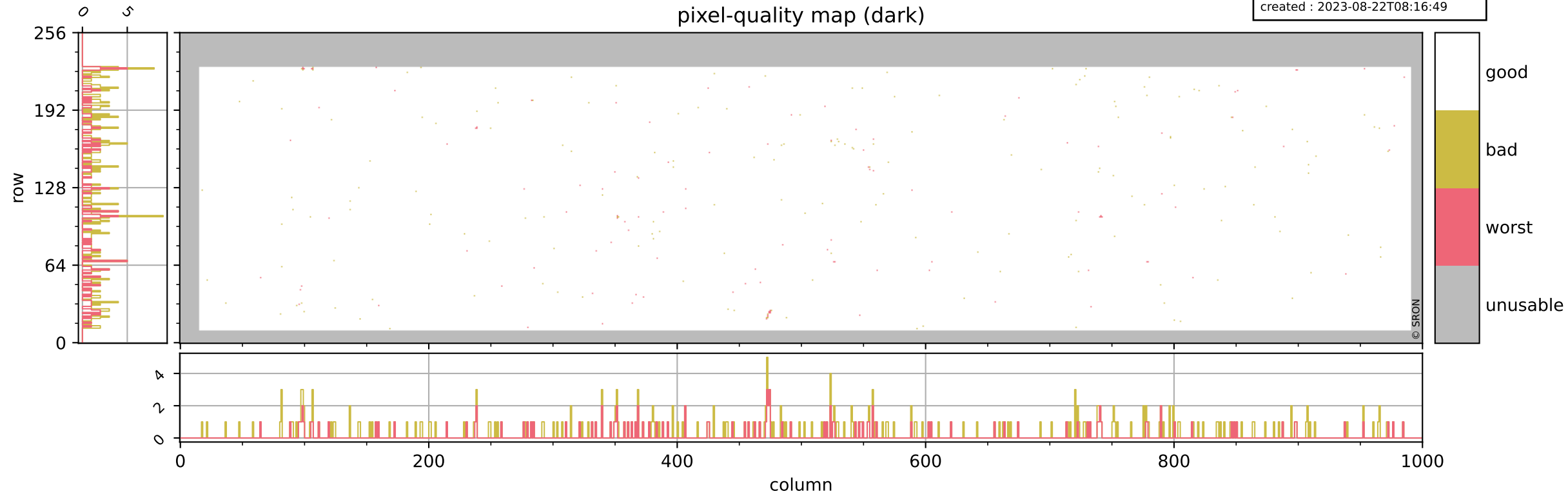
## pixel-quality map



# Tropomi SWIR pixel quality (official)

orbits : 18 in [16687, 16732]  
coverage : 2021-01-01 / 2021-01-04  
bad (quality < 0.8) : 293  
worst (quality < 0.1) : 114  
created : 2023-08-22T08:16:49

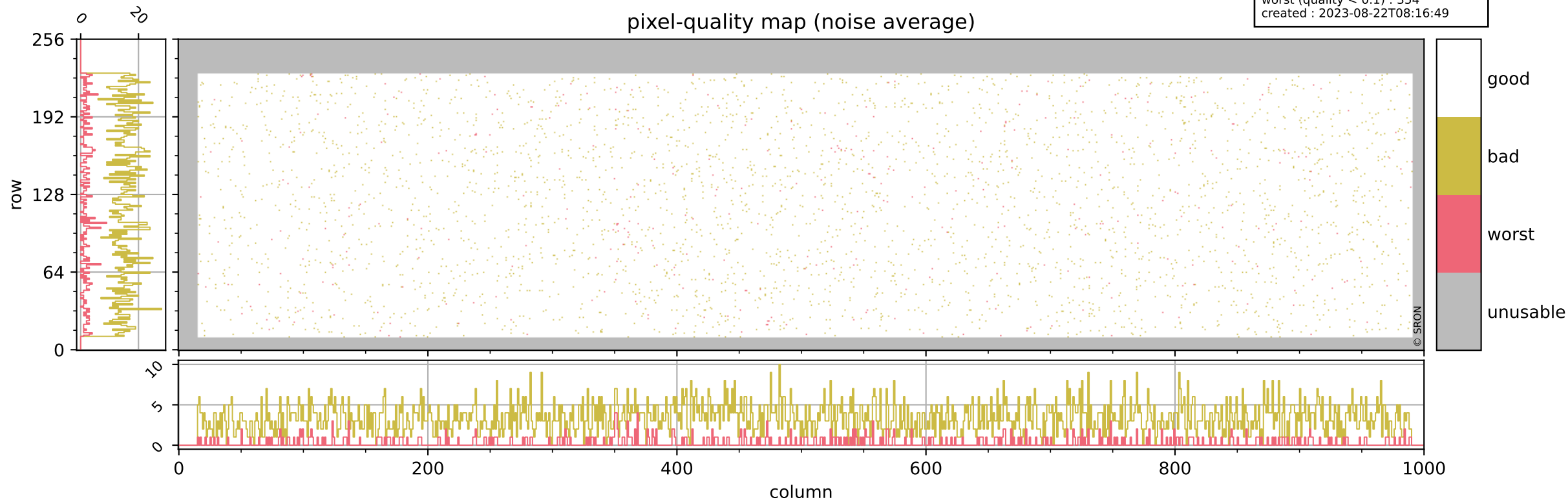
## pixel-quality map (dark)



# Tropomi SWIR pixel quality (official)

orbits : 18 in [16687, 16732]  
coverage : 2021-01-01 / 2021-01-04  
bad (quality < 0.8) : 3364  
worst (quality < 0.1) : 354  
created : 2023-08-22T08:16:49

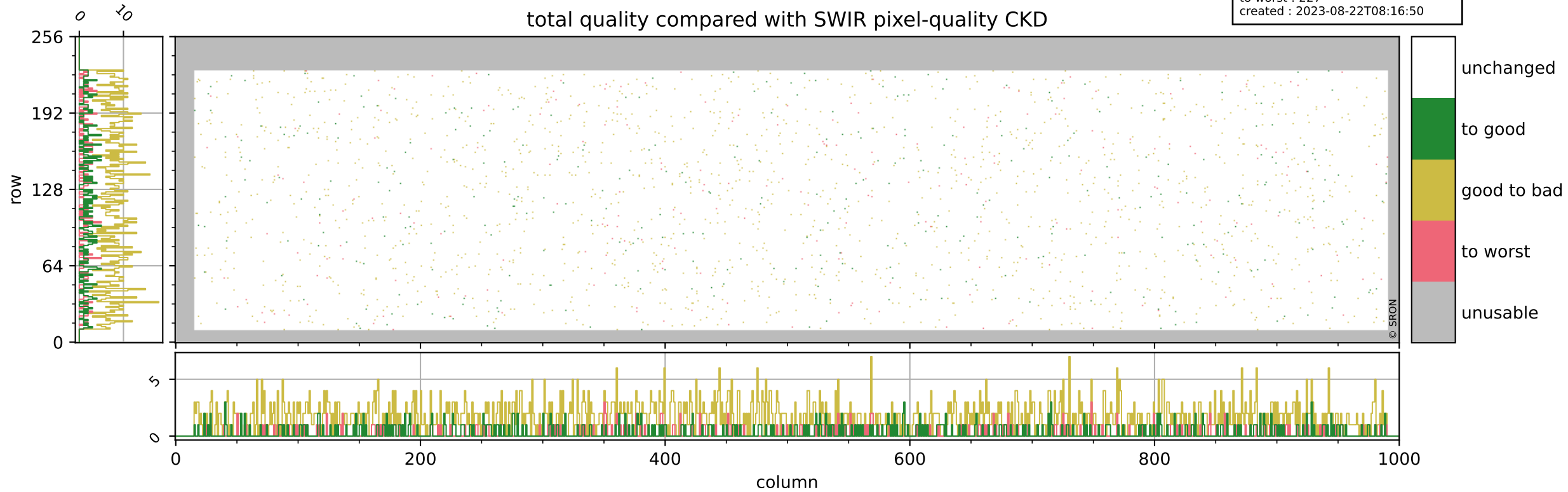
## pixel-quality map (noise average)



# Tropomi SWIR pixel quality (official)

orbits : 18 in [16687, 16732]  
coverage : 2021-01-01 / 2021-01-04  
to good : 346  
good to bad : 1484  
to worst : 227  
created : 2023-08-22T08:16:50

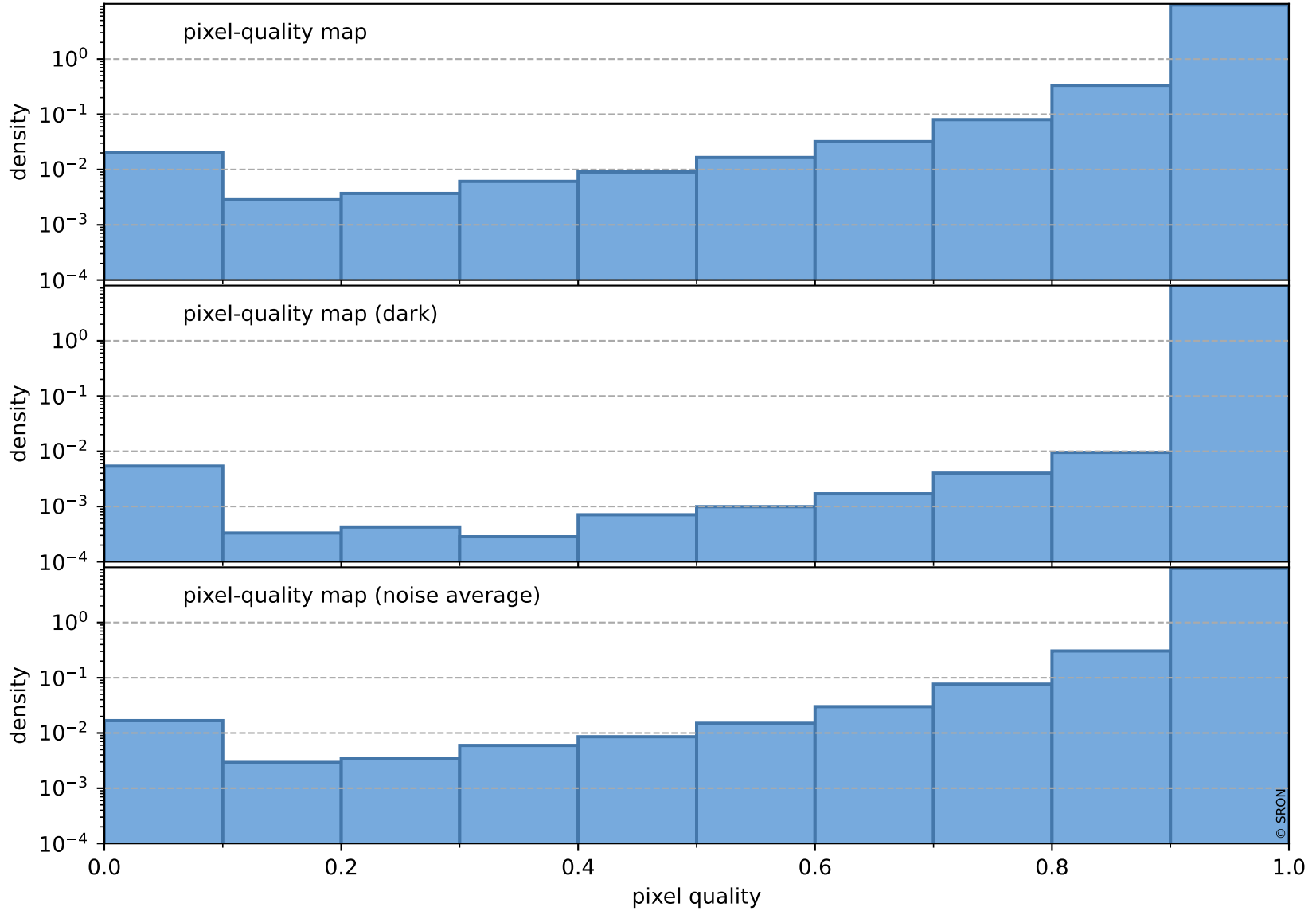
## total quality compared with SWIR pixel-quality CKD



# Tropomi SWIR pixel quality (official)

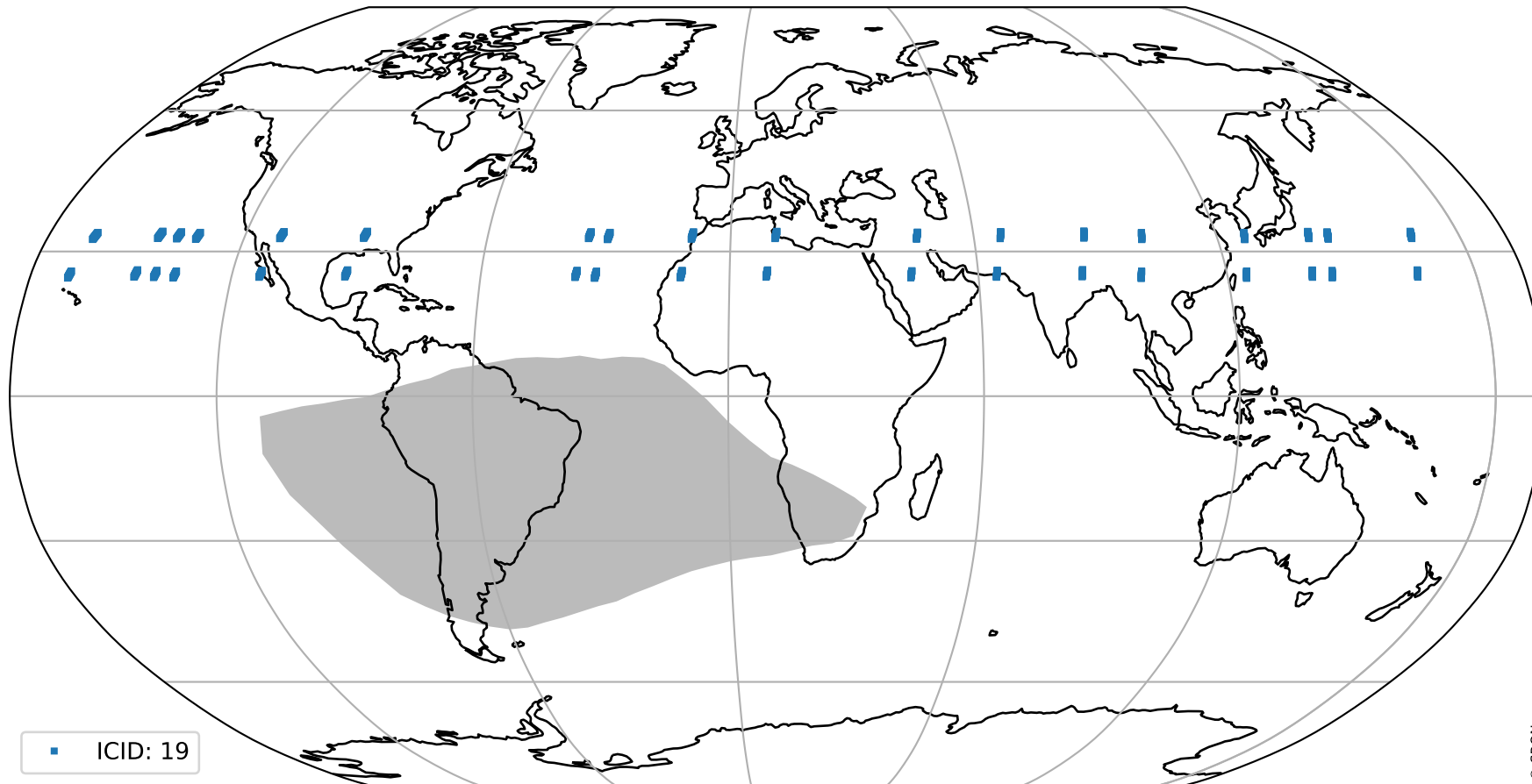
orbits : 18 in [16687, 16732]  
coverage : 2021-01-01 / 2021-01-04  
created : 2023-08-22T08:16:50

## Histograms of pixel-quality



# Tropomi SWIR pixel quality (official) ground-tracks of Sentinel-5P

orbits : 18 in [16687, 16732]  
coverage : 2021-01-01 / 2021-01-04  
created : 2023-08-22T08:16:50



# Tropomi SWIR pixel quality (official)

orbits : [2827, 16732]  
coverage : 2018-04-30 / 2021-01-04  
created : 2023-08-22T08:16:50

## trend of pixel quality & temperatures

