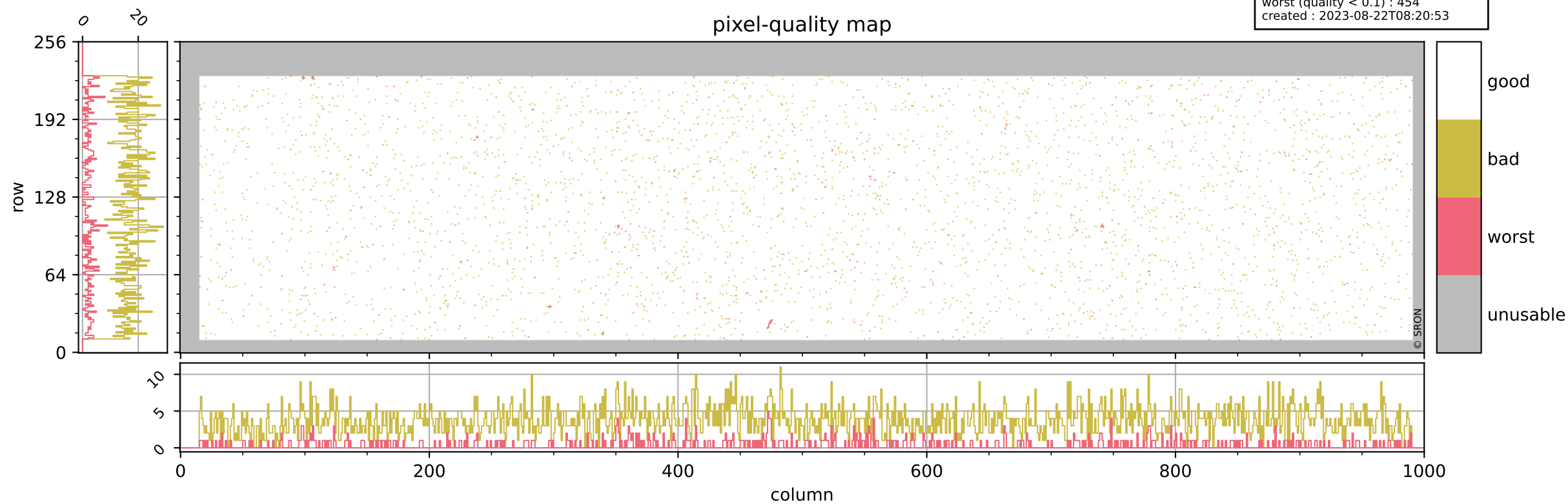


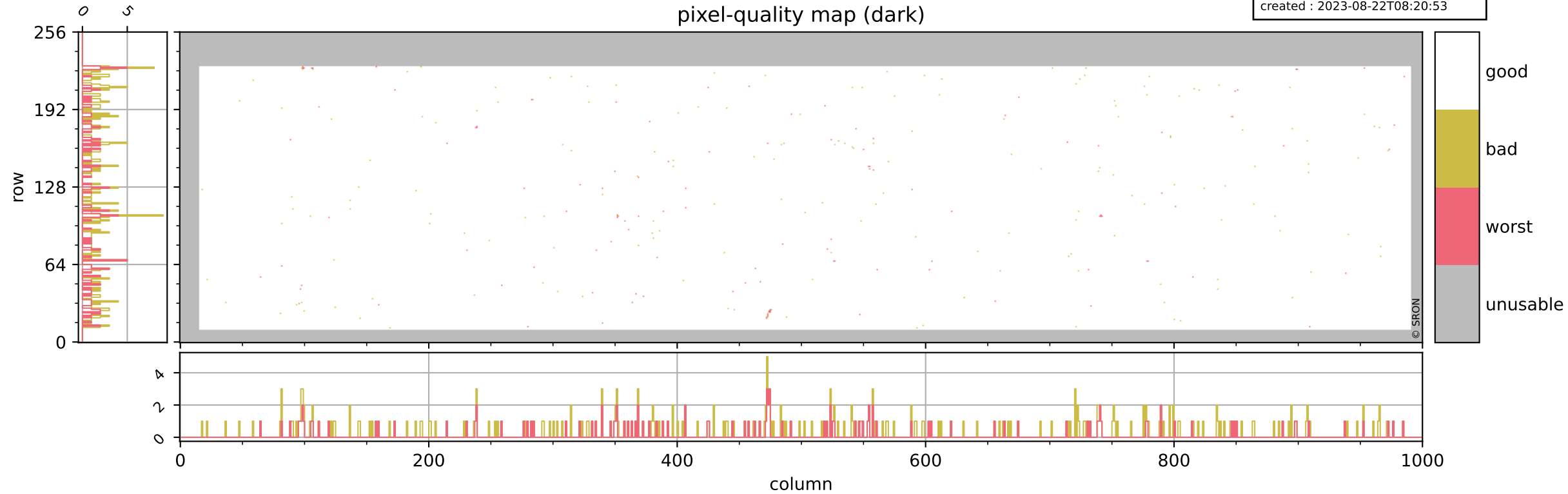
Tropomi SWIR pixel quality (official)

orbits : 20 in [18262, 18307]
coverage : 2021-04-22 / 2021-04-25
bad (quality < 0.8) : 3745
worst (quality < 0.1) : 454
created : 2023-08-22T08:20:53



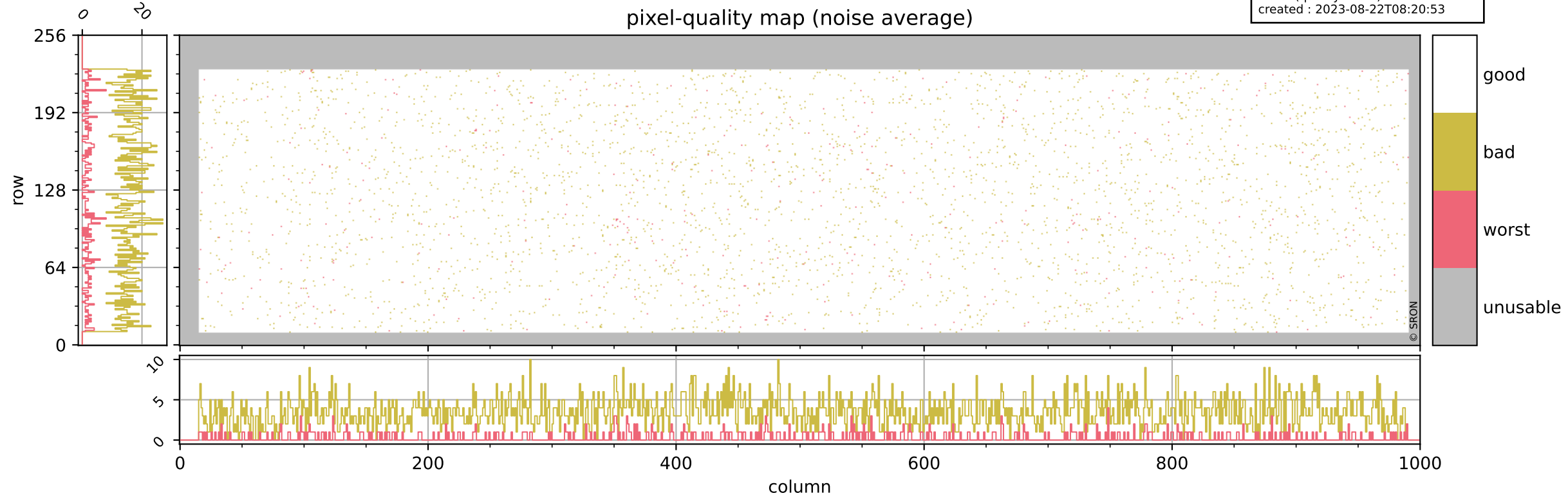
Tropomi SWIR pixel quality (official)

orbits : 20 in [18262, 18307]
coverage : 2021-04-22 / 2021-04-25
bad (quality < 0.8) : 295
worst (quality < 0.1) : 116
created : 2023-08-22T08:20:53



Tropomi SWIR pixel quality (official)

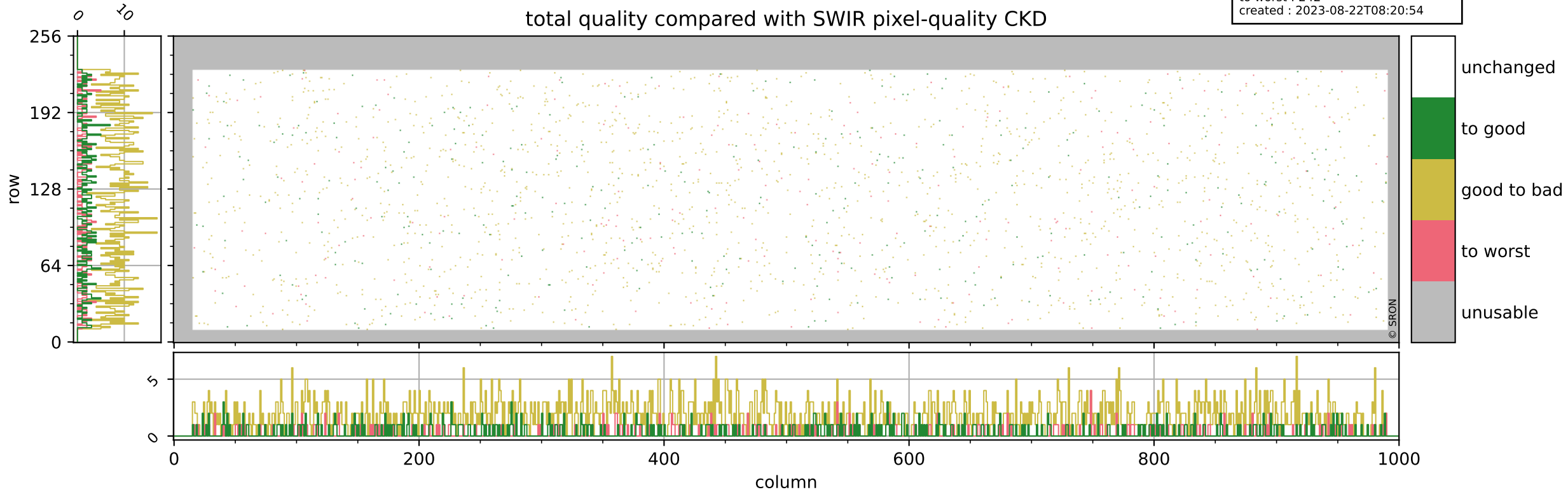
orbits : 20 in [18262, 18307]
coverage : 2021-04-22 / 2021-04-25
bad (quality < 0.8) : 3490
worst (quality < 0.1) : 375
created : 2023-08-22T08:20:53



Tropomi SWIR pixel quality (official)

orbits : 20 in [18262, 18307]
coverage : 2021-04-22 / 2021-04-25
to good : 360
good to bad : 1613
to worst : 242
created : 2023-08-22T08:20:54

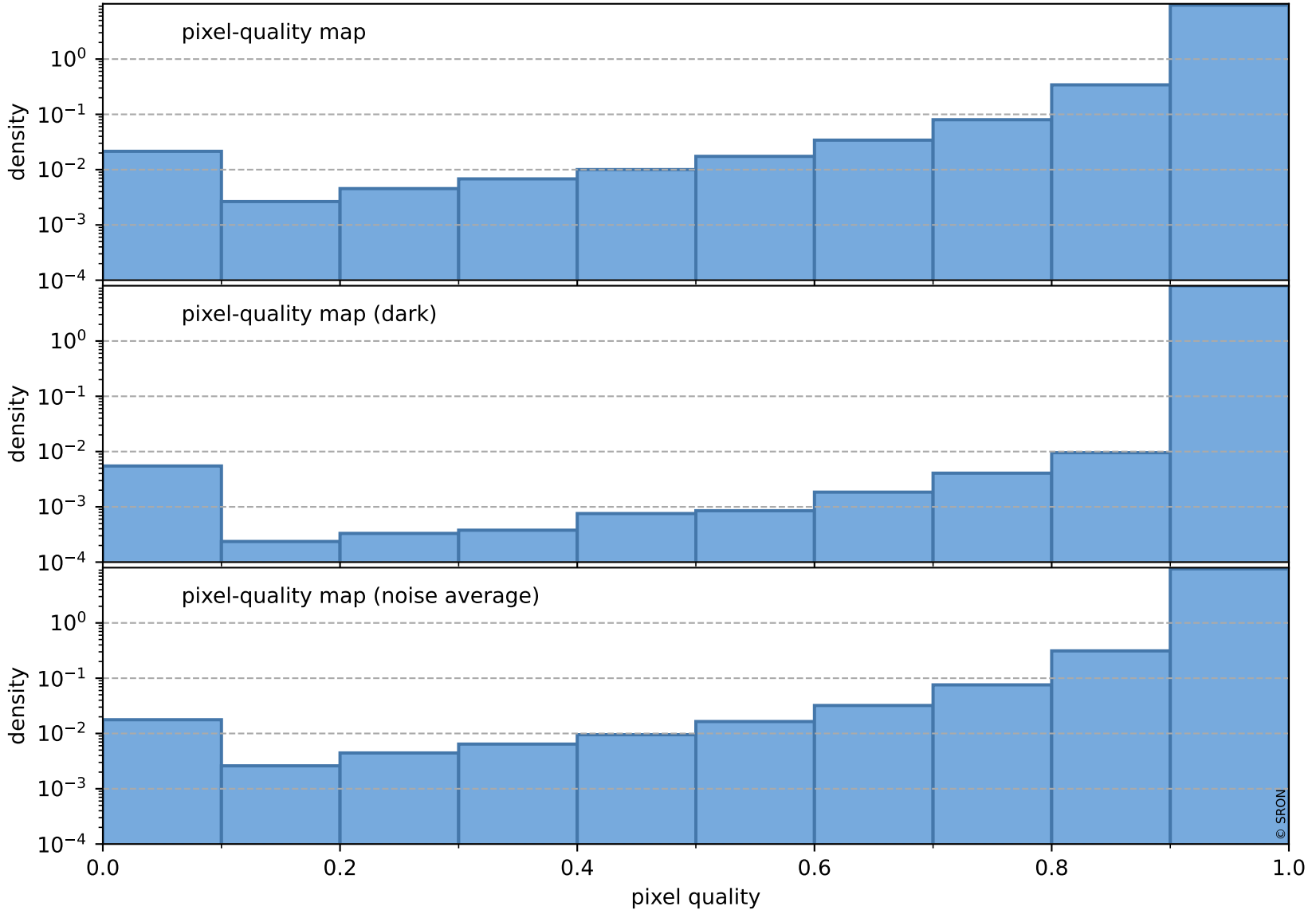
total quality compared with SWIR pixel-quality CKD



Tropomi SWIR pixel quality (official)

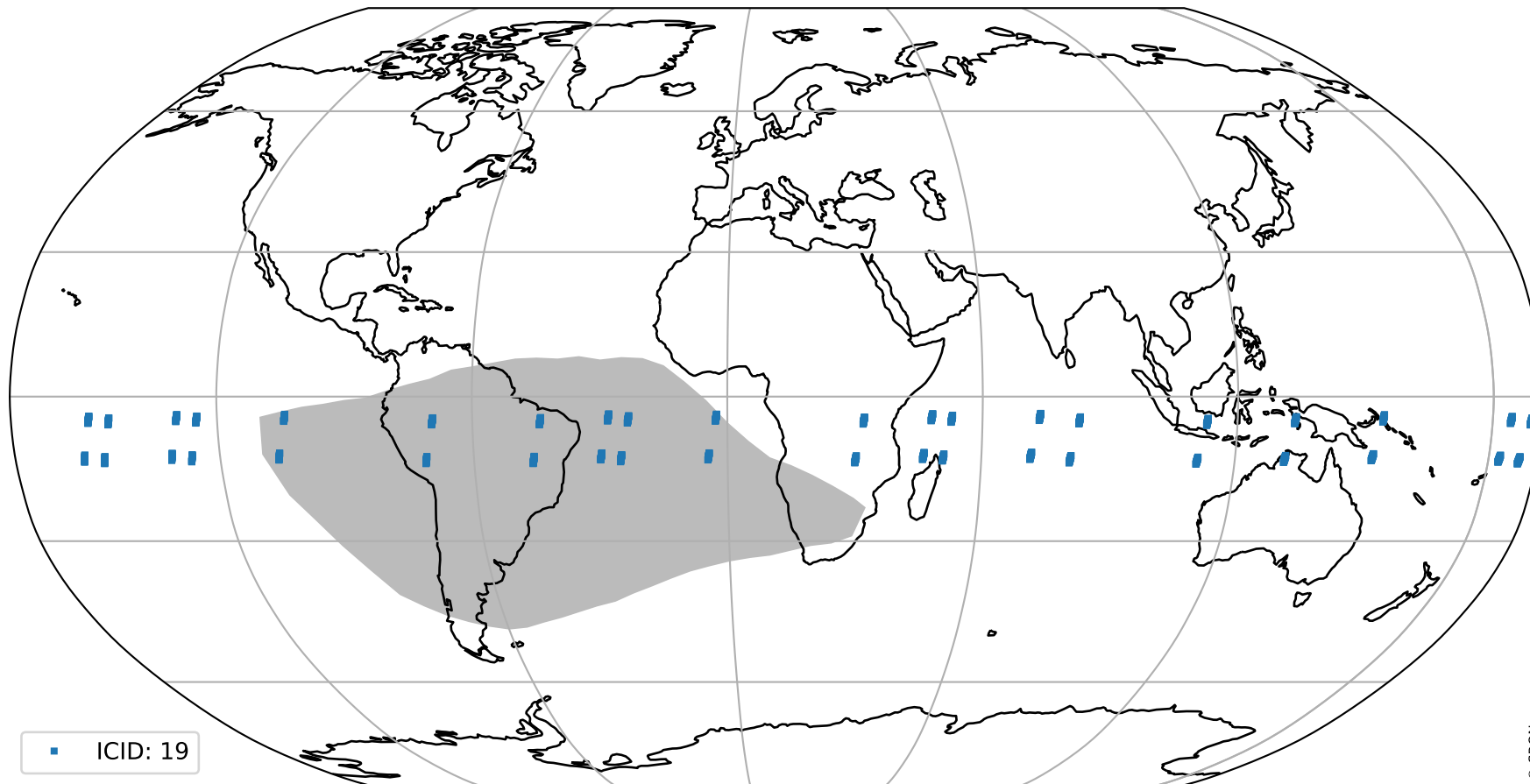
orbits : 20 in [18262, 18307]
coverage : 2021-04-22 / 2021-04-25
created : 2023-08-22T08:20:54

Histograms of pixel-quality



Tropomi SWIR pixel quality (official) ground-tracks of Sentinel-5P

orbits : 20 in [18262, 18307]
coverage : 2021-04-22 / 2021-04-25
created : 2023-08-22T08:20:54



Tropomi SWIR pixel quality (official)

orbits : [2827, 18307]
coverage : 2018-04-30 / 2021-04-25
created : 2023-08-22T08:20:55

trend of pixel quality & temperatures

