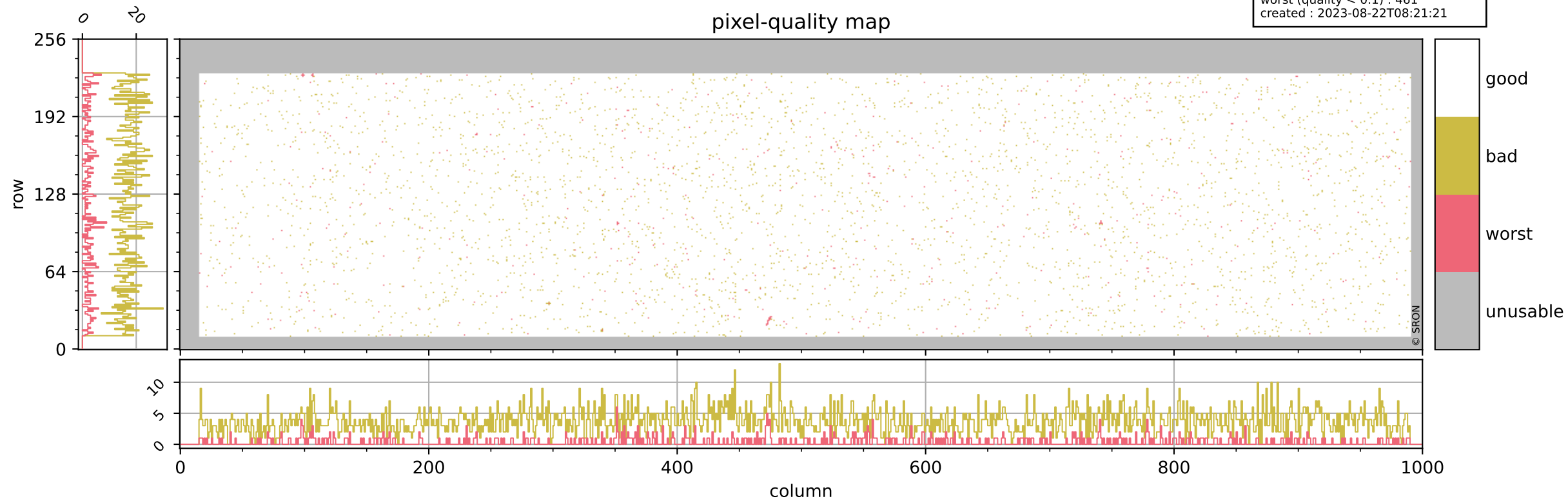


# Tropomi SWIR pixel quality (official)

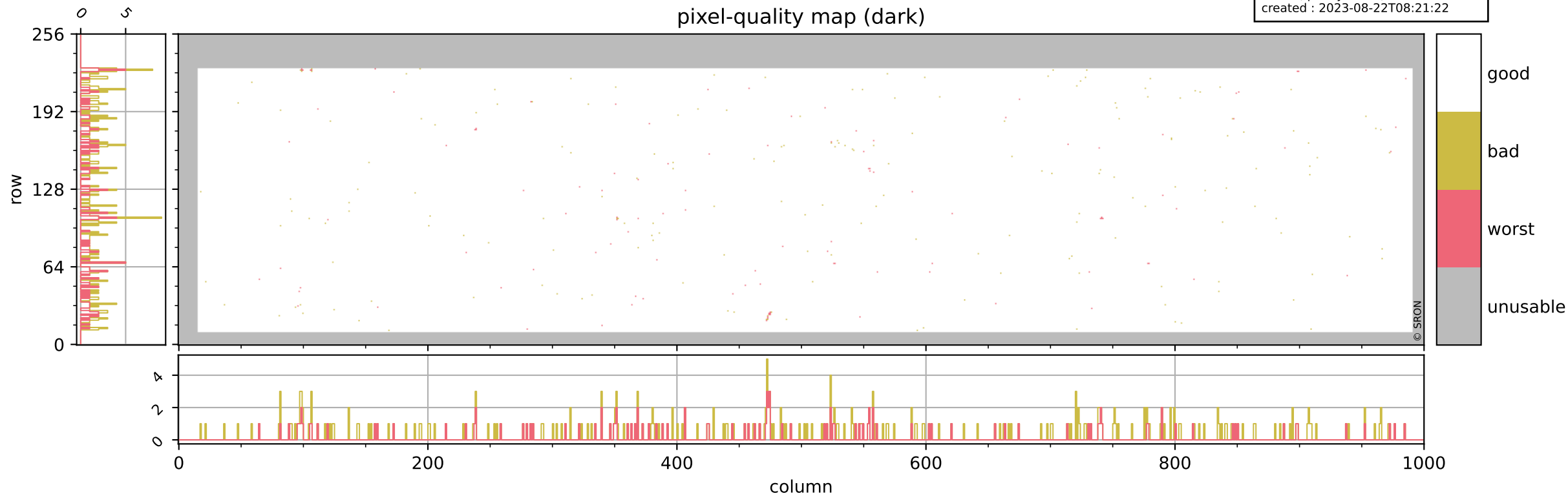
orbits : 20 in [18442, 18487]  
coverage : 2021-05-05 / 2021-05-08  
bad (quality < 0.8) : 3729  
worst (quality < 0.1) : 461  
created : 2023-08-22T08:21:21



# Tropomi SWIR pixel quality (official)

orbits : 20 in [18442, 18487]  
coverage : 2021-05-05 / 2021-05-08  
bad (quality < 0.8) : 299  
worst (quality < 0.1) : 113  
created : 2023-08-22T08:21:22

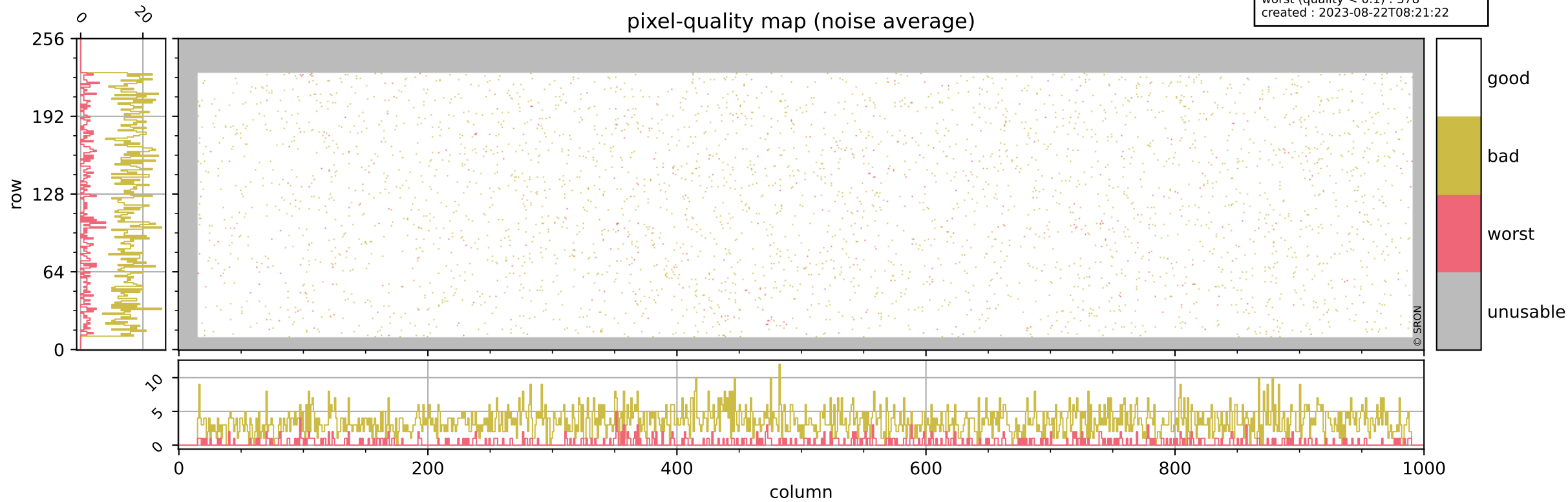
## pixel-quality map (dark)



# Tropomi SWIR pixel quality (official)

orbits : 20 in [18442, 18487]  
coverage : 2021-05-05 / 2021-05-08  
bad (quality < 0.8) : 3481  
worst (quality < 0.1) : 378  
created : 2023-08-22T08:21:22

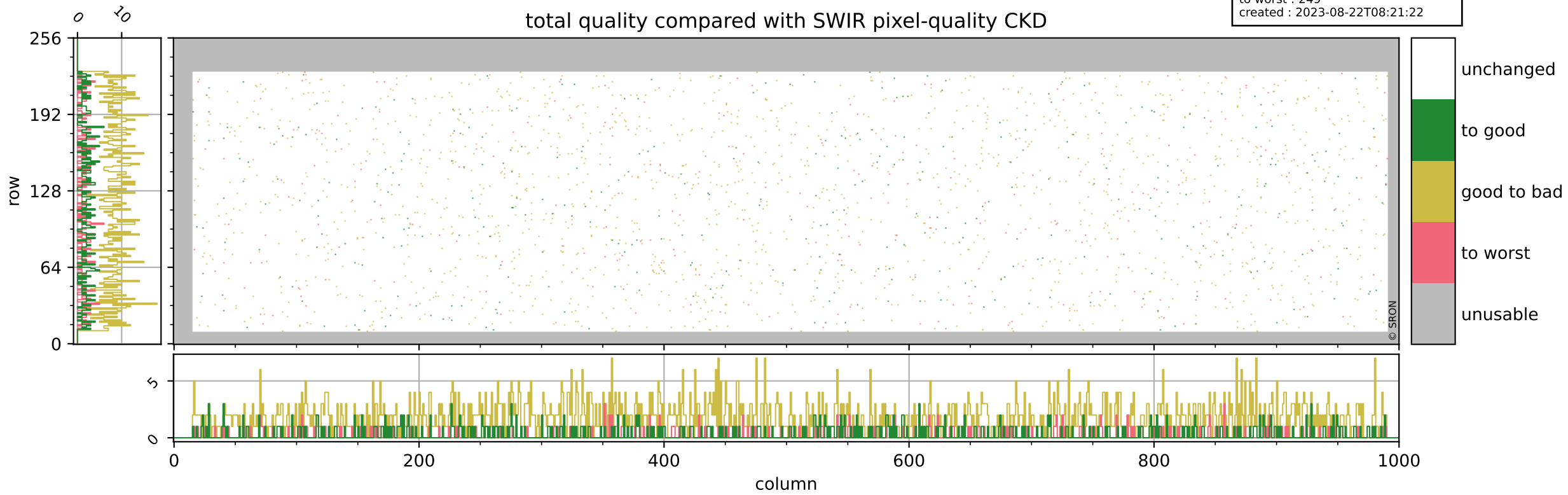
## pixel-quality map (noise average)



# Tropomi SWIR pixel quality (official)

orbits : 20 in [18442, 18487]  
coverage : 2021-05-05 / 2021-05-08  
to good : 367  
good to bad : 1599  
to worst : 249  
created : 2023-08-22T08:21:22

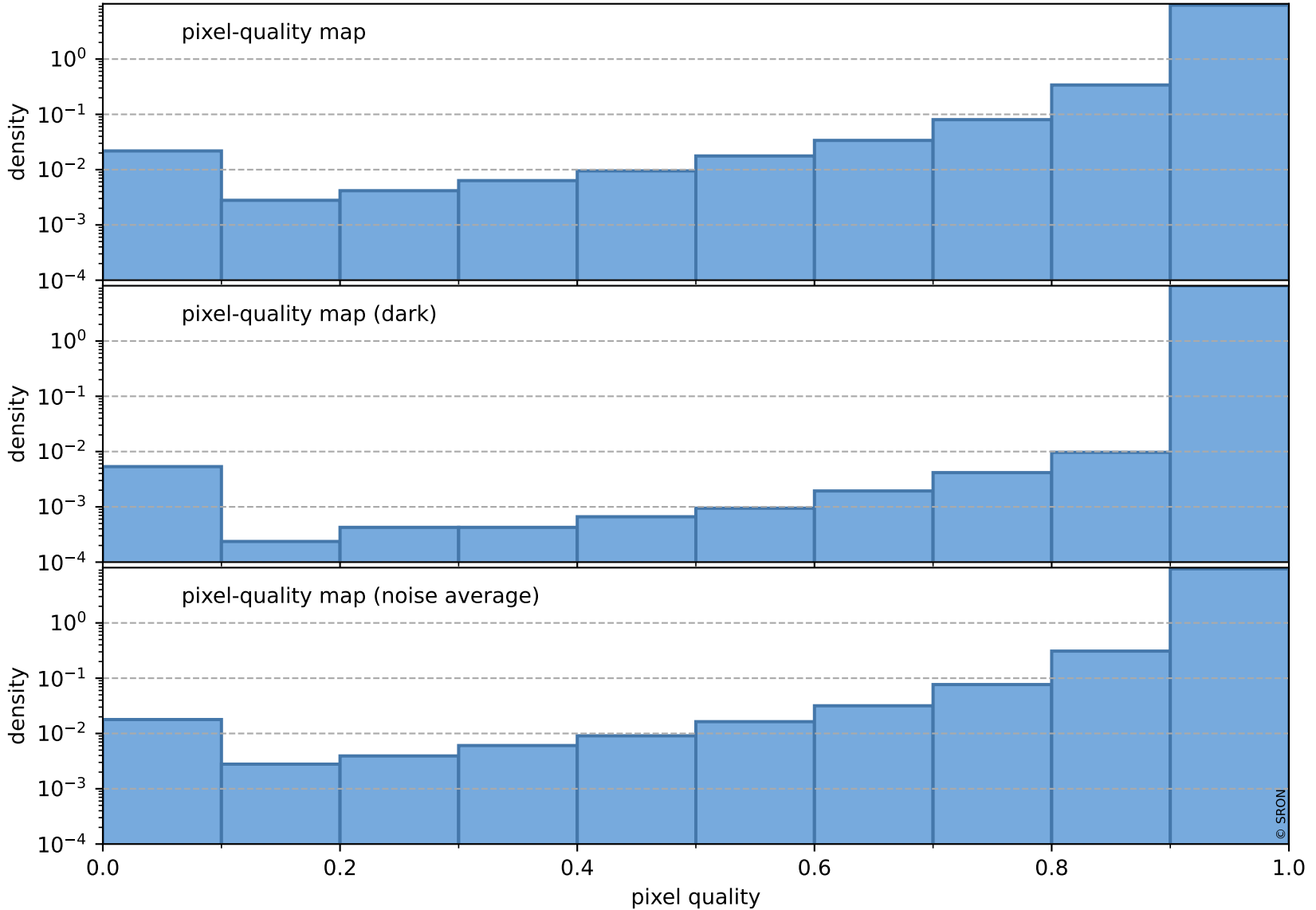
## total quality compared with SWIR pixel-quality CKD



# Tropomi SWIR pixel quality (official)

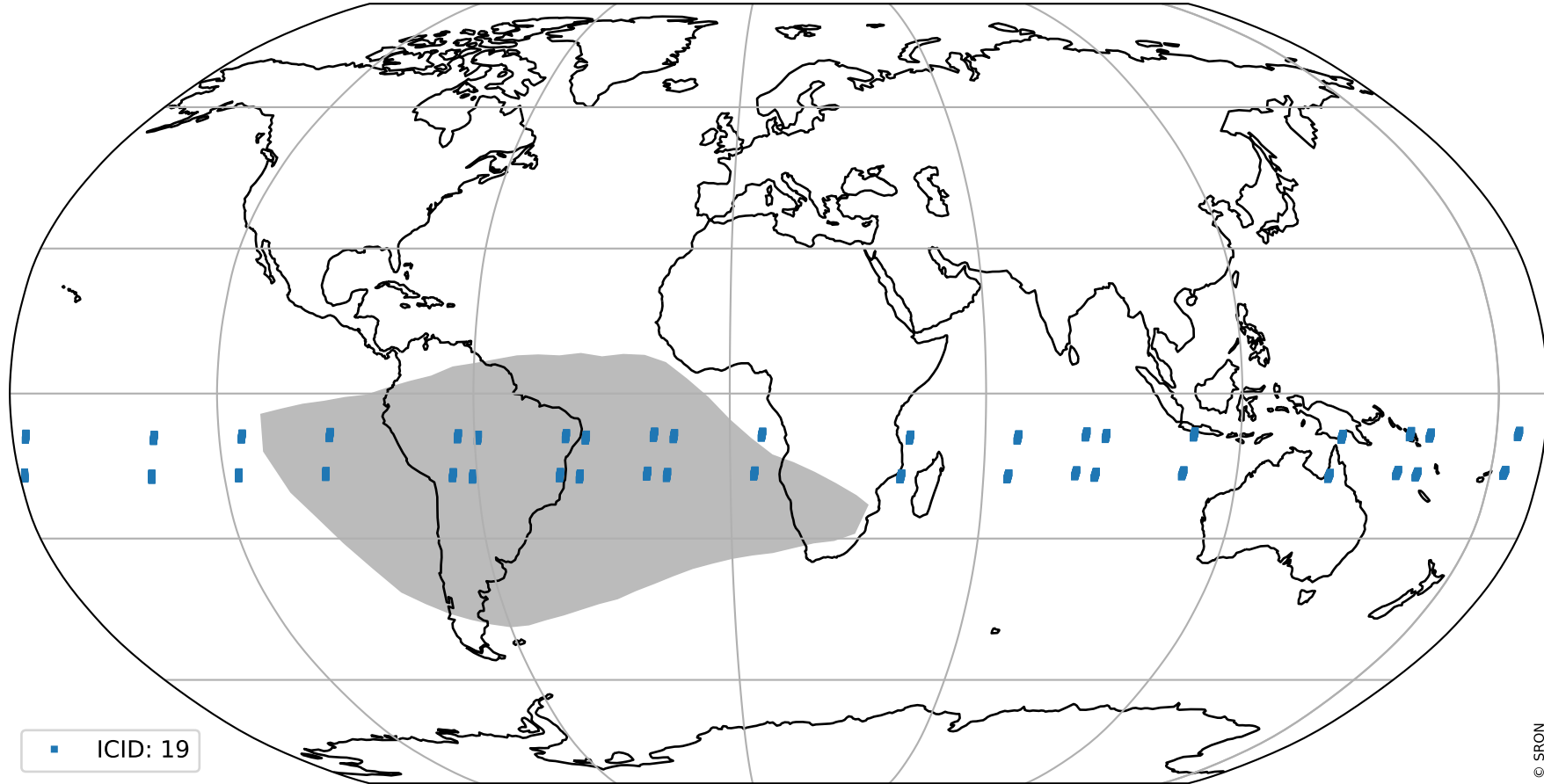
orbits : 20 in [18442, 18487]  
coverage : 2021-05-05 / 2021-05-08  
created : 2023-08-22T08:21:22

## Histograms of pixel-quality



# Tropomi SWIR pixel quality (official) ground-tracks of Sentinel-5P

orbits : 20 in [18442, 18487]  
coverage : 2021-05-05 / 2021-05-08  
created : 2023-08-22T08:21:23



# Tropomi SWIR pixel quality (official)

orbits : [2827, 18487]  
coverage : 2018-04-30 / 2021-05-08  
created : 2023-08-22T08:21:23

## trend of pixel quality & temperatures

