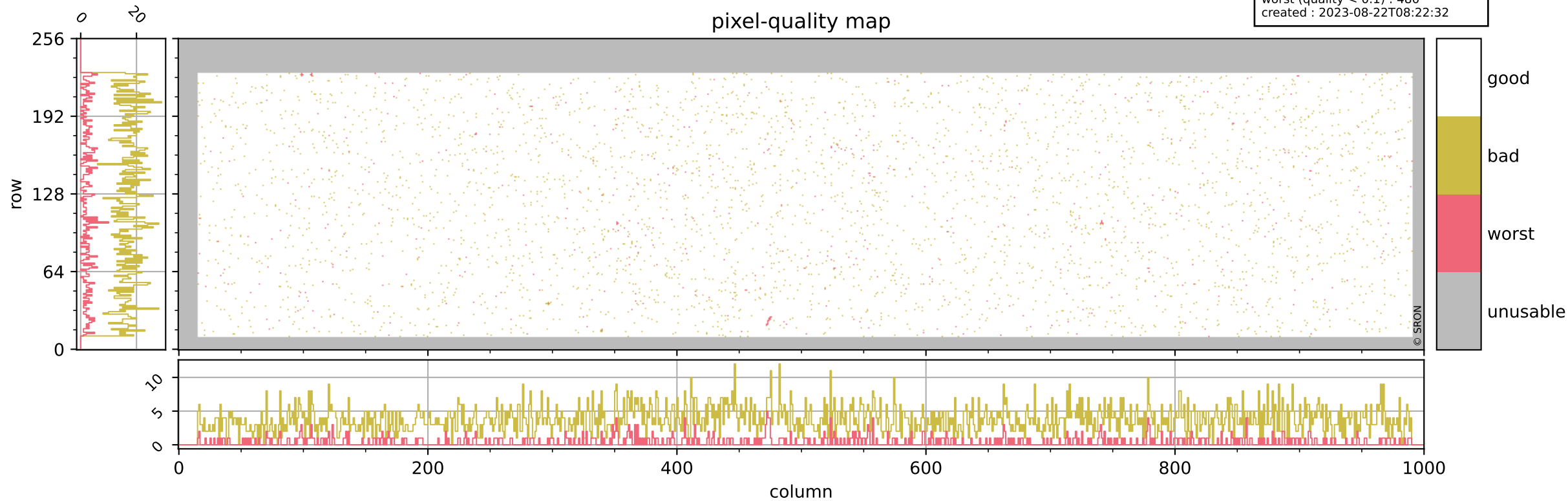


# Tropomi SWIR pixel quality (official)

orbits : 20 in [18892, 18937]  
coverage : 2021-06-06 / 2021-06-09  
bad (quality < 0.8) : 3760  
worst (quality < 0.1) : 480  
created : 2023-08-22T08:22:32

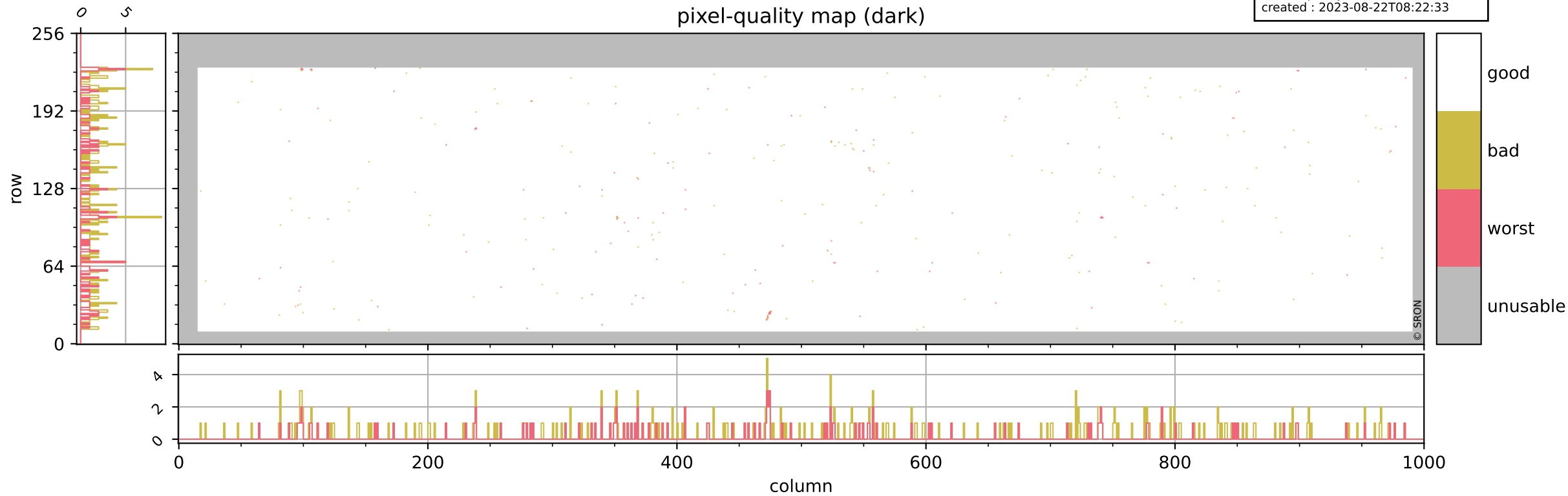
## pixel-quality map



# Tropomi SWIR pixel quality (official)

orbits : 20 in [18892, 18937]  
coverage : 2021-06-06 / 2021-06-09  
bad (quality < 0.8) : 298  
worst (quality < 0.1) : 114  
created : 2023-08-22T08:22:33

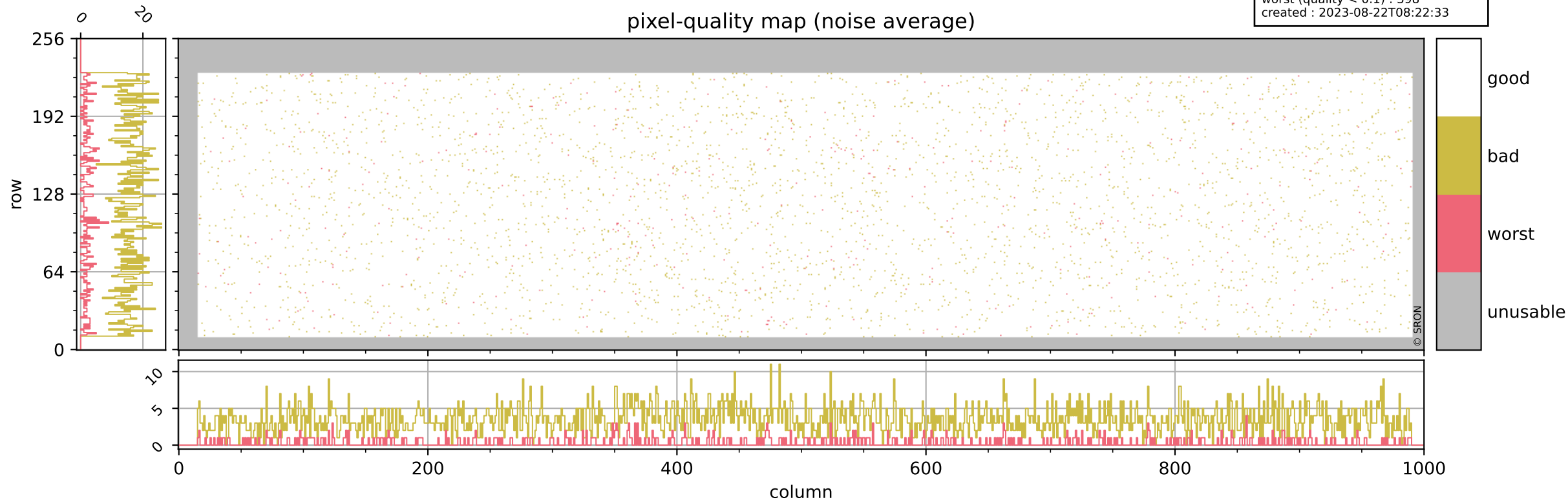
## pixel-quality map (dark)



# Tropomi SWIR pixel quality (official)

orbits : 20 in [18892, 18937]  
coverage : 2021-06-06 / 2021-06-09  
bad (quality < 0.8) : 3502  
worst (quality < 0.1) : 398  
created : 2023-08-22T08:22:33

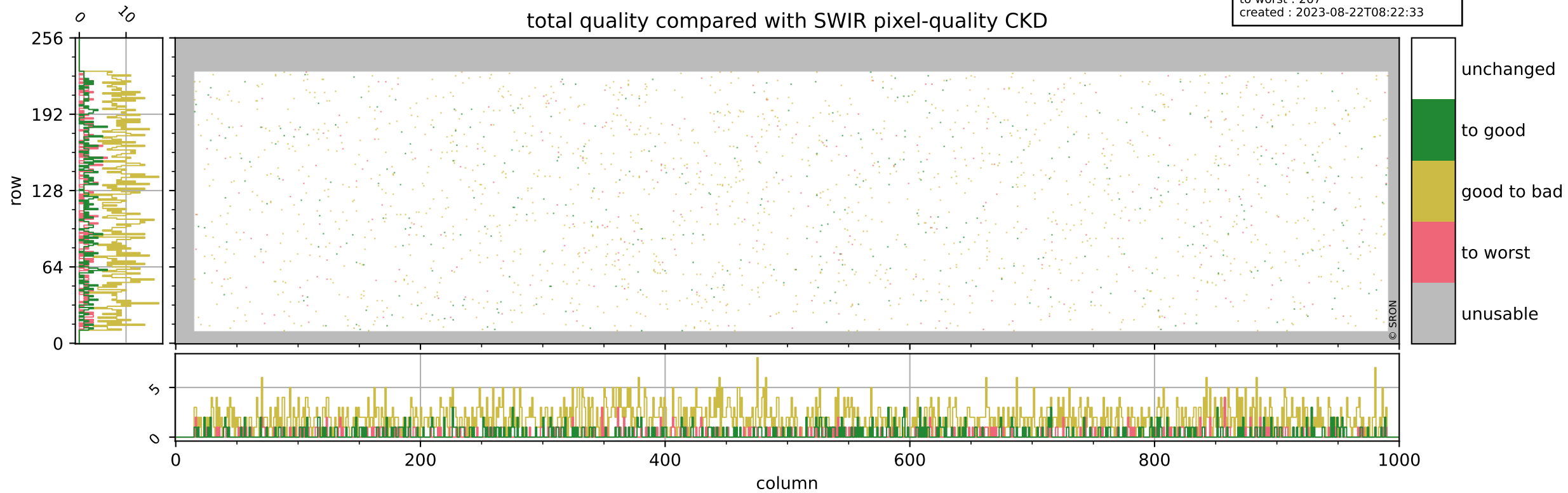
## pixel-quality map (noise average)



# Tropomi SWIR pixel quality (official)

orbits : 20 in [18892, 18937]  
coverage : 2021-06-06 / 2021-06-09  
to good : 357  
good to bad : 1607  
to worst : 267  
created : 2023-08-22T08:22:33

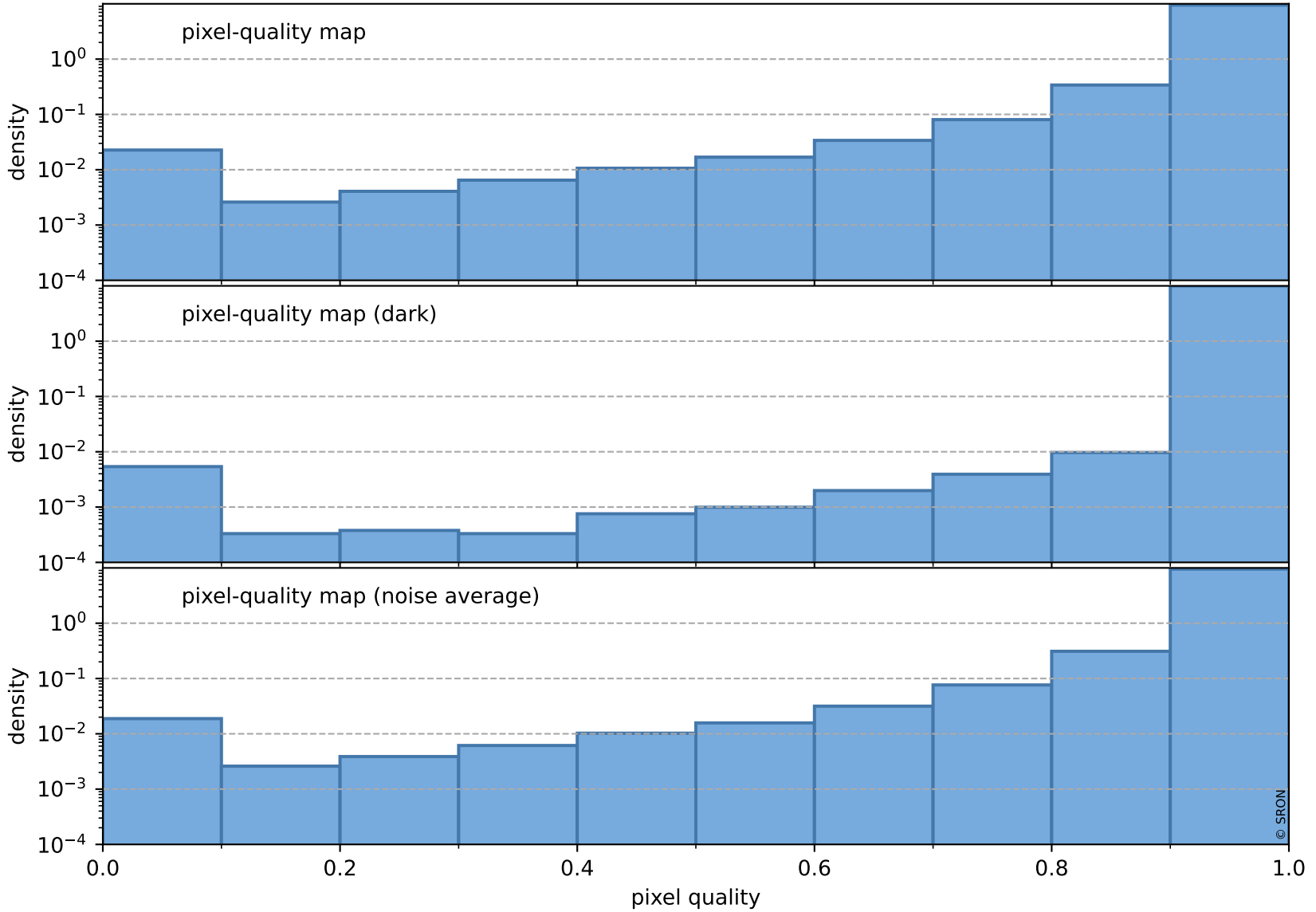
## total quality compared with SWIR pixel-quality CKD



# Tropomi SWIR pixel quality (official)

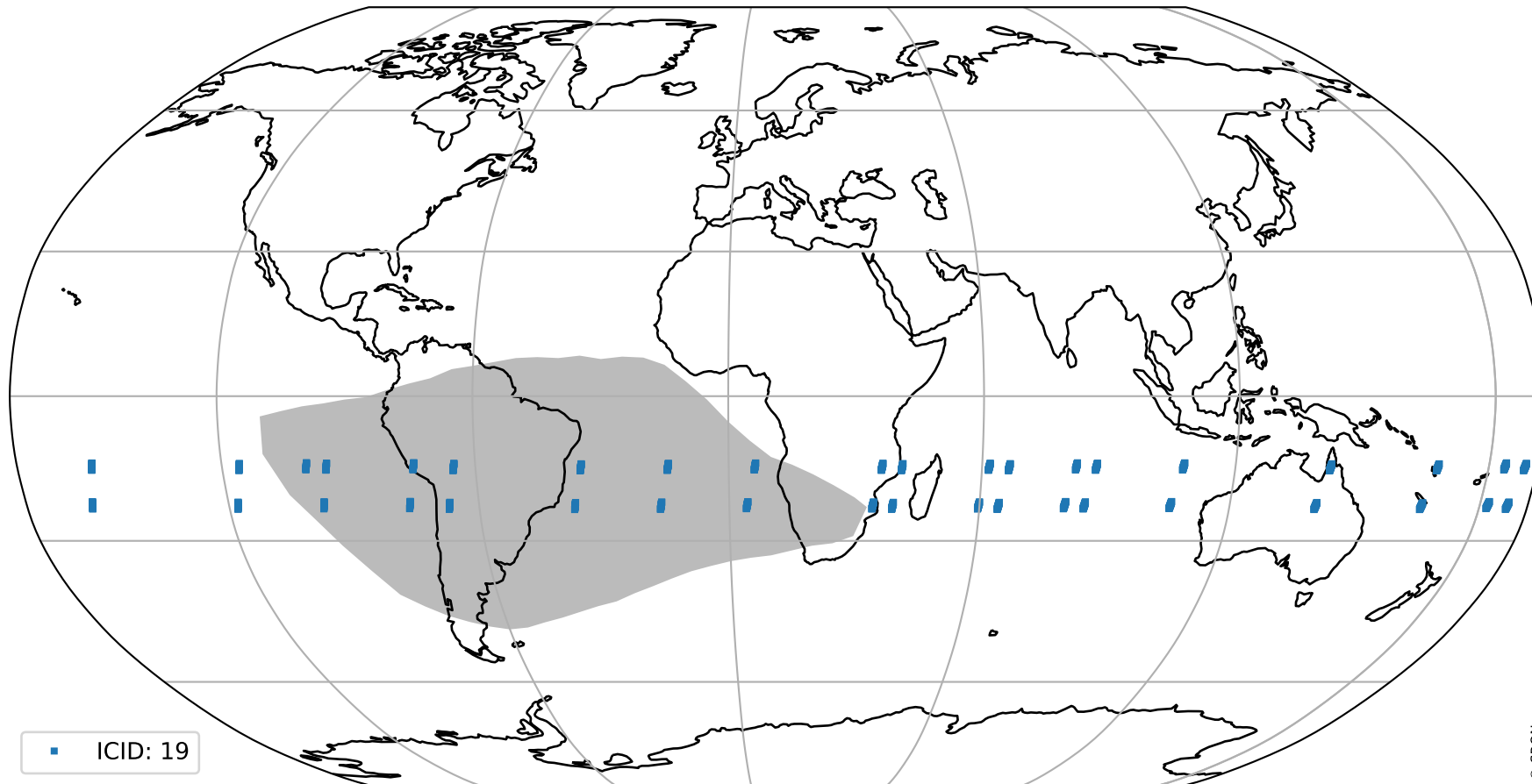
orbits : 20 in [18892, 18937]  
coverage : 2021-06-06 / 2021-06-09  
created : 2023-08-22T08:22:33

## Histograms of pixel-quality



# Tropomi SWIR pixel quality (official) ground-tracks of Sentinel-5P

orbits : 20 in [18892, 18937]  
coverage : 2021-06-06 / 2021-06-09  
created : 2023-08-22T08:22:34



# Tropomi SWIR pixel quality (official)

orbits : [2827, 18937]  
coverage : 2018-04-30 / 2021-06-09  
created : 2023-08-22T08:22:34

## trend of pixel quality & temperatures

