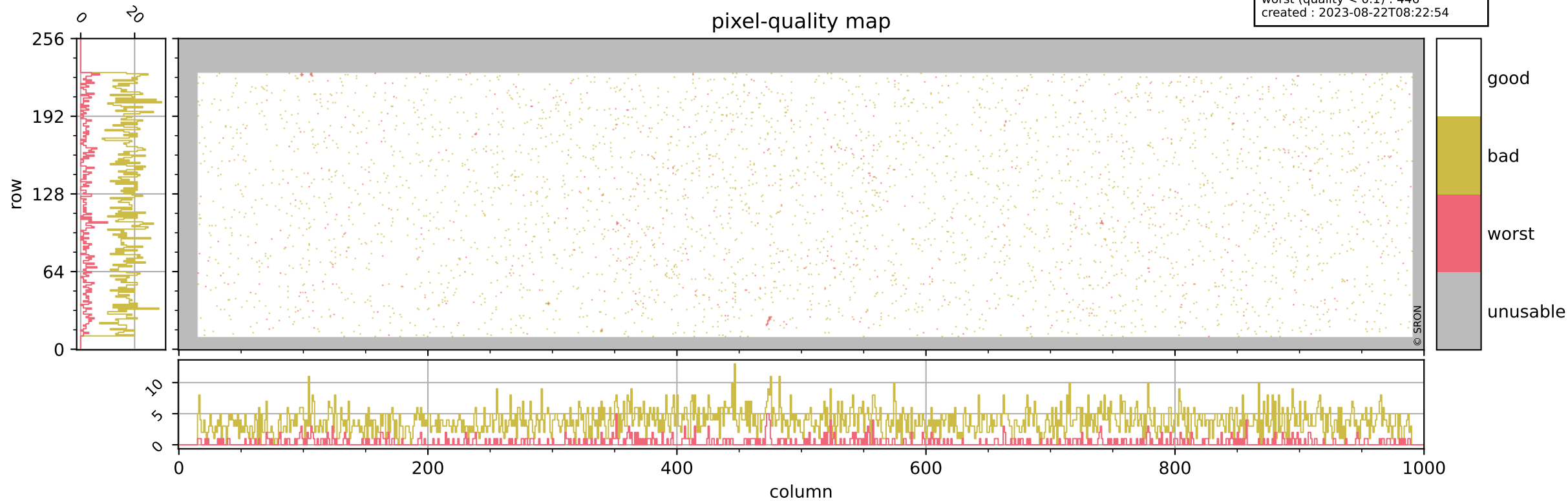


# Tropomi SWIR pixel quality (official)

orbits : 18 in [19027, 19072]  
coverage : 2021-06-15 / 2021-06-18  
bad (quality < 0.8) : 3755  
worst (quality < 0.1) : 446  
created : 2023-08-22T08:22:54

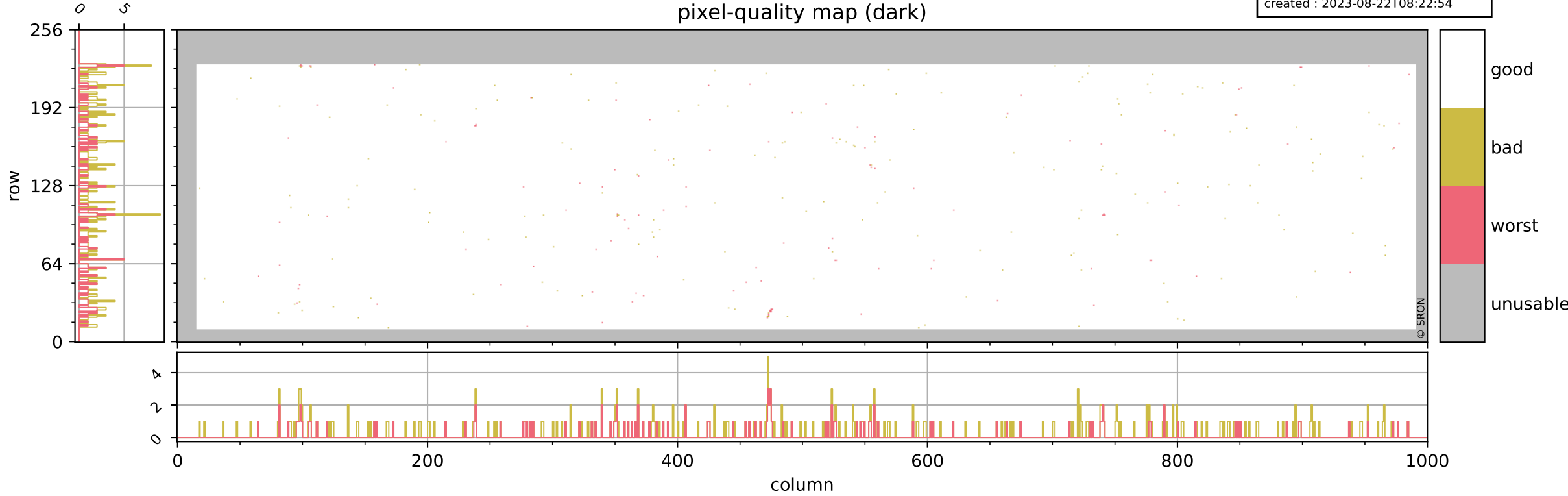
## pixel-quality map



# Tropomi SWIR pixel quality (official)

orbits : 18 in [19027, 19072]  
coverage : 2021-06-15 / 2021-06-18  
bad (quality < 0.8) : 297  
worst (quality < 0.1) : 116  
created : 2023-08-22T08:22:54

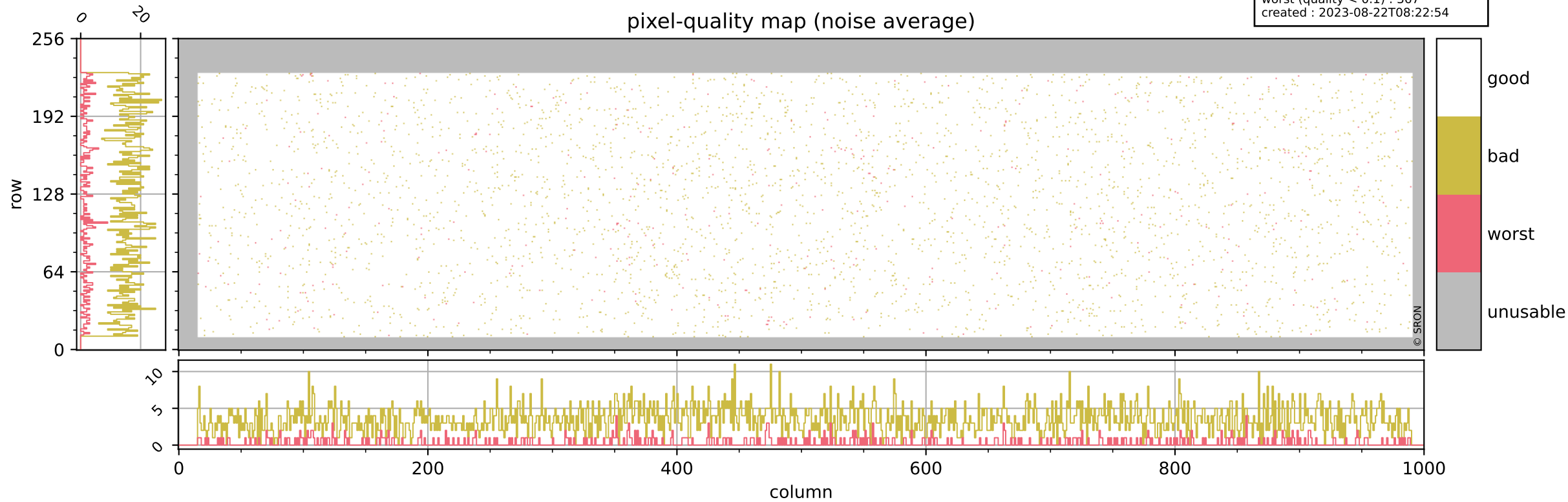
## pixel-quality map (dark)



# Tropomi SWIR pixel quality (official)

orbits : 18 in [19027, 19072]  
coverage : 2021-06-15 / 2021-06-18  
bad (quality < 0.8) : 3502  
worst (quality < 0.1) : 367  
created : 2023-08-22T08:22:54

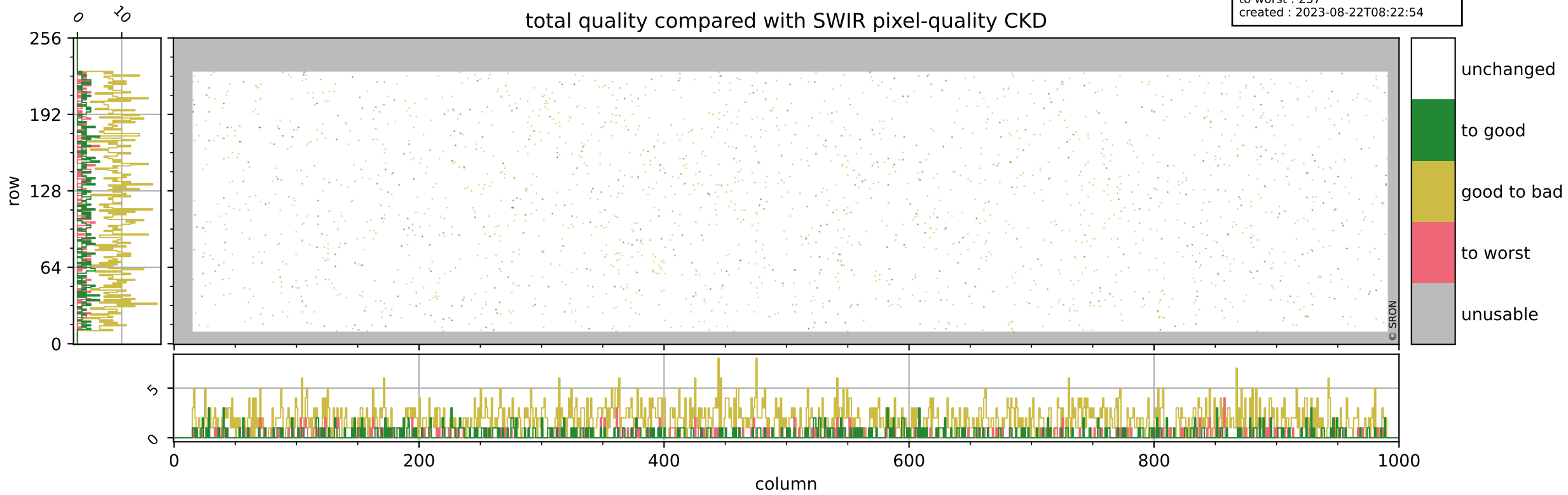
## pixel-quality map (noise average)



# Tropomi SWIR pixel quality (official)

orbits : 18 in [19027, 19072]  
coverage : 2021-06-15 / 2021-06-18  
to good : 346  
good to bad : 1613  
to worst : 237  
created : 2023-08-22T08:22:54

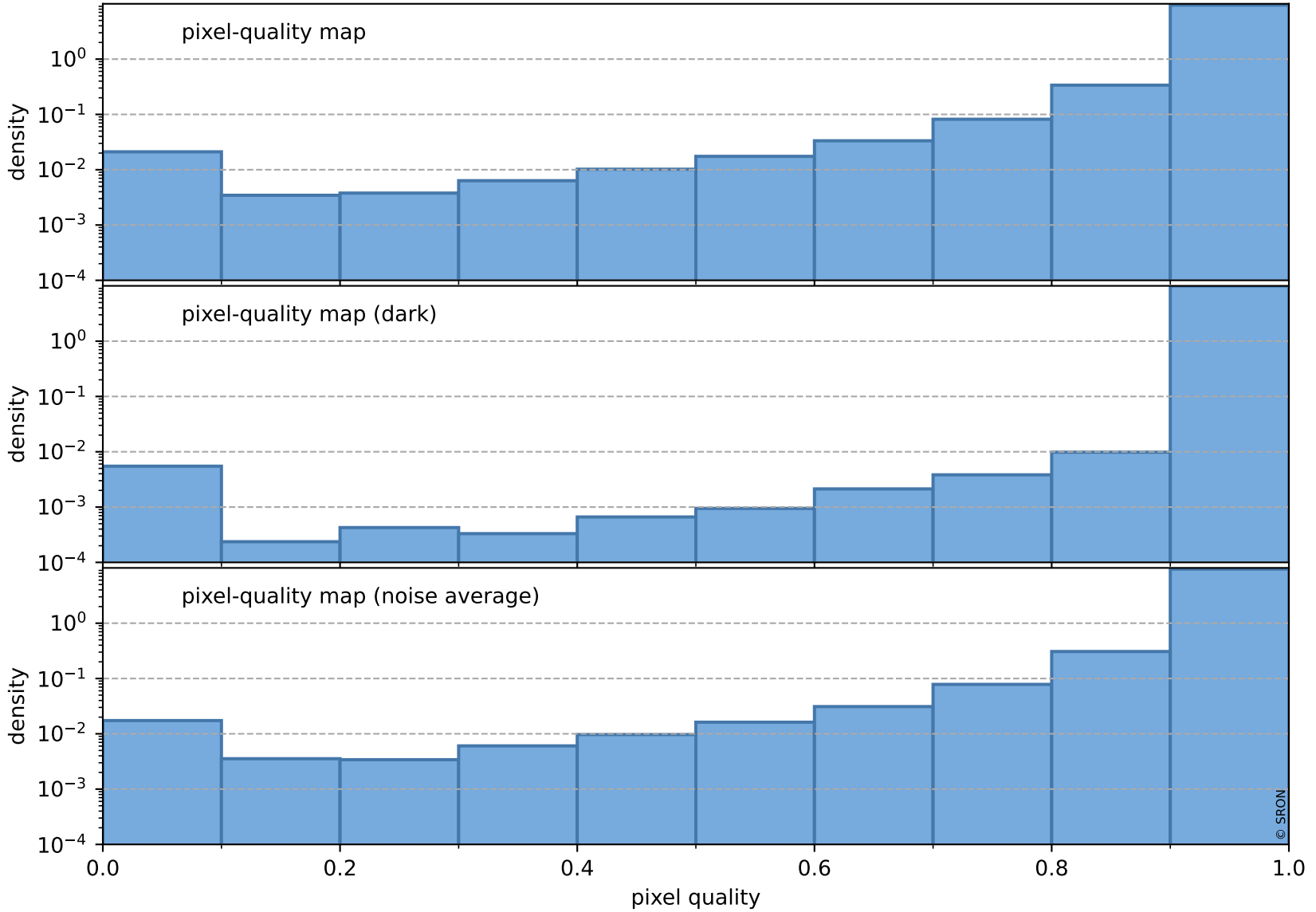
## total quality compared with SWIR pixel-quality CKD



# Tropomi SWIR pixel quality (official)

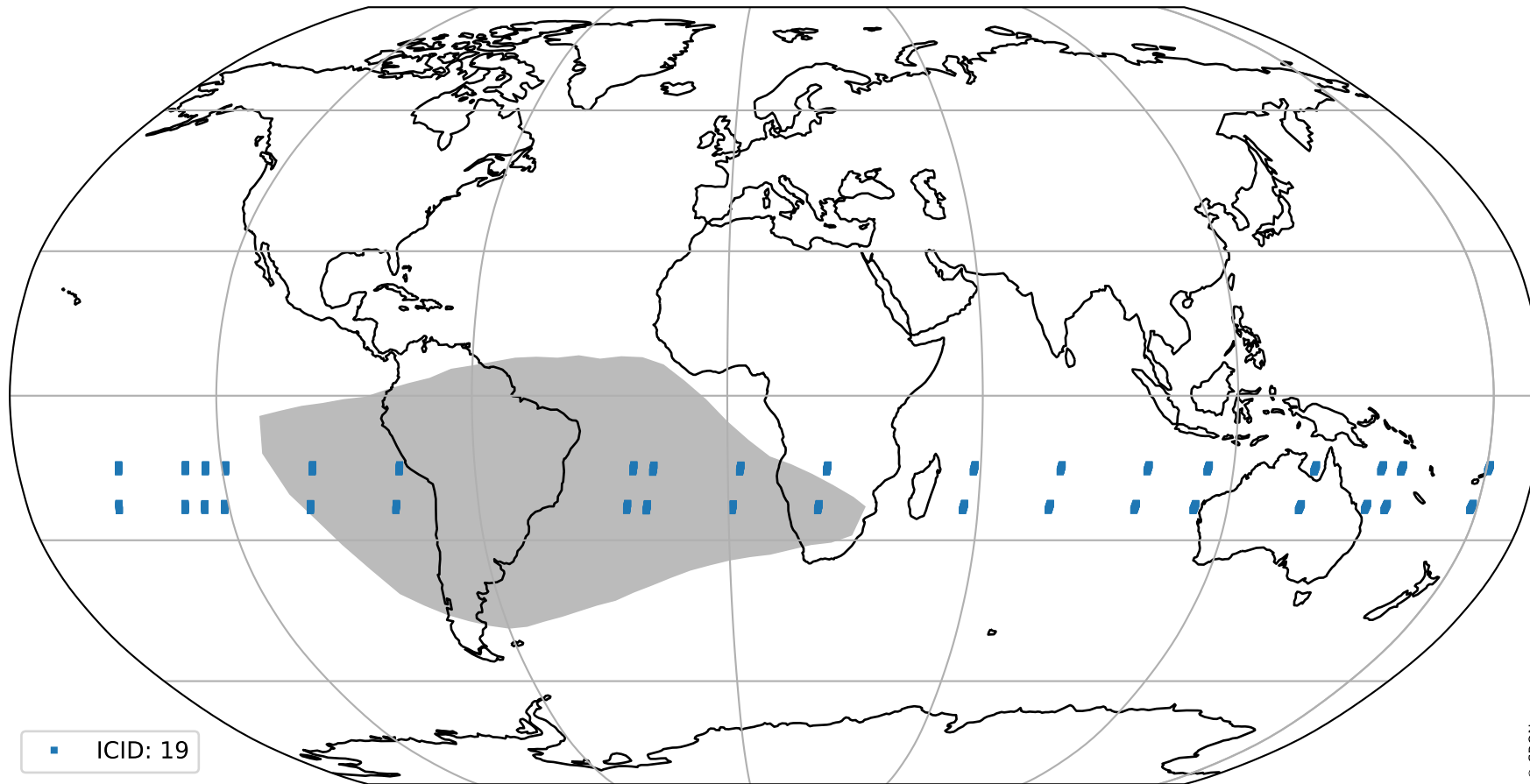
orbits : 18 in [19027, 19072]  
coverage : 2021-06-15 / 2021-06-18  
created : 2023-08-22T08:22:55

## Histograms of pixel-quality



# Tropomi SWIR pixel quality (official) ground-tracks of Sentinel-5P

orbits : 18 in [19027, 19072]  
coverage : 2021-06-15 / 2021-06-18  
created : 2023-08-22T08:22:55



# Tropomi SWIR pixel quality (official)

orbits : [2827, 19072]  
coverage : 2018-04-30 / 2021-06-18  
created : 2023-08-22T08:22:55

## trend of pixel quality & temperatures

