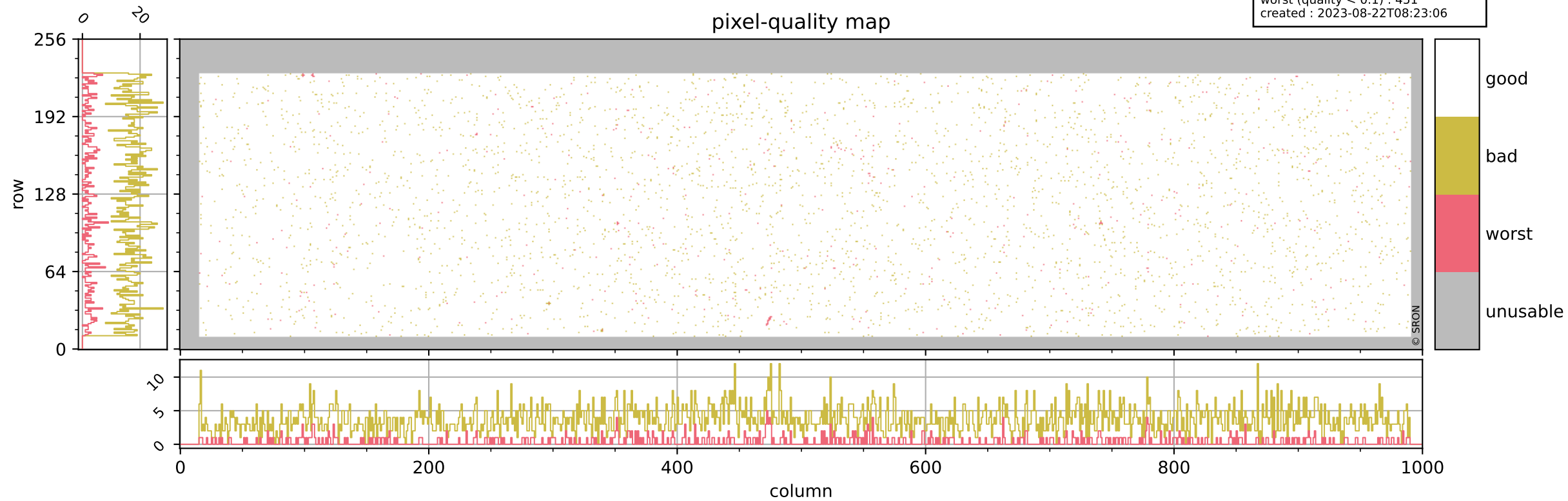


Tropomi SWIR pixel quality (official)

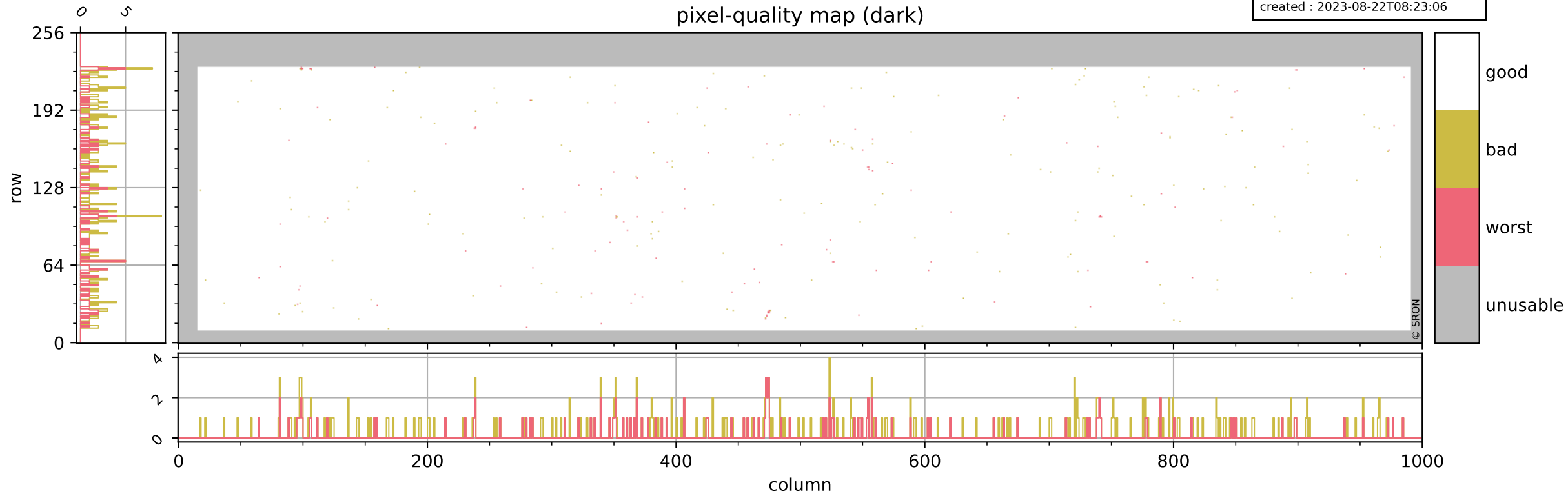
orbits : 19 in [19102, 19147]
coverage : 2021-06-20 / 2021-06-23
bad (quality < 0.8) : 3702
worst (quality < 0.1) : 451
created : 2023-08-22T08:23:06



Tropomi SWIR pixel quality (official)

orbits : 19 in [19102, 19147]
coverage : 2021-06-20 / 2021-06-23
bad (quality < 0.8) : 295
worst (quality < 0.1) : 116
created : 2023-08-22T08:23:06

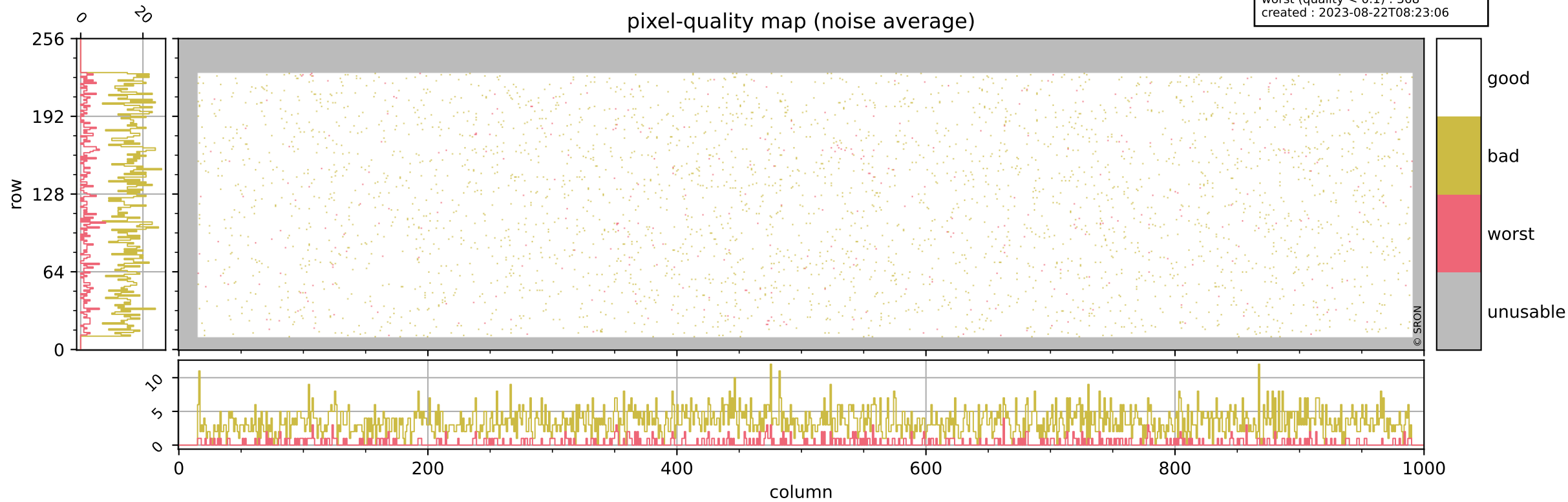
pixel-quality map (dark)



Tropomi SWIR pixel quality (official)

orbits : 19 in [19102, 19147]
coverage : 2021-06-20 / 2021-06-23
bad (quality < 0.8) : 3442
worst (quality < 0.1) : 368
created : 2023-08-22T08:23:06

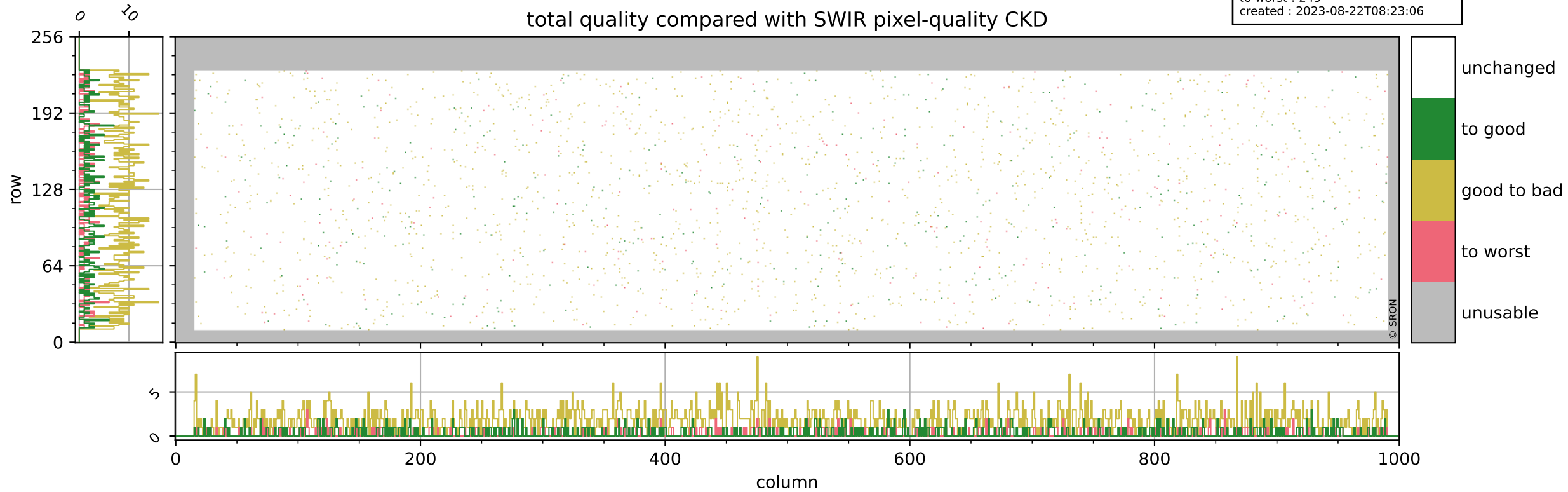
pixel-quality map (noise average)



Tropomi SWIR pixel quality (official)

orbits : 19 in [19102, 19147]
coverage : 2021-06-20 / 2021-06-23
to good : 377
good to bad : 1586
to worst : 245
created : 2023-08-22T08:23:06

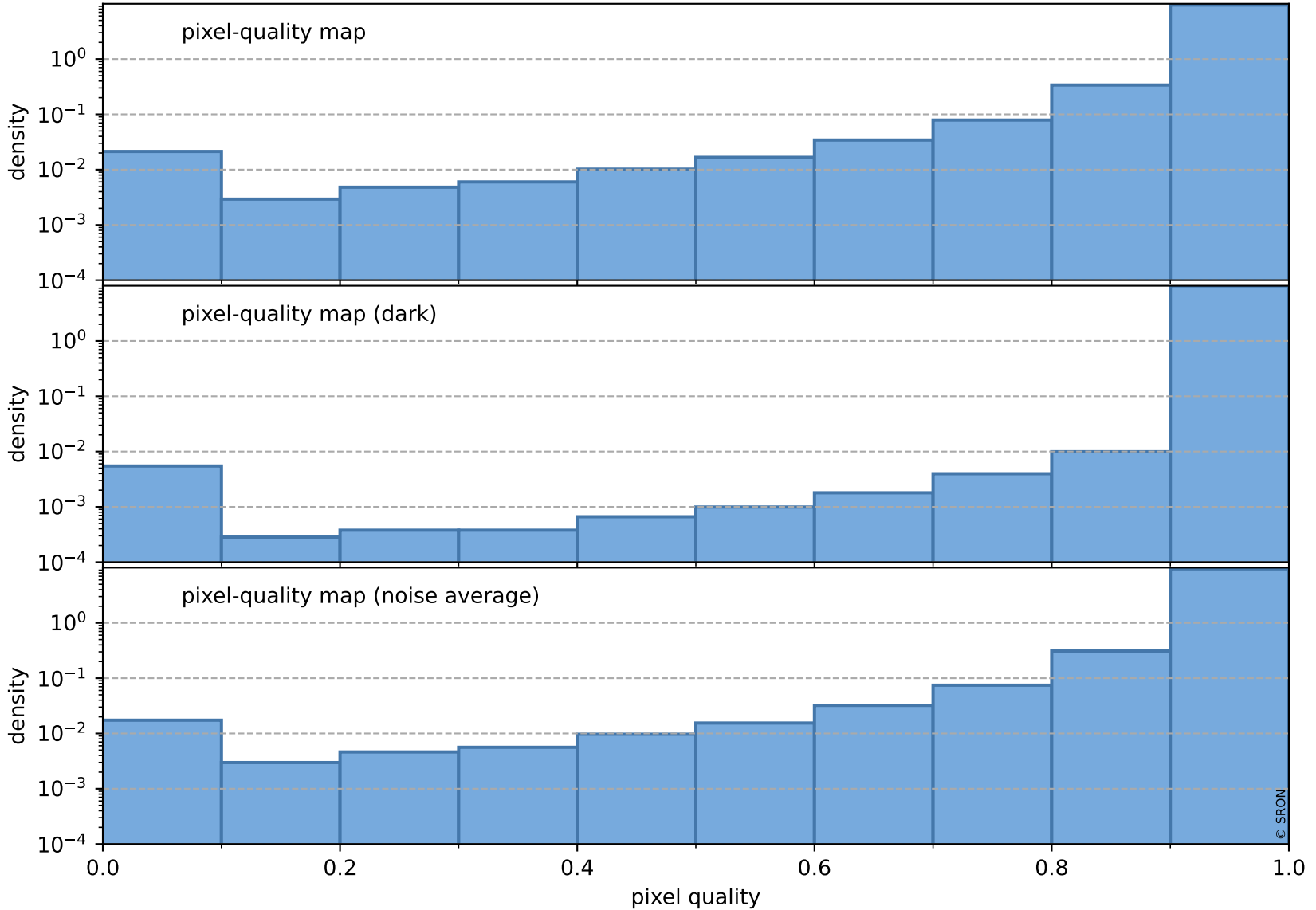
total quality compared with SWIR pixel-quality CKD



Tropomi SWIR pixel quality (official)

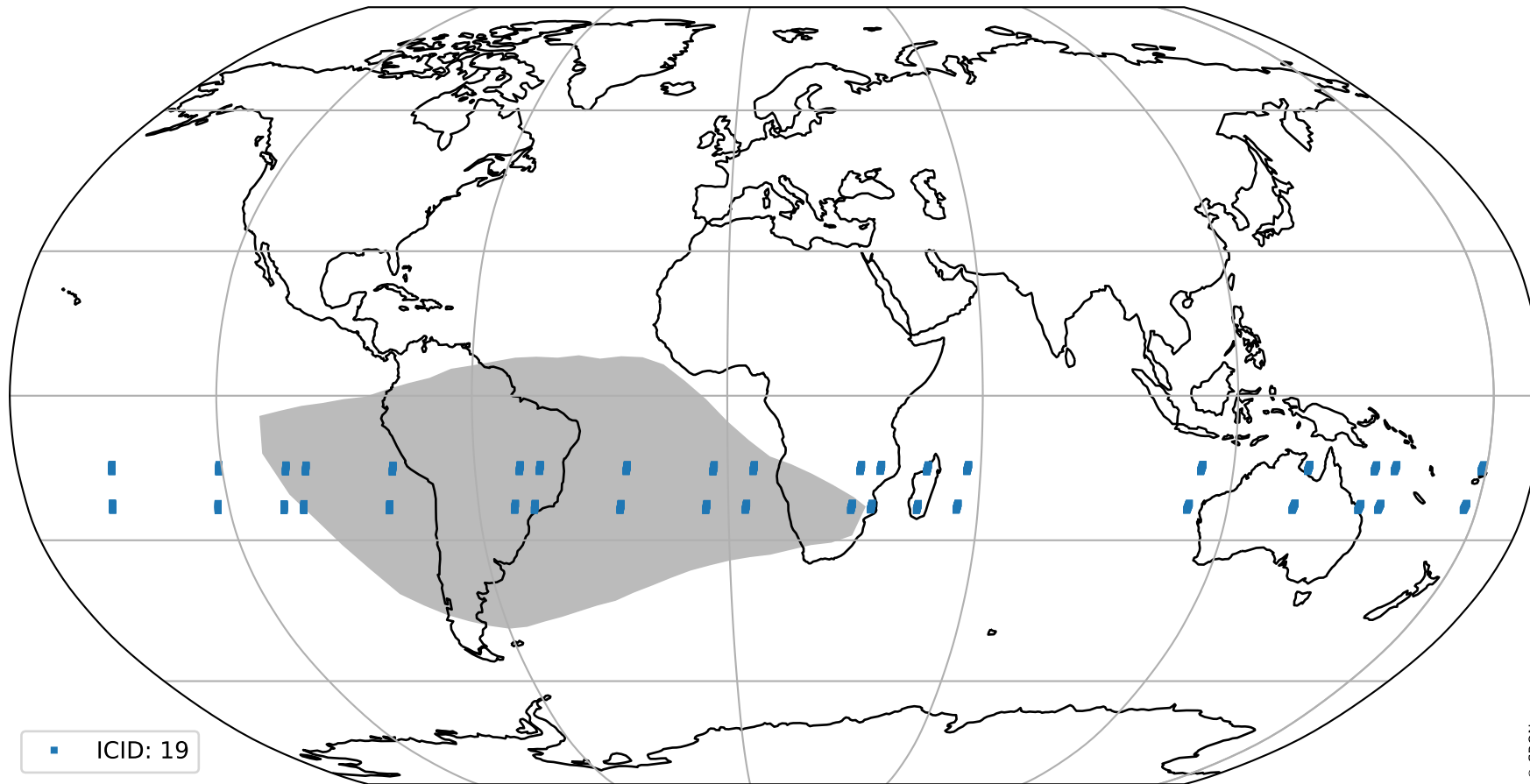
orbits : 19 in [19102, 19147]
coverage : 2021-06-20 / 2021-06-23
created : 2023-08-22T08:23:07

Histograms of pixel-quality



Tropomi SWIR pixel quality (official) ground-tracks of Sentinel-5P

orbits : 19 in [19102, 19147]
coverage : 2021-06-20 / 2021-06-23
created : 2023-08-22T08:23:07



Tropomi SWIR pixel quality (official)

orbits : [2827, 19147]
coverage : 2018-04-30 / 2021-06-23
created : 2023-08-22T08:23:07

trend of pixel quality & temperatures

