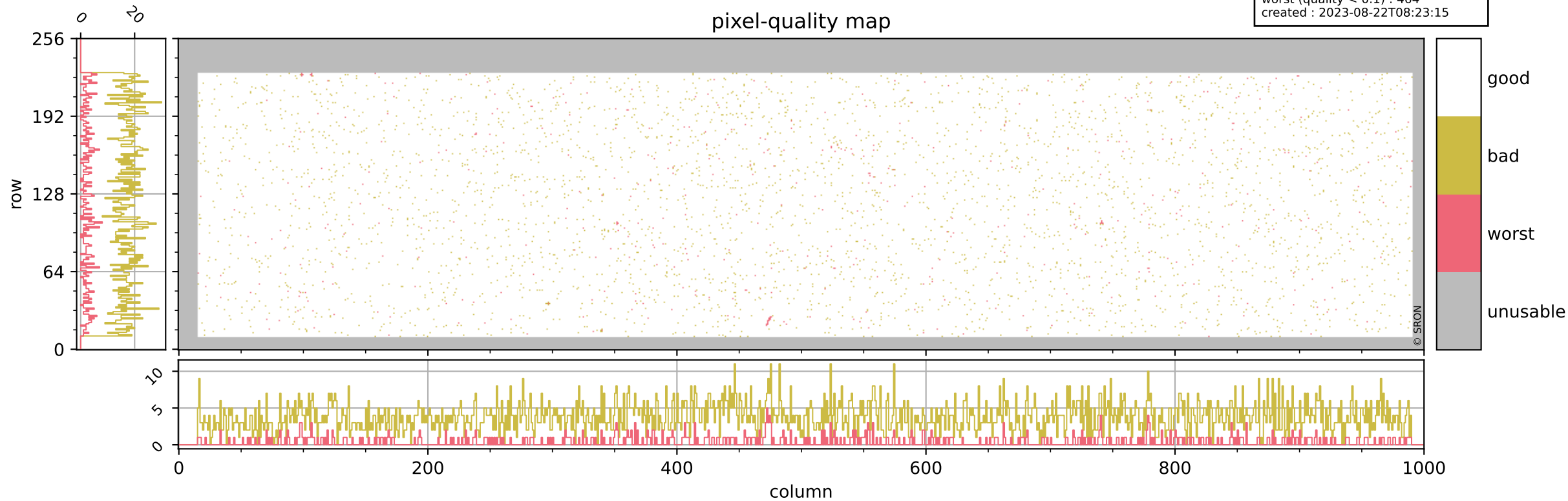


# Tropomi SWIR pixel quality (official)

orbits : 20 in [19162, 19207]  
coverage : 2021-06-25 / 2021-06-28  
bad (quality < 0.8) : 3783  
worst (quality < 0.1) : 464  
created : 2023-08-22T08:23:15

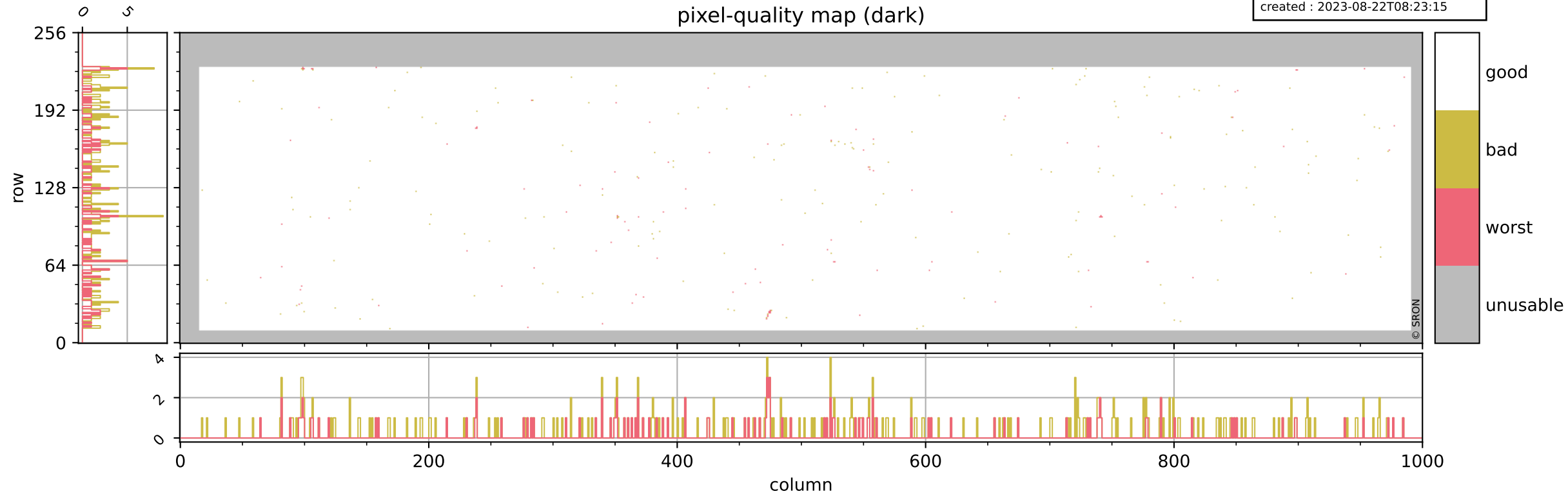
## pixel-quality map



# Tropomi SWIR pixel quality (official)

orbits : 20 in [19162, 19207]  
coverage : 2021-06-25 / 2021-06-28  
bad (quality < 0.8) : 298  
worst (quality < 0.1) : 113  
created : 2023-08-22T08:23:15

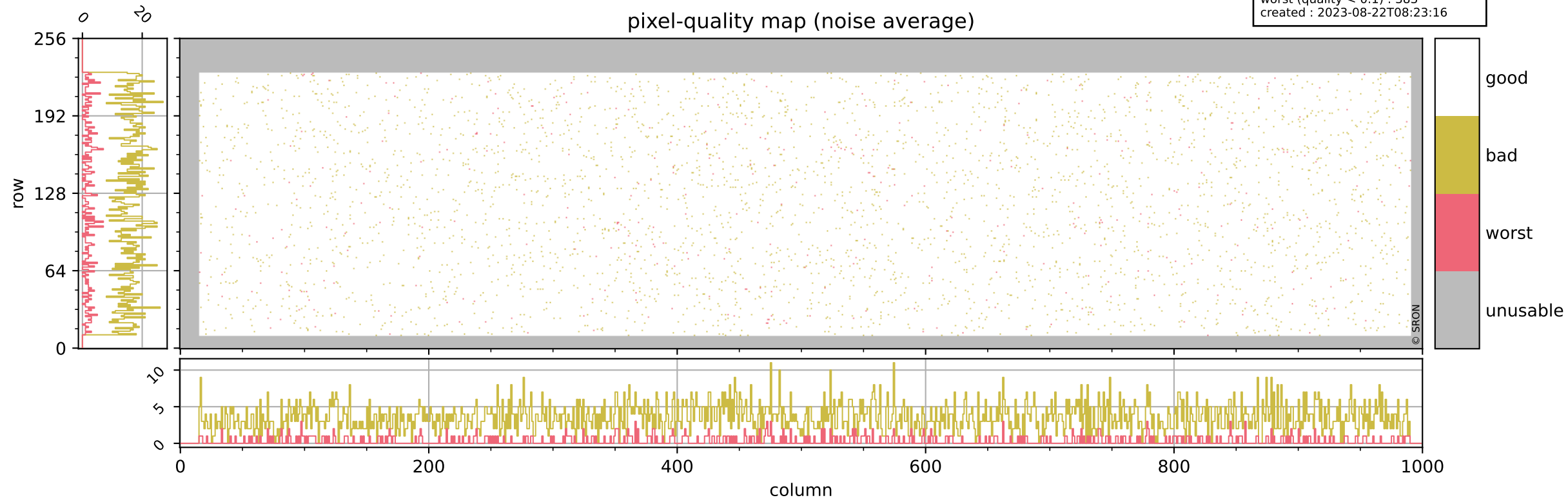
## pixel-quality map (dark)



# Tropomi SWIR pixel quality (official)

orbits : 20 in [19162, 19207]  
coverage : 2021-06-25 / 2021-06-28  
bad (quality < 0.8) : 3520  
worst (quality < 0.1) : 383  
created : 2023-08-22T08:23:16

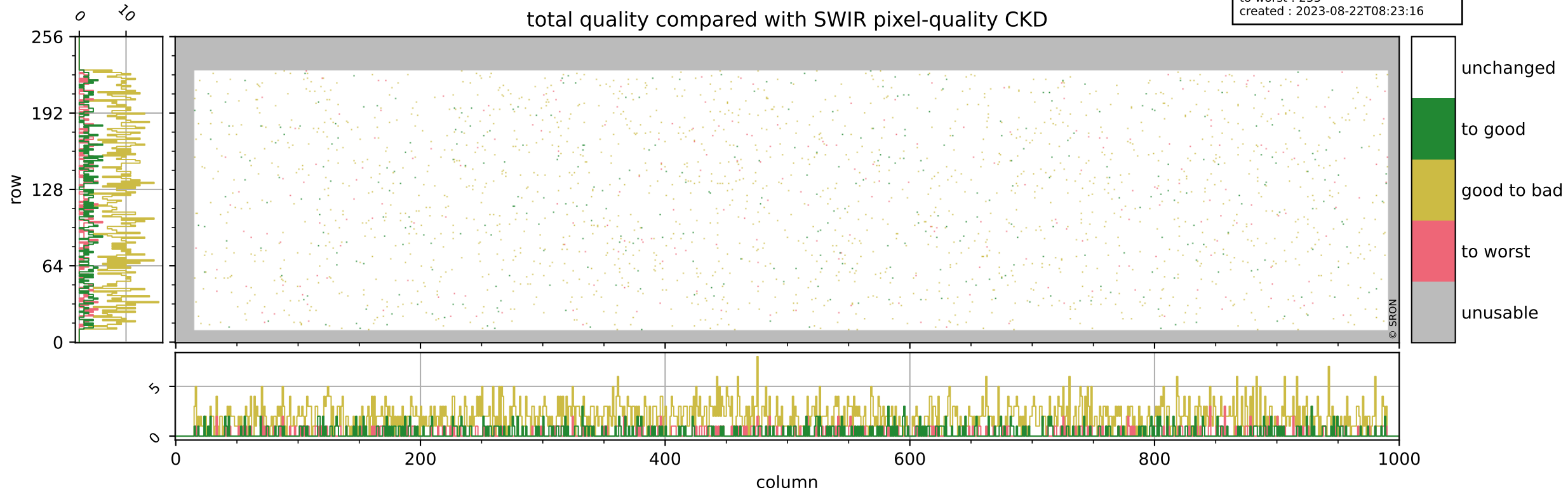
## pixel-quality map (noise average)



# Tropomi SWIR pixel quality (official)

orbits : 20 in [19162, 19207]  
coverage : 2021-06-25 / 2021-06-28  
to good : 370  
good to bad : 1651  
to worst : 255  
created : 2023-08-22T08:23:16

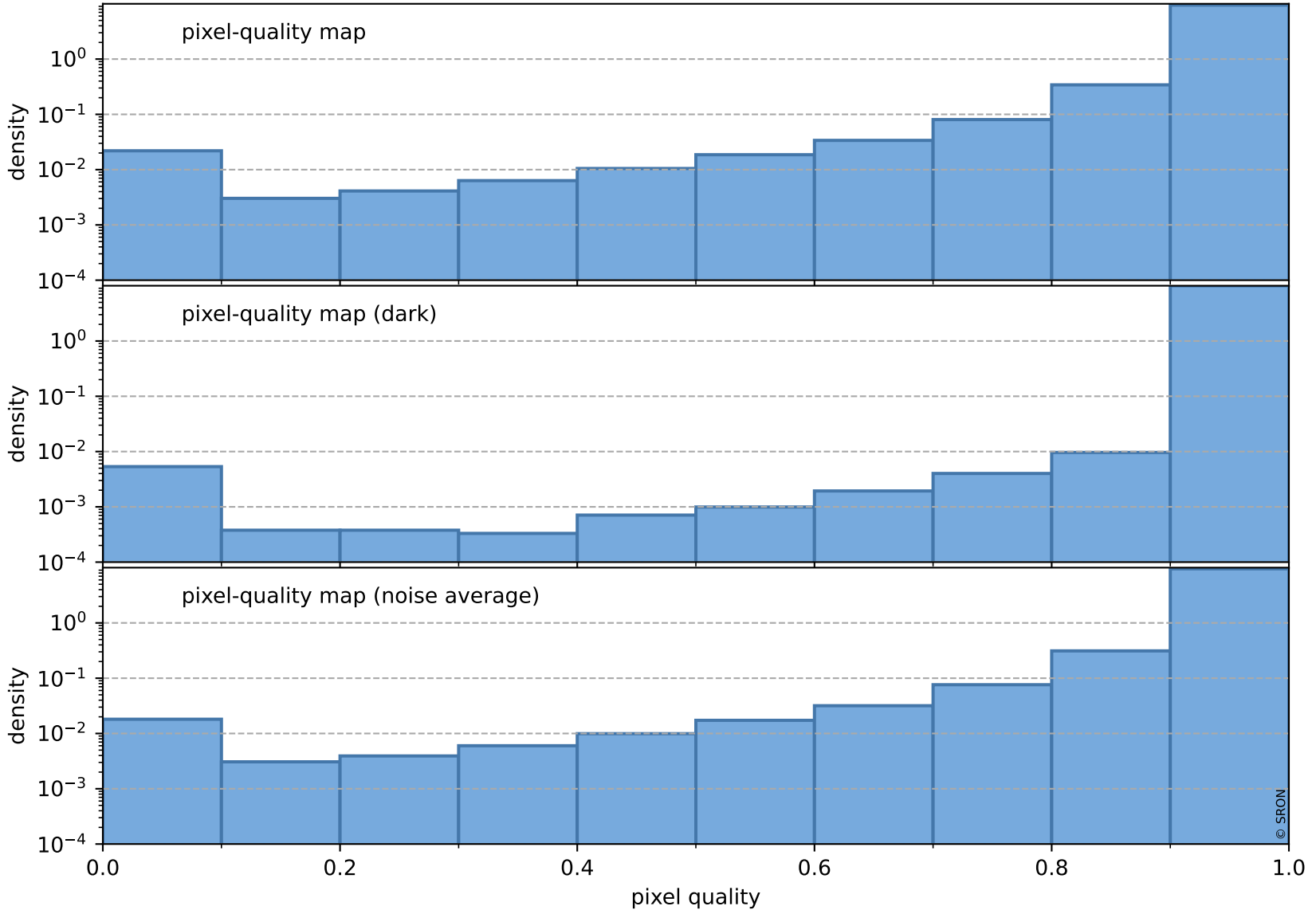
## total quality compared with SWIR pixel-quality CKD



# Tropomi SWIR pixel quality (official)

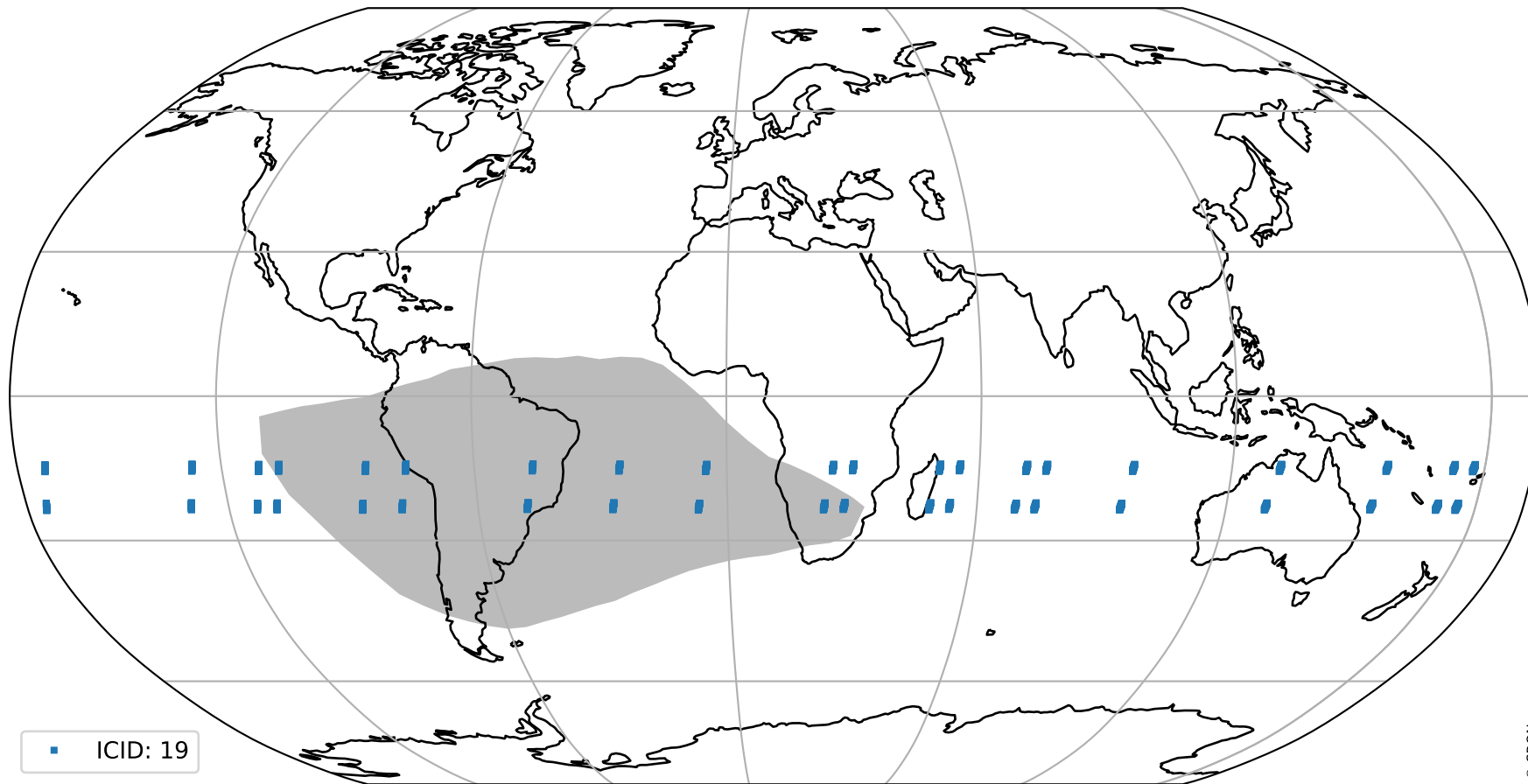
orbits : 20 in [19162, 19207]  
coverage : 2021-06-25 / 2021-06-28  
created : 2023-08-22T08:23:16

## Histograms of pixel-quality



# Tropomi SWIR pixel quality (official) ground-tracks of Sentinel-5P

orbits : 20 in [19162, 19207]  
coverage : 2021-06-25 / 2021-06-28  
created : 2023-08-22T08:23:17



# Tropomi SWIR pixel quality (official)

orbits : [2827, 19207]  
coverage : 2018-04-30 / 2021-06-28  
created : 2023-08-22T08:23:17

## trend of pixel quality & temperatures

