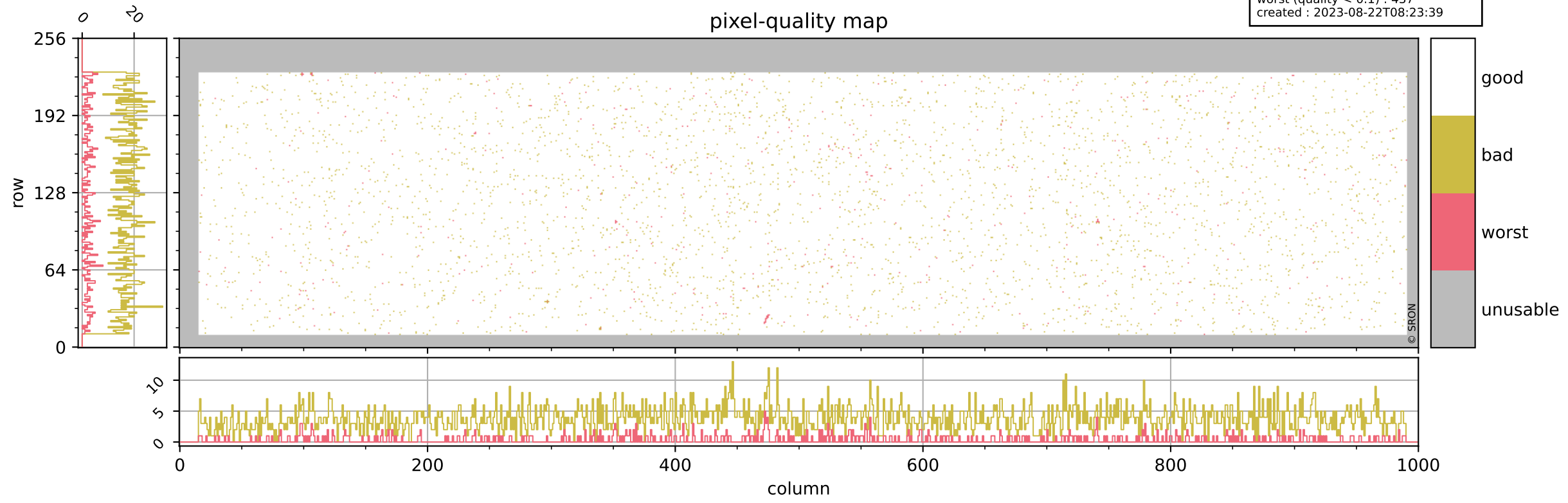


# Tropomi SWIR pixel quality (official)

orbits : 20 in [19312, 19357]  
coverage : 2021-07-05 / 2021-07-08  
bad (quality < 0.8) : 3773  
worst (quality < 0.1) : 437  
created : 2023-08-22T08:23:39

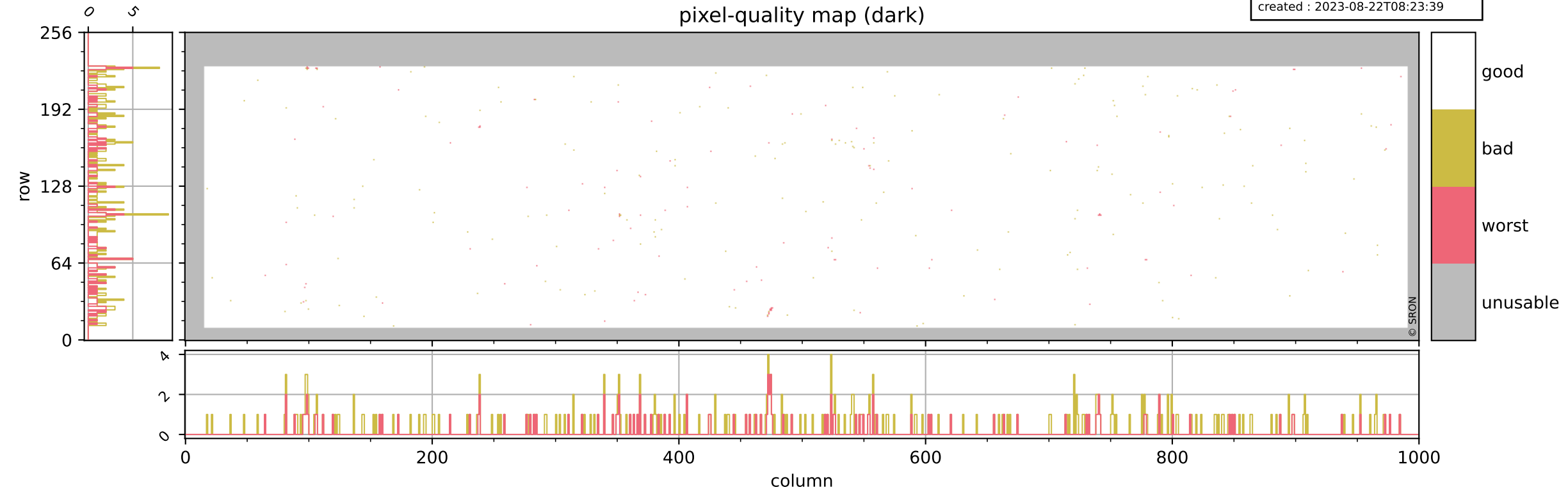
## pixel-quality map



# Tropomi SWIR pixel quality (official)

orbits : 20 in [19312, 19357]  
coverage : 2021-07-05 / 2021-07-08  
bad (quality < 0.8) : 292  
worst (quality < 0.1) : 114  
created : 2023-08-22T08:23:39

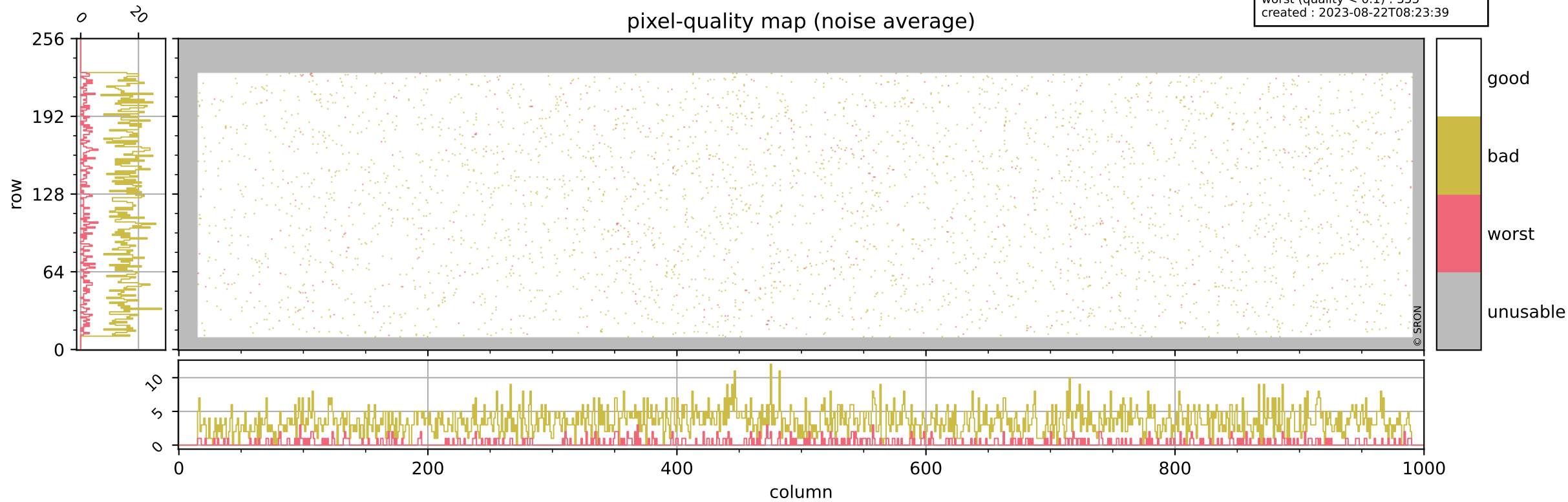
## pixel-quality map (dark)



# Tropomi SWIR pixel quality (official)

orbits : 20 in [19312, 19357]  
coverage : 2021-07-05 / 2021-07-08  
bad (quality < 0.8) : 3525  
worst (quality < 0.1) : 355  
created : 2023-08-22T08:23:39

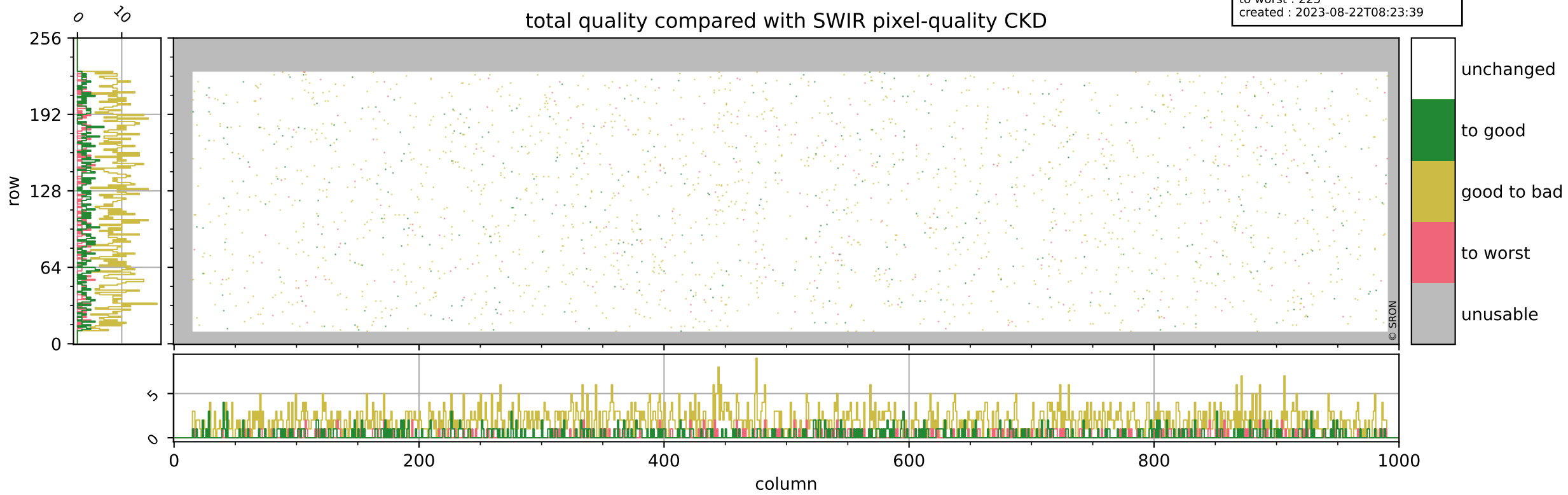
## pixel-quality map (noise average)



# Tropomi SWIR pixel quality (official)

orbits : 20 in [19312, 19357]  
coverage : 2021-07-05 / 2021-07-08  
to good : 367  
good to bad : 1660  
to worst : 225  
created : 2023-08-22T08:23:39

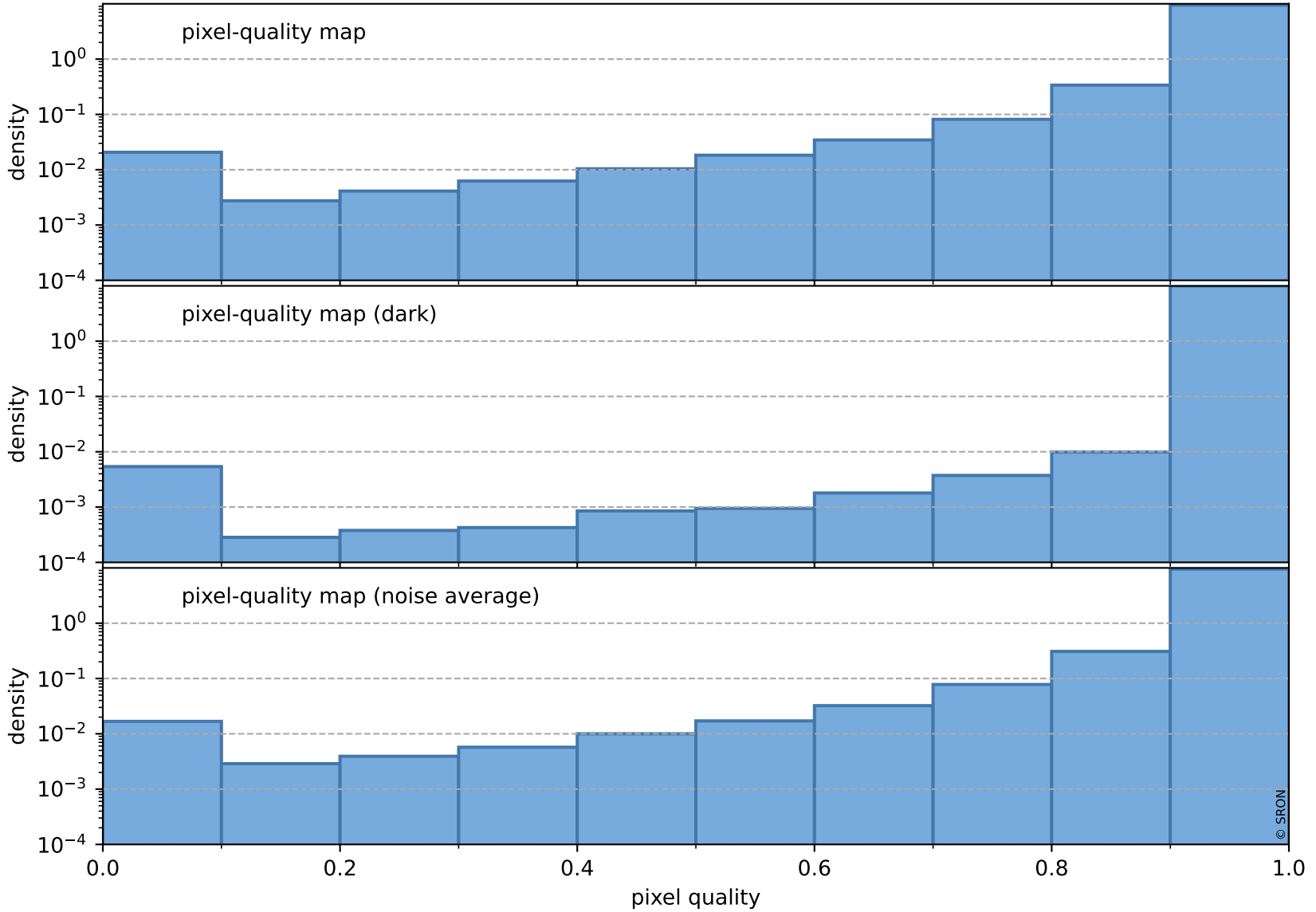
## total quality compared with SWIR pixel-quality CKD



# Tropomi SWIR pixel quality (official)

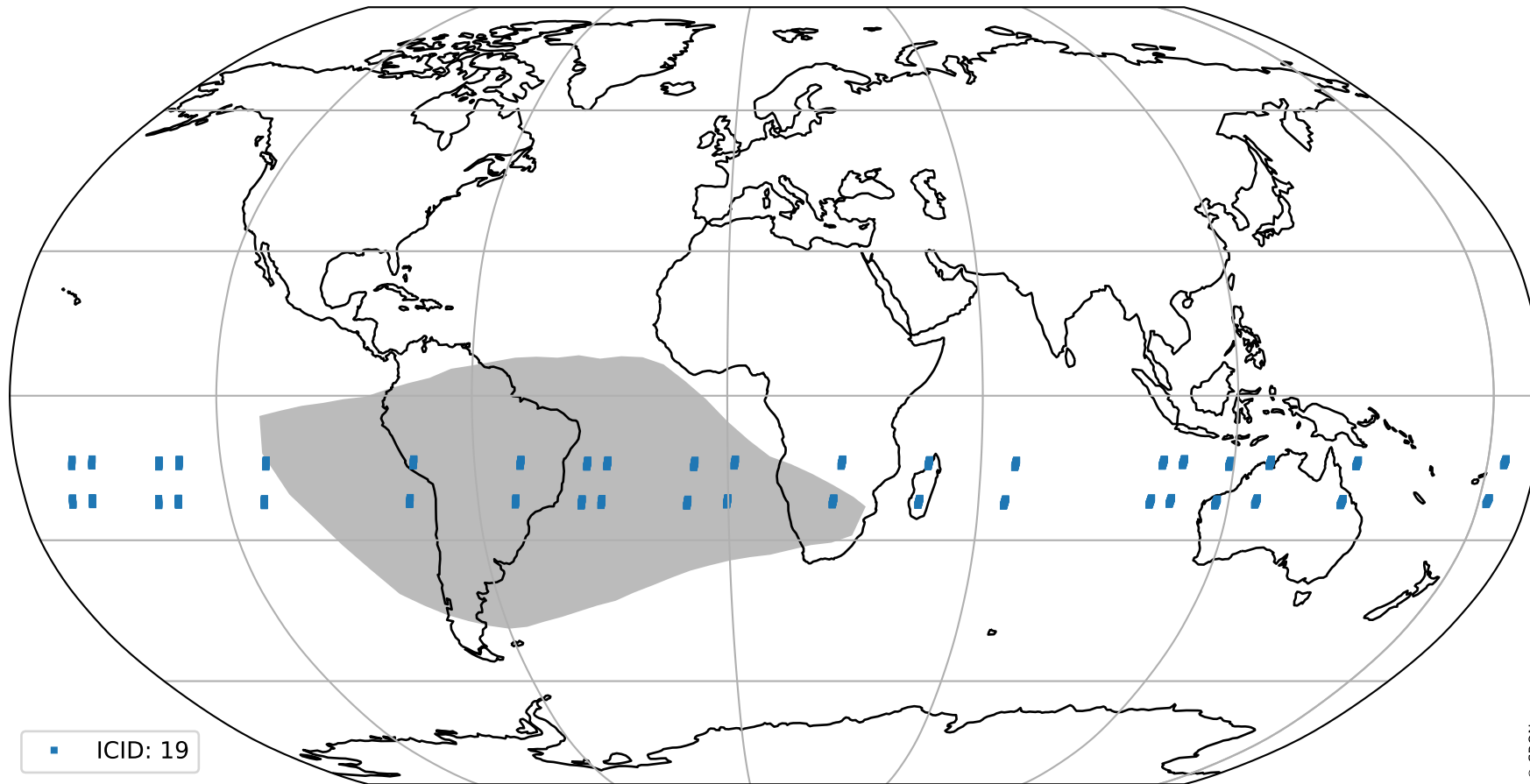
orbits : 20 in [19312, 19357]  
coverage : 2021-07-05 / 2021-07-08  
created : 2023-08-22T08:23:40

## Histograms of pixel-quality



# Tropomi SWIR pixel quality (official) ground-tracks of Sentinel-5P

orbits : 20 in [19312, 19357]  
coverage : 2021-07-05 / 2021-07-08  
created : 2023-08-22T08:23:40



# Tropomi SWIR pixel quality (official)

orbits : [2827, 19357]  
coverage : 2018-04-30 / 2021-07-08  
created : 2023-08-22T08:23:40

## trend of pixel quality & temperatures

