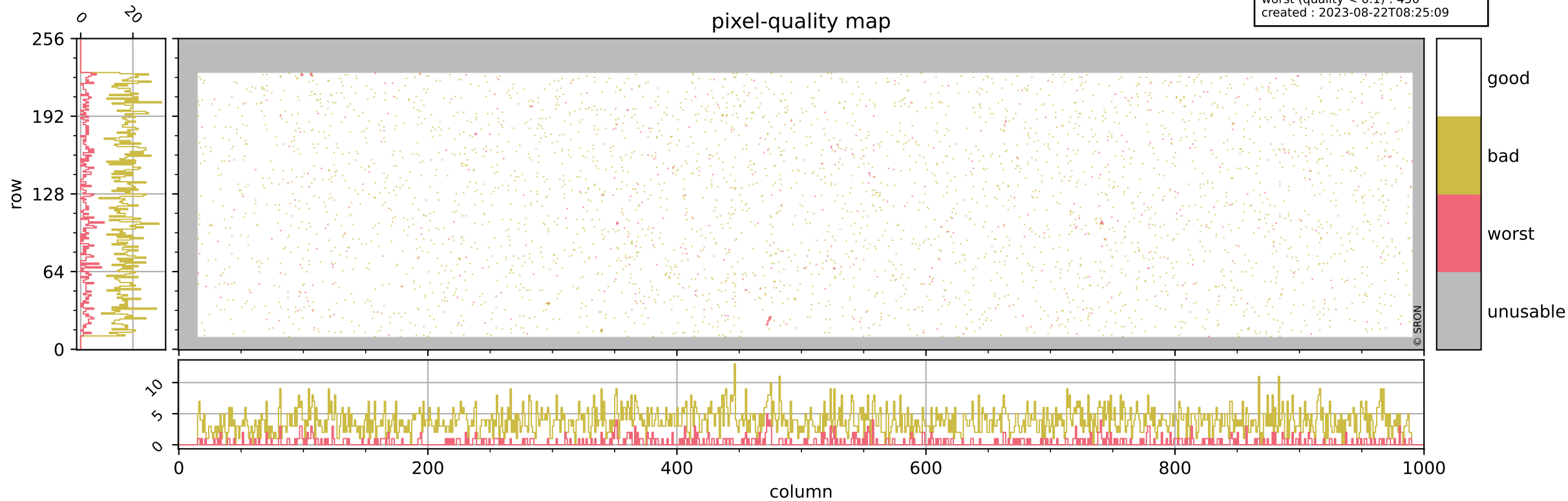


# Tropomi SWIR pixel quality (official)

orbits : 20 in [19882, 19927]  
coverage : 2021-08-14 / 2021-08-17  
bad (quality < 0.8) : 3819  
worst (quality < 0.1) : 450  
created : 2023-08-22T08:25:09

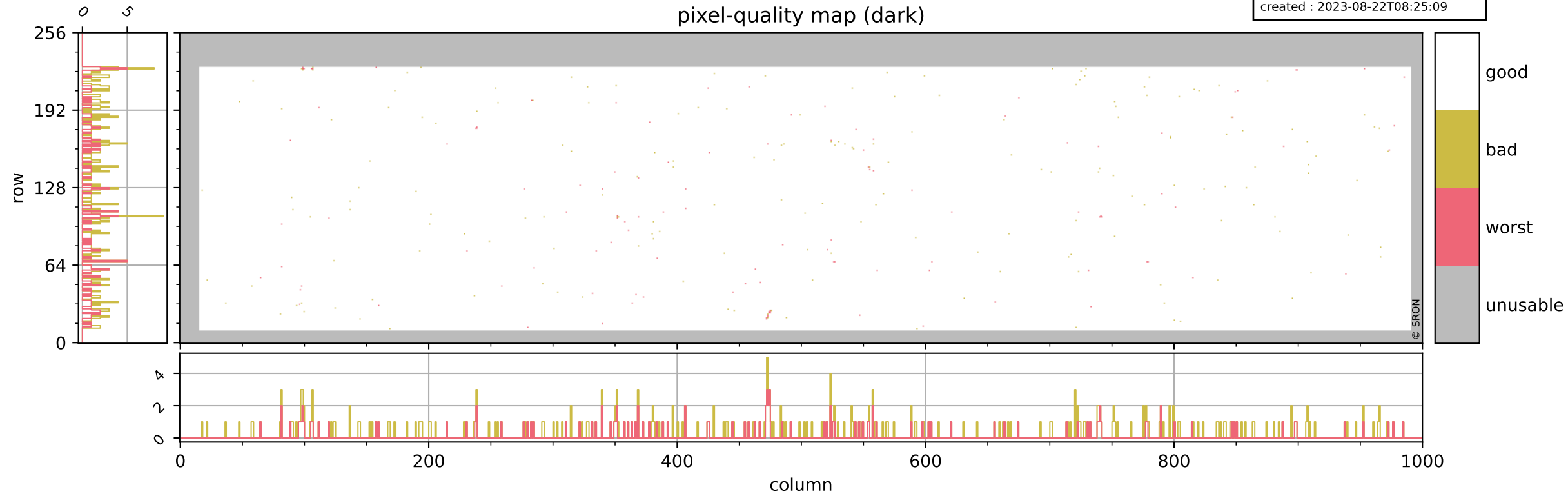
## pixel-quality map



# Tropomi SWIR pixel quality (official)

orbits : 20 in [19882, 19927]  
coverage : 2021-08-14 / 2021-08-17  
bad (quality < 0.8) : 301  
worst (quality < 0.1) : 117  
created : 2023-08-22T08:25:09

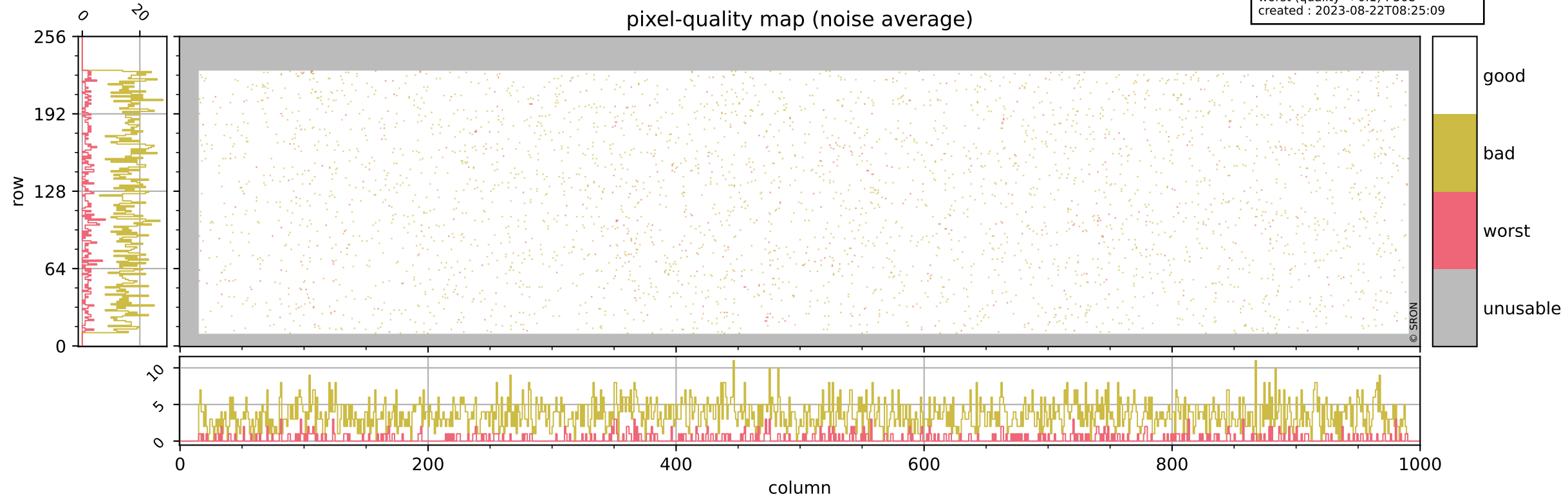
## pixel-quality map (dark)



# Tropomi SWIR pixel quality (official)

orbits : 20 in [19882, 19927]  
coverage : 2021-08-14 / 2021-08-17  
bad (quality < 0.8) : 3556  
worst (quality < 0.1) : 368  
created : 2023-08-22T08:25:09

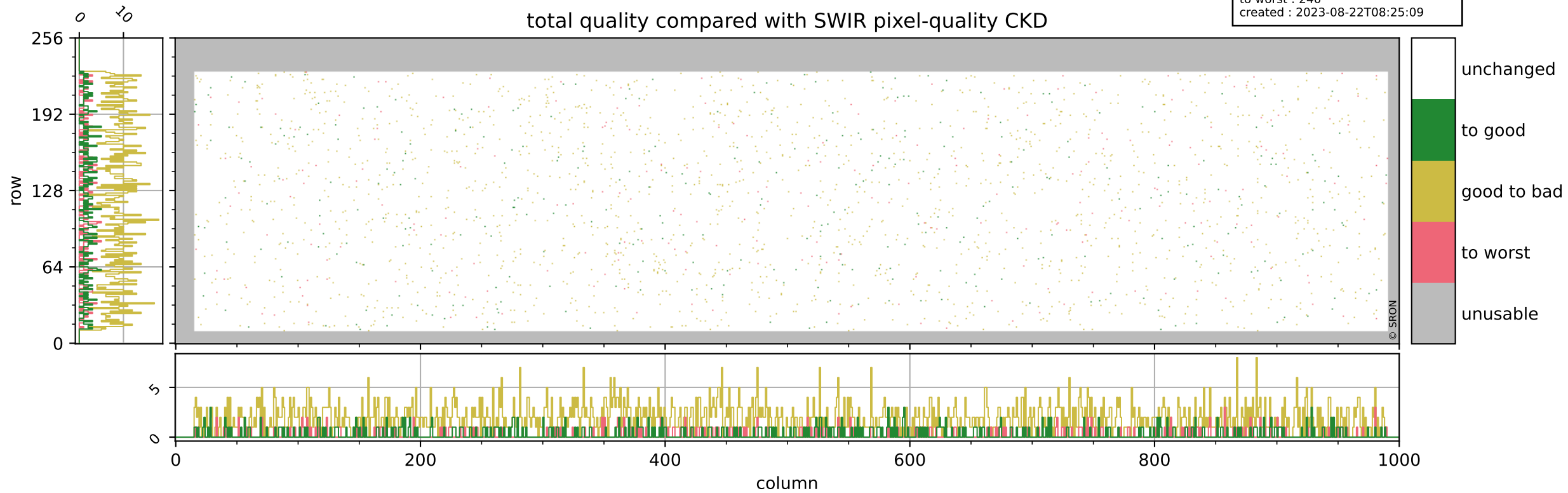
## pixel-quality map (noise average)



# Tropomi SWIR pixel quality (official)

orbits : 20 in [19882, 19927]  
coverage : 2021-08-14 / 2021-08-17  
to good : 345  
good to bad : 1676  
to worst : 240  
created : 2023-08-22T08:25:09

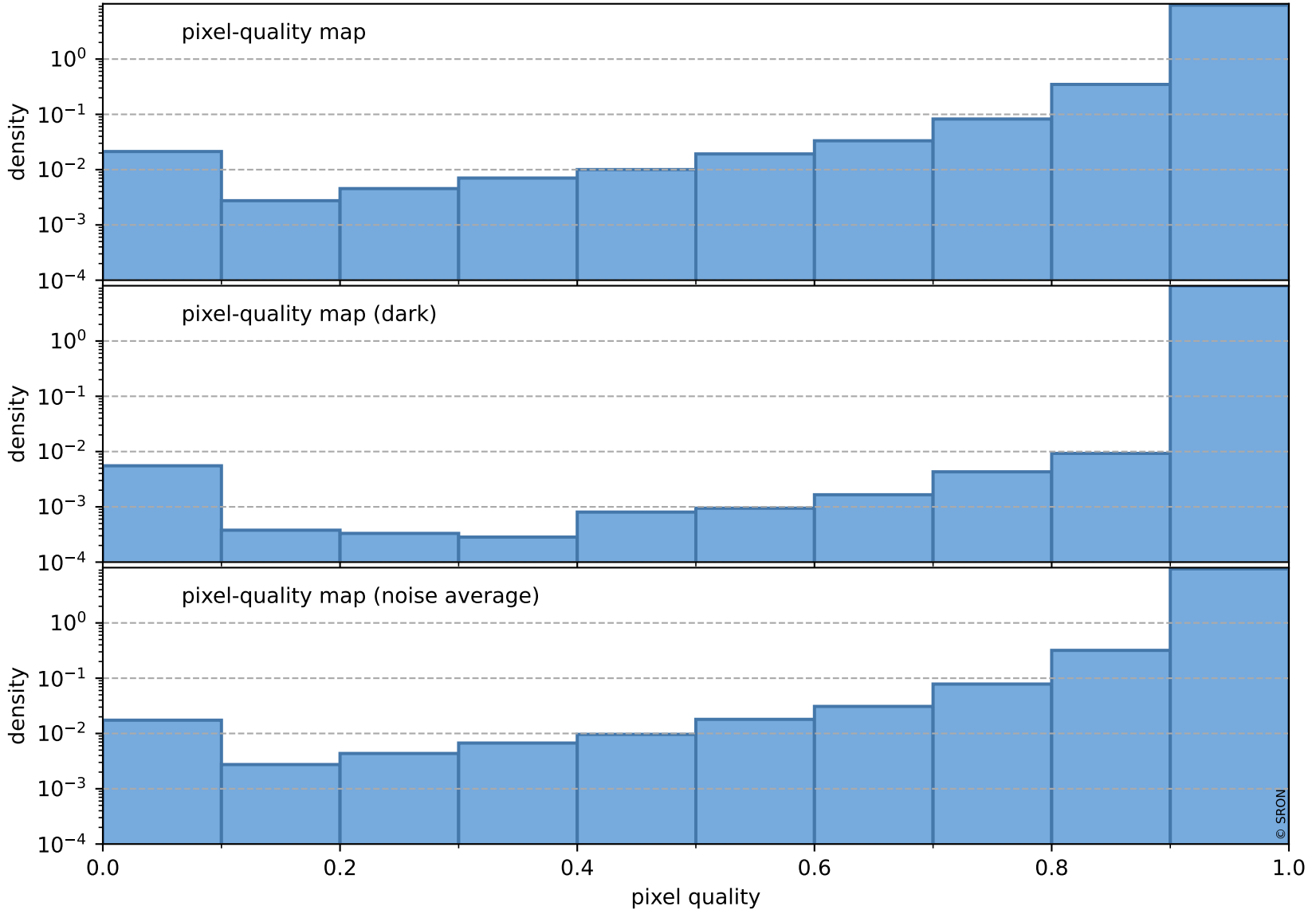
## total quality compared with SWIR pixel-quality CKD



# Tropomi SWIR pixel quality (official)

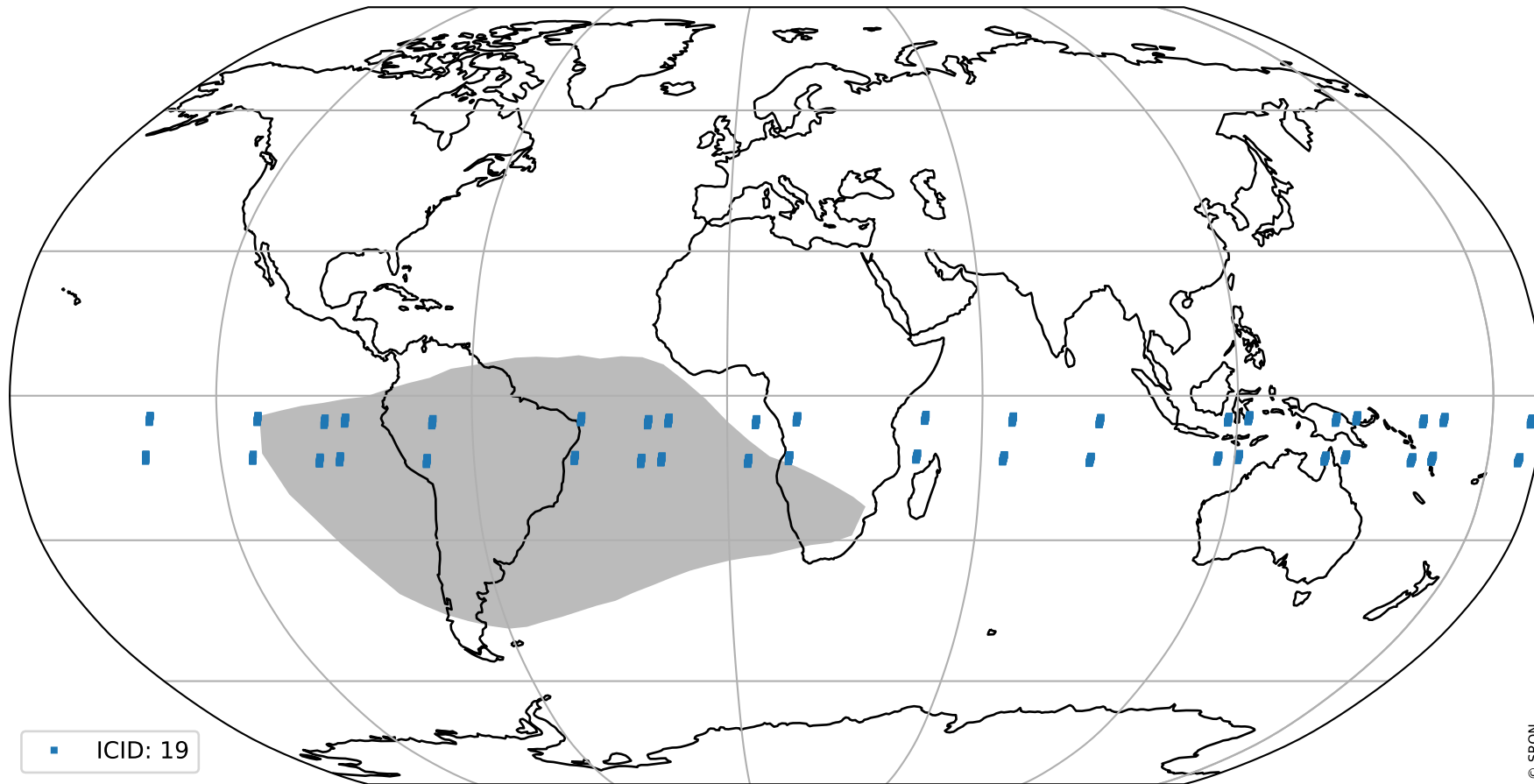
orbits : 20 in [19882, 19927]  
coverage : 2021-08-14 / 2021-08-17  
created : 2023-08-22T08:25:10

## Histograms of pixel-quality



# Tropomi SWIR pixel quality (official) ground-tracks of Sentinel-5P

orbits : 20 in [19882, 19927]  
coverage : 2021-08-14 / 2021-08-17  
created : 2023-08-22T08:25:10



# Tropomi SWIR pixel quality (official)

orbits : [2827, 19927]  
coverage : 2018-04-30 / 2021-08-17  
created : 2023-08-22T08:25:10

## trend of pixel quality & temperatures

